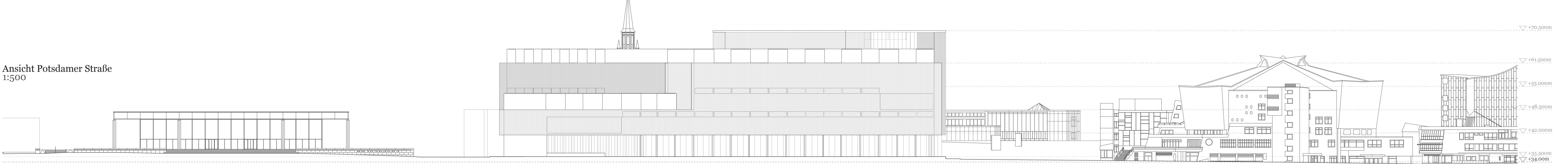
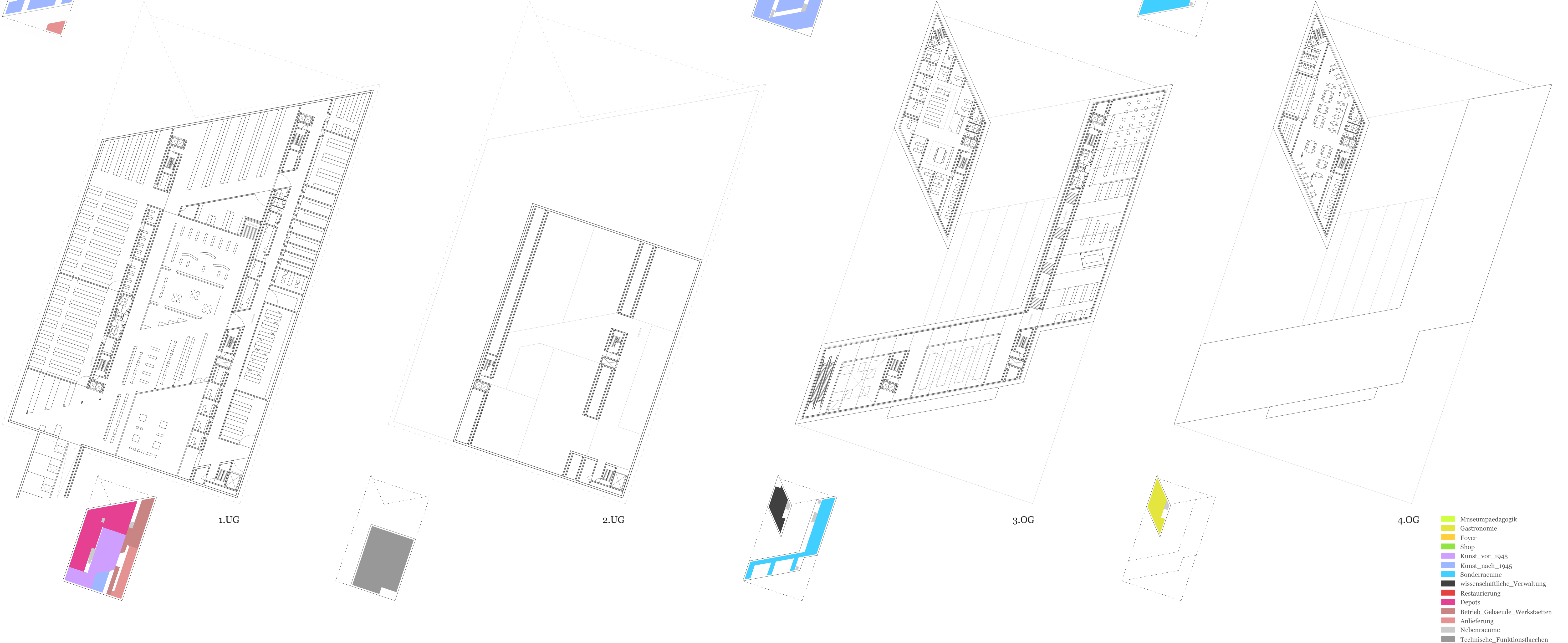
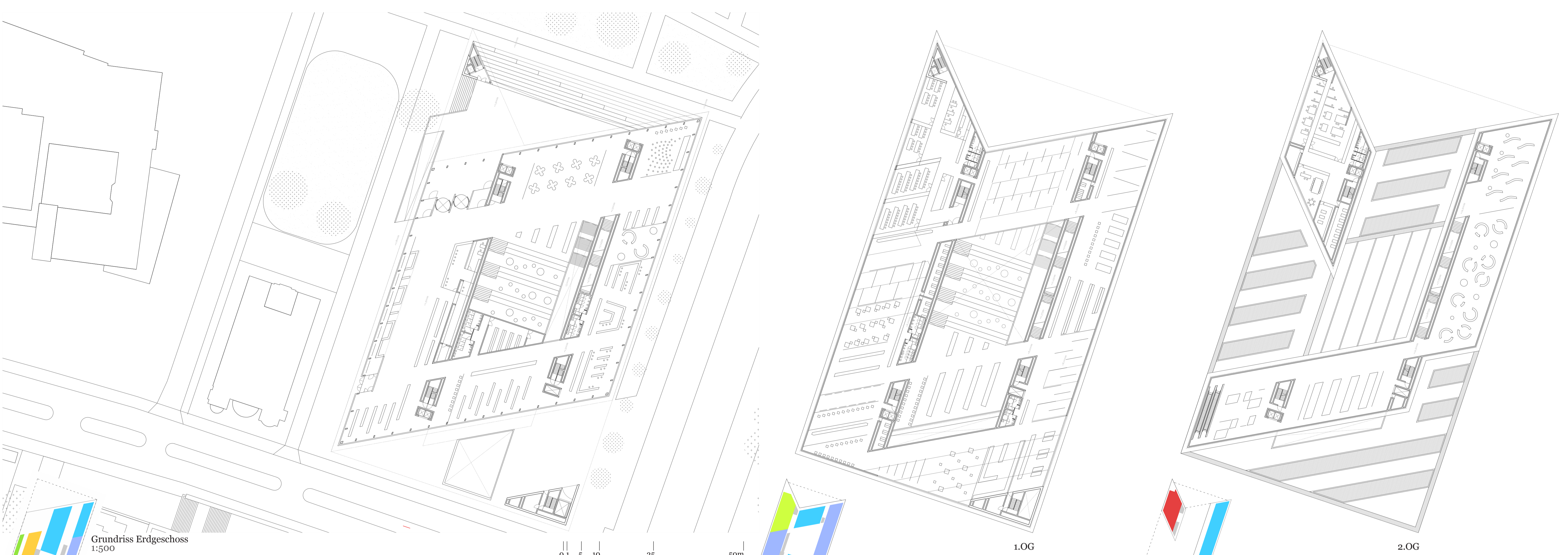
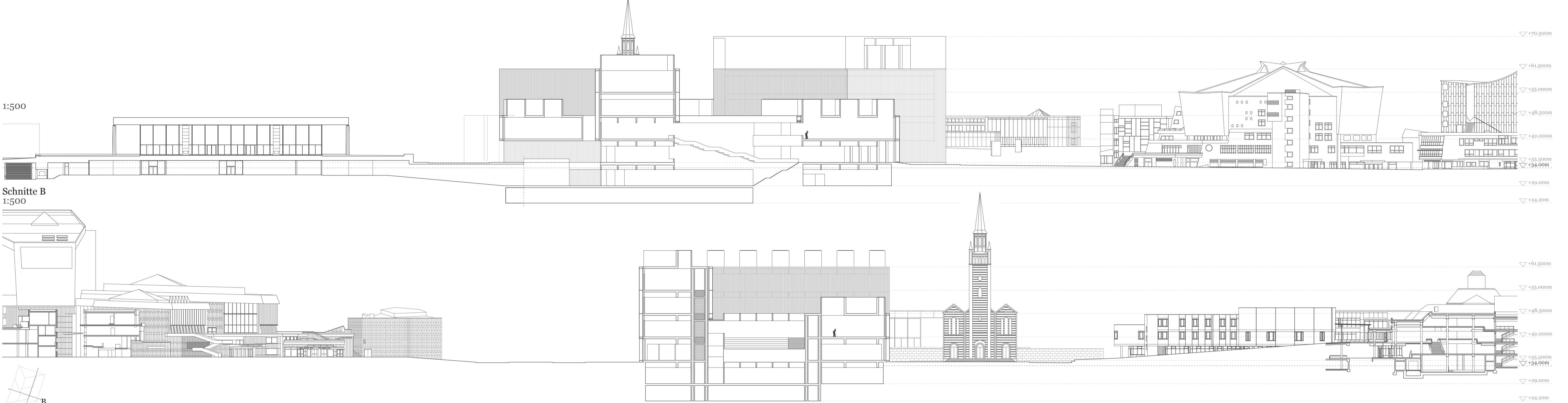
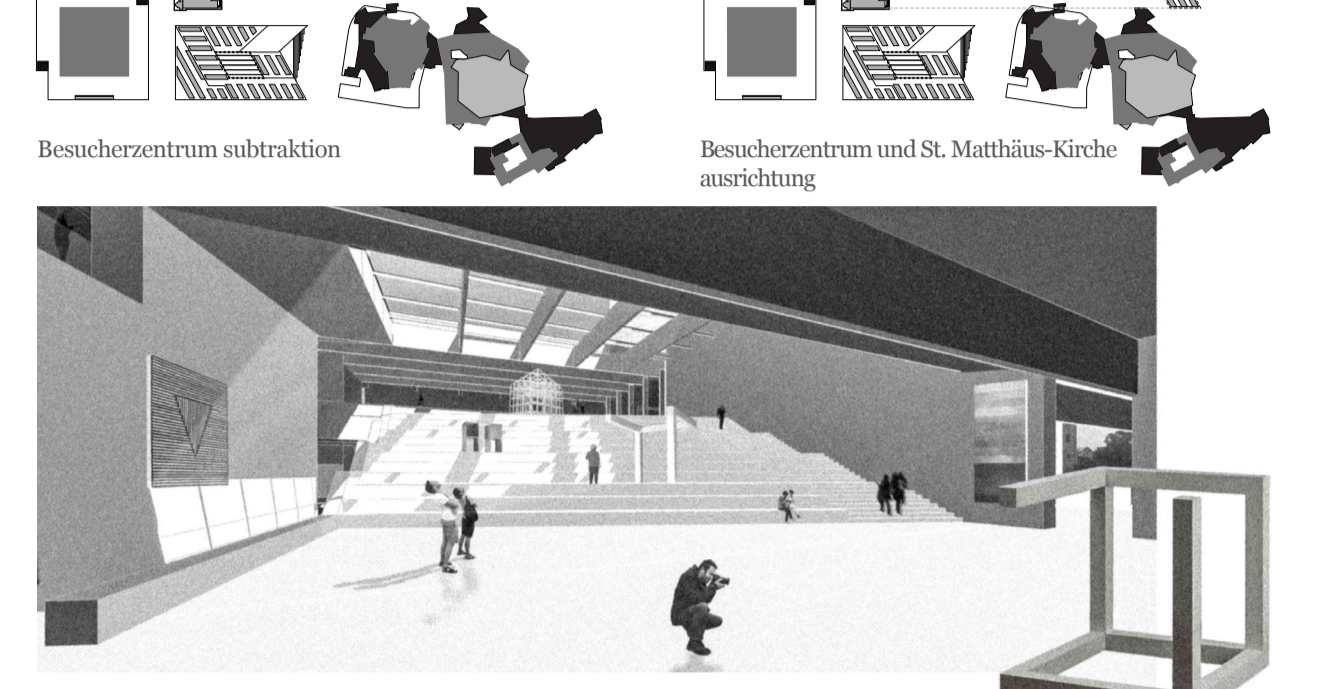
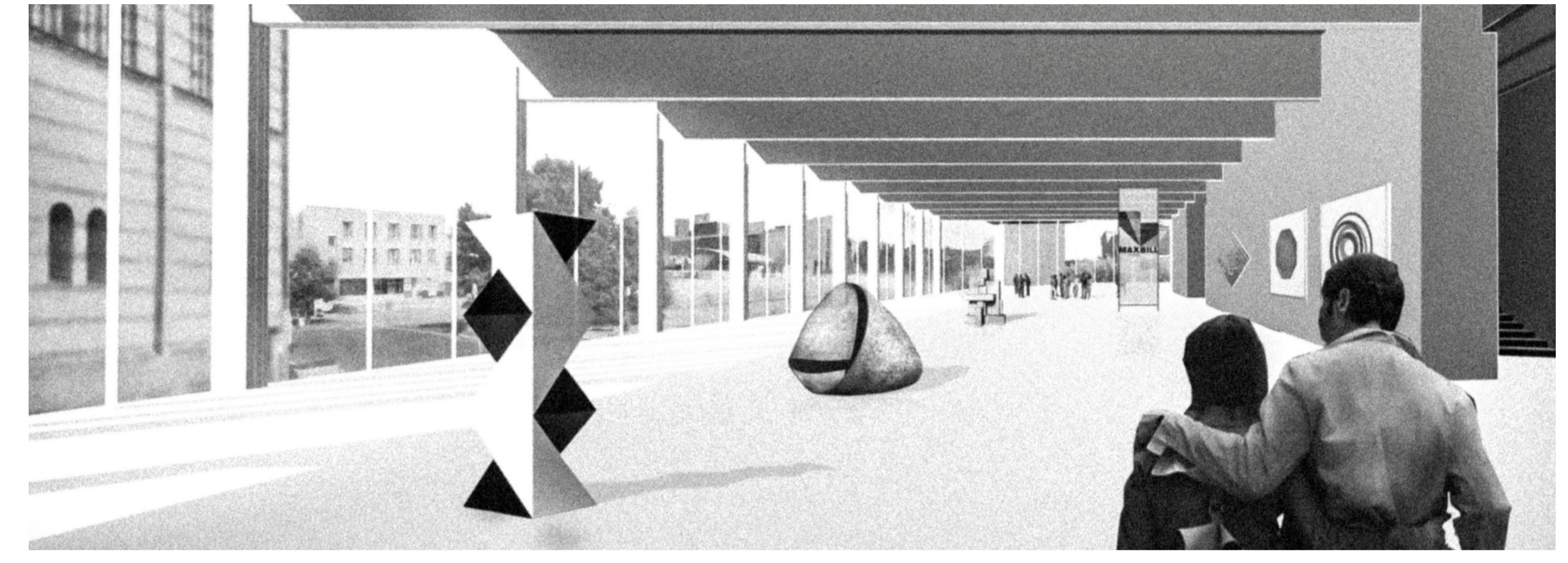
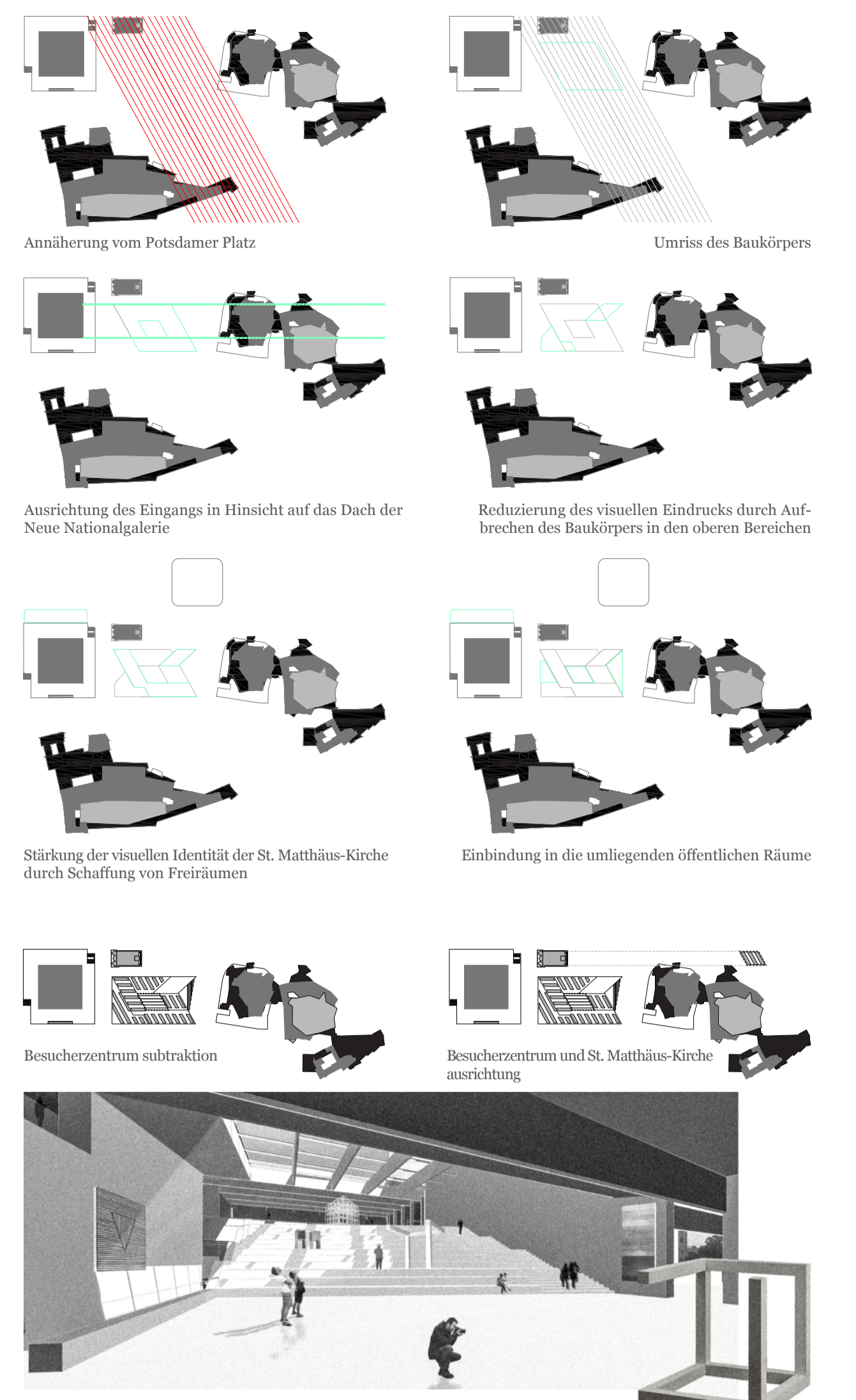
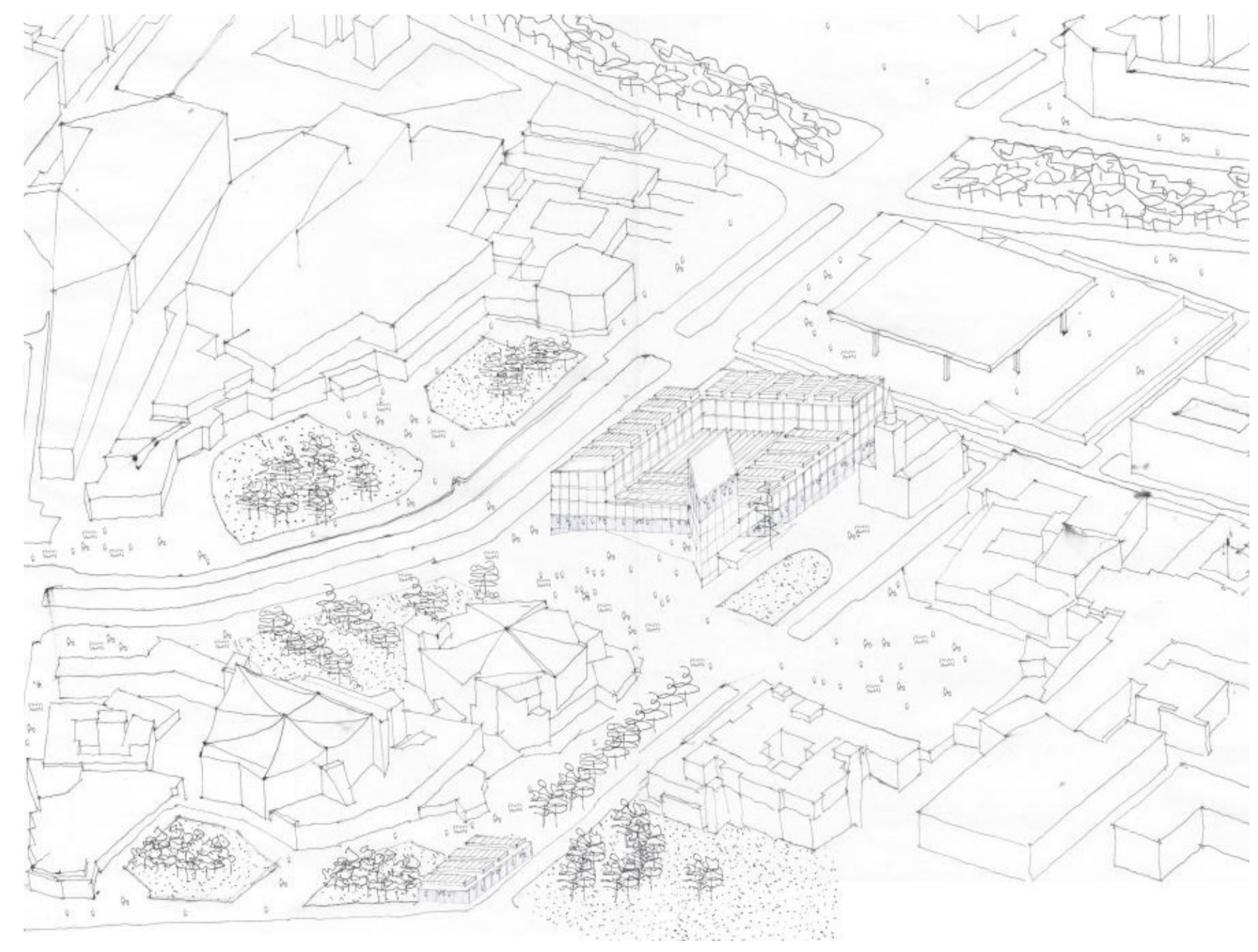


Das Museum des 20. Jahrhunderts

139139



Betrachtungsrahmen 1:2000
 ▶ Haupteingang ▶ Shop eingang, Restauranteingang ▶ Mitarbeiterbereich, Ablieferungseingang



- Museumpädagogik
- Gastronomie
- Popper
- Shop
- Kunst_vor_1945
- Kunst_nach_1945
- Sonderräume
- wissenschaftliche_Verwaltung
- Restaurierung
- Depots
- Betrieb_Gebäude_Workstätten
- Anlieferung
- Nebenräume
- Technische_Funktionsflächen