

Korean War **Memorial Park** for Civil Victims

International Competition Information

September 11, 2020

Contents

1. Competition Background		03
2. Competition Rules		
	2.1 Competition Title	08
	2.2 Objective	08
	2.3 Overview	08
	2.4 Competition Type	08
	2.5 Official Language and Measuring Unit	08
	2.6 Eligibility	08
	2.7 Schedule	09
	2.8 Registration	09
	2.9 Reference Materials	09
	2.10 Q&A	09
	2.11 Submission	10
	2.12 Anonymity	10
	2.13 Organizer	10
	2.14 Competition Management	10
	2.15 Technical Review	10
	2.16 Jury	11
	2.17 Evaluation	11
	2.18 Disqualification	12
	2.19 Awards	12
	2.20 Design Contract	13
	2.21 Copyrights	14
	2.22 Dispute	14
3. Site		
	3.1 Site Overview	16
	3.2 Urban Environment	16
	3.3 Natural Environment	17
4. Design Guidelines		
	4.1 Design Objective	21
	4.2 Design Considerations	21
	4.3 General Guidelines	22
	4.4 Program Guidelines	23
	4.5 Cost Estimate	27
5. Submittals		
	5.1 Submission Requirements	29
	5.2 Guidelines	31
	5.3 Evaluation Criteria	31
6. Appendix		
	6.1 List of Forms	34
	6.2 List of Reference Materials	34

1 Competition Background

1. Competition Background

The french philosopher Paul Ricoeur argues, history is about "TRUTH" whereas memory is about "FAITHFULNESS" to what ought to be remembered, what can be forgotten, what might be forgiven. Hence, with Rocoer's help we have to take in account that the function of the memorial, is above all, to raise historical consciousness. The right balance between remembering, forgetting and forgiving is thus the main challenge that the architect/artist has to face when designing a memorial. _Nelson Mota

Throughout history, mankind has not enjoyed even a hundred years of peace. So far, of the approximately 100 billion humans that have lived on Earth have suffered the war throughout that period. War made people sacrifice their youth and their lives, leaving families with the confusing and indelible wounds of sorrow. In an instant, conflict can destroy the peace and morality of everyday life enjoyed by communities, forcing them to live under a time of fear and madness. Most significantly, civil wars between the same ethnic groups with the same roots, as the ancient Greek historian Thukydides describes from his personal experience in A History of the Peloponnesian War, the blood that flows from the wound does not dry up, even after centuries. Throughout history, mankind has witnessed the harmful effects of civil wars and how they can go beyond the dismantlement of communities to the extinction of entire nations. In the twentieth-century, the tragedies of civil war have been repeated in Spain, Korea, Vietnam, Yugoslavia, and Yemen region, to name a few. Up until only recently, Syria and Yemen have continued to fail to embrace differences in their ideological and religious beliefs, suffering extreme oppression and civil war in their conflict with each other.

Five years after World War II, and two years after the establishment of the new Republic of Korea that freed the country from Japanese Imperialism, war broke out in the Korean peninsula. It was recorded in world history as the civil war that resulted in the greatest casualties in the shortest period. The conflict between South and North Korea expanded into an international war, which even led to a proxy war under the long years of the Cold War. Due to this, the land of KOREA, the country of people who pursue beauty and retain high ideals, was destroyed to a devastating degree over three years. The entire Korean peninsula, which is only 220,000km², was bombarded with 1.4 times the amount of air raids that were dropped on the entire European continent during World War II. As a result of local warfare, that used up stockpiles of ammunition that could have been used in another world war, sewage treatment plants were transformed into facilities for making conventional weapons. The mountains of Korea became barren mountains where there are no trees - those which used to run with beautiful mountain streams - and only grassroots remaining. Approximately 90% of the 1.5 million civilian victims in the North were burnt to death by napalm bombing and buried at sea due to the destruction of the dams, whereas, surprisingly, approximately 300,000 of the 500,000 civilian victims in the South were killed in massacres led by military police and hostile civilian groups. The South bloc was armed

with an anti-communist ideology, and three days following the outbreak of the war, a collective execution in the name of preventive custody was enforced, killing members of the press association, prisoners in the North, traitors from the North occupation period, and prisoners sentenced to 15 years or more in prison. Throughout the war, these executions were committed across South and North Korea. The Korean War resulted in 10 million dispersed families and 5 million war refugees, and yet it is now becoming a forgotten war. Here is a typical example of what happened in Konryeong Gol, Dong-gu-District, city of Daejeon: three days after the outbreak of the Korean War, for ten days, citizens were pulled out of their homes and prisons in the middle of the night, and collectively executed by firing squad without trial, all in the name of preventive custody. Until now, such facts have not been widely known, not only in Korea but also around the world. Fifty years have passed for the government of the Republic of Korea to face up to this reality and to admit the faults committed by the nation's governmental authority. Twenty years have passed before this development project for the Forest of Truth and Reconciliation could announce an international design competition, in order to finally commemorate this dark past.

In 2005, the Truth and Reconciliation Commission was established and initiated. For fifteen years, this task from which I sometimes wanted to hide was influenced by a shift in ideology - like a genetic disease that we have suffered since the beginning of the tragedy marked into our land - whenever the opposing parties of the government rotate their power, and the solution to resolve this burden faded away. It is now 2020, and it has been 70 years since the grudges of the dead and the resentments of the survivors were buried and sealed between the nameless mountains and valleys. Before they disappear forever into oblivion, with an invisible helping hand, the support of heaven, and the wishes of the families, we have unsealed this silence and taken the first steps towards creating a forest of truth and reconciliation.

Generally speaking, architects (landscape architects) must face history and scrutinize the years that have shaped the land with a touch of the wind that has constantly blown over such a long time. By revealing the histories of the people who lived here, the promise of youth that disappeared in war, the gleaming ideals, and the sad stories that have long fallen into a deep sleep in this terrain, we must bear witness and acknowledge the lessons to be learnt from such tragedies left by war. Stories that no one ever wants to remember should be recalled and revived as a place of memory, a place that should not be forgotten for posterity.

Born in the year of the outbreak of the Korean War, I first became an advisory member of the government committee at its early stages, and now I gladly accept the role as a master architect(MA) of the Truth and Reconciliation Commission. I wish that the war crimes triggered at the outbreak of this tragedy and the extreme division between people that resulted in such massacre will one day disappear from the earth. And I hope that the souls of the dead, who were forced to die in the year I was born, find peace and rest in this memorial park. Lastly, I sincerely wish that the surviving families, who lived a lifetime with their loved ones - those who disappeared in the middle of the night - buried in their

hearts, can once again meet these familiar faces with new memories in the great forest of reconciliation that you create. We deeply appreciate architects and landscape architects for participating in this meaningful project, and, with all our hearts, we truly hope to see great results.

Architect, Young-sub Kim

2 Competition Rules

2. Competition Rules

2.1 Competition Title

The International Design Competition for Korean War Memorial Park for Civil Victims: tentatively named 'The Forest of Truth and Reconciliation'

2.2 Objective

This competition aims to select a design for a memorial park that will commemorate civil victims who lost their lives during the Korean War.

2.3 Overview

- Organizer : Local Government of Dong-gu District, City of Daejeon, Republic of Korea
- Location : Nangwol-dong 12-2 and adjacent part of region, Dong-gu, Daejeon, Republic of Korea
- Site area : 98,601m² (Architecture Floor Area : 3,805m²)
- Total construction cost : 25.9 billion KRW (architecture/civil engineering/landscaping and VAT included)
- Total design fee : 632 million KRW (architecture DD, CD/landscape DD and VAT included)
- Design period : 12 months after signing the design service contract

2.4 Competition Type

This design competition is an open competition for domestic and international professionals.

2.5 Official Language and Measuring Unit

The official languages of the competition are Korean and English. All documents will be written and provided in Korean and English, and in the case that a dispute occurs the Korean will prevail over the English. All panels should be written in English. For all design panels and documentation, measuring units should follow the metric system.

2.6 Eligibility

This competition is open to domestic and international professionals in the field of architecture, landscape architecture, urban planning, and other relevant areas. In the case of a joint submission, a team can have up to a maximum of five (5) participating members. One of the members must be designated as the representative who will have the responsibility for design contract and the delivery of construction. The representative cannot be changed, and a change in team members can only be made during the registration period.

The representative must maintain the qualifying condition of the license issued by the country of origin at the time of the registration and must provide it in all documents with the submittal. The members of the competition organization, jury committee, competition administration, and any persons involved will not be able to participate in the competition.

2.7 Schedule

Announcement of the Competition	Sep. 11. 2020.(Fri)	
Distribution of Guidelines	Sep. 11. 2020.(Fri)	(website)
Registration	Sep. 11. 2020.(Fri) 9:00 ~ 10. 23.(Fri) 17:00	(website)
Questions Submission	Oct. 09. 2020.(Fri) 9:00 ~ 10. 16.(Fri) 17:00	(website)
Answers to Questions	Oct. 23. 2020.(Fri)	(website)
Submission of Entry	Nov. 30. 2020.(Mon) 17:00	(website)
1 st Design Evaluation	Dec. 03. 2020.(Thu) ~ 12. 10.(Thu)	(online evaluation)
Announcement of a shortlist	Dec. 11. 2020.(Fri) 17:00	(website)
Technical Review	Dec. 15. 2020.(Tue)	
2 nd Design Evaluation	Dec. 17. 2020.(Thu)	(presentation by teams on the shortlist)
Announcement of Winners	Dec. 18. 2020.(Fri)	(website)
Exhibition	Dec. 22. 2020.(Tue) ~ 12. 24.(Thu)	(location will be notified later)

Dates and times in all provided guidelines and materials are based on Korean Standard Time (GMT+9).

The schedule is subject to change, and information regarding any changes will be posted on the website of the design competition.

2.8 Registration

All competitors must open an account on the website and fill out the requested information to complete registration.

2.9 Reference Materials

All provided materials, except the announcement and design guidelines, will be available by direct download when logging in to the website. This service is only accessible to the accounts that complete registration. Some or all of the available materials and data can not be used for any purpose other than this design competition.

2.10 Q&A

All questions about the competition process, guidelines, or other provided materials must be submitted on a Q&A page of the website during the question submission period.

Inquiries via e-mail or phone are not accepted. All Inquiries must be written in Korean or English, and all responses to questions will be provided in Korean and English. All answers

to the questions will be regarded as additions or modifications to the competition rules or guidelines.

2.11 Submission

Competitors can submit only one (1) entry through the website. Competitors may confirm that their submission has been completed by logging in to their website account. Once they are submitted, all drawings and documents cannot be returned.

2.12 Anonymity

Anonymity of submissions must be maintained until the announcement of winners is made. All submissions should not bear any marks of identification. To ensure fair evaluation, competitors must not disclose the details of their proposals through media such as the internet or any kinds of social media until the final evaluation is completed. Violation of the above will result in cancellation of the prize and design contract.

2.13 Organizer

The organizer is the local government of Dong-gu District, City of Daejeon, and is responsible for financing the design competition and overseeing all related issues. The organizer will approve the decision of the jury committee, and take charge of the following processes.

2.14 Competition Management

The competition administration will manage all related process in the competition and the contact information is as follows:

- Director Joon-sung Choi (Professor, Chungnam University)
- Consultant Young-sub Kim
- Contact (Enquiries) Korea Architects Institute, 02)575-9751, kai@kai2002.org

2.15 Technical Review

The technical committee consists of three (3) professionals from across the relevant fields (architecture, landscape architect, etc.) The committee will conduct technical reviews of submitted works in relation to the competition regulations, guidelines, and related laws. The results will be reported to the jury committee.

2.16 Jury

The jury committee consists of a total of 7 jurors and 2 reserve jurors. The list is as follows:

Jurors: Charles Waldheim, Office of Charles Waldheim
Waro Kishi, Kyoto University
Francisco Sanin, Syracuse University
Andreas Fries, Herzog & de Meuron
Sung-kwan Lee, HANUL Architects & Engineers, Inc.
Jae-hun Jung, Kyung Hee University
Yi-gyu Choi, Keimyung University

Reserve Jurors : So-jin Lee, Leeon Architects
Han-song Lee, thinkTREE Architects & Partners, Inc.

- The jury committee meetings will be held with the attendance of jurors, consultant, and director of the competition management. The committee will appoint a chairman from the attended jurors.
- Based on the design competition regulations and opinions of the jurors, the chairman of the jury committee will determine the evaluation criteria and will announce the winners.
- The chairman will submit a report of review to the organizer.
- Reserve jurors will participate only in the case that the juror is in absence.

2.17 Evaluation

- The evaluation is conducted with the technical review and the design evaluation stages.
- During the technical review, the technical committee will review whether the submitted entries comply with the competition guidelines and report any violations or technical issues found to the jury committee.
- The design evaluation proceeds in two stages.
- The first evaluation is an online review by each individual juror. Based on the evaluation results from the jurors, a shortlist of 10 teams for second stage will be announced on official website.
- The second evaluation proceeds with the following steps; a declaration of the jury opening lottery for the order of presentation, presentations by each competitor, the jury evaluation, and the announcement of the winners.
- The presentations from competitors will comply with the followings:
 - The competitors must submit their presentation video file to the email address of the competition management by 17:00 on 16th of December 2020, one day before the second design evaluation. Competitors who fail to submit the presentation by the given time may be excluded from the prize. The file format will be announced later on the website.
 - The content of presentation is limited to the substance of the drawing panels and the

- design description only. It must not include contents other than the submitted materials.
- The presentation shall not exceed 10 minutes, and they must be presented by one of the registered team members.
 - Any changes or additions to the above will be notified in advance on the website.
 - The results will be posted on the website according to the schedule.
 - The announcement date is subject to change according to the circumstances of the organizer.

2.18 Disqualification

The jury committee may disqualify the submitted entries or cancel the prize for the following reasons:

- If competitors have submitted more than one (1) work.
- If the submission does not comply with the competition rules and requirements.
- If the anonymity of the entry is not upheld.
- If the submission is released before the final evaluation result is announced (including social media).
- If the submission is the work of oneself or others that has been previously published, or it has the same or a very similar design to any work announced to the public.
- If the entry is submitted by an unqualified person according to the eligibility criteria.
- If the entry has violated the submission deadline.

2.19 Awards

The evaluation results will be posted on the official website after the evaluation is completed, and only the awardees will be notified individually. The awards are as the followings:

1 st prize (1 entry)	: Contract of architecture design development, construction document, and landscape design development only (total design cost of 632 million KRW, VAT included)
2 nd prize (1 entry)	: 15 million KRW
3 rd prize (1 entry)	: 10 million KRW
4 th prize (3 entries)	: 5 million KRW
Honorable mention (4 entries)	

※ The above awards are subject to change according to the result of the jury's evaluation. Any change will be notified on the official website.

- The runner-up will be paid in Korean Won (KRW) within 30 days after the award ceremony. In the case of the joint entry, it will be wired to the representative.
- The prize includes fees such as taxes, a remittance charge, a currency exchange charge, etc. Taxes are bound by Korean tax laws.

2.20 Design Contract

- The winner will have the priority to the design contract with the organizer. The design contract must be signed within 10 days from the date of the announcement of winners, unless otherwise specified. However, depending on the circumstances of the project, the contract deadline can be adjusted in consultation with the contract partner.
- If the winner does not qualify for design qualification of the fields, in accordance with the national laws and regulations of the Republic of Korea, the contract will be proceeded only if a joint supplier is established who has the legitimate qualifications and who is registered as an architectural office according to 'Architectural Law'. This is in order to comply with Korean building codes and to ensure the smooth running of the permit process.
- The organizer will grant the right to negotiate with the next-ranked awardee if the winner fails to meet the above two conditions, renounces their prior negotiation right, breaks down the prior negotiation, or falls under any of reasons for cancellation of the award. In this case, the next-ranked awardee who signs the contract must return the prize money received and the organizer will pay the returned prize money to the 1st prize winner. However, if the winner falls under any of the reasons for cancelling the terms of the award, he or she will be excluded from receiving the prize money.
- The design contract will proceed in accordance with the relevant laws and regulations of the Republic of Korea, and it shall include all the costs and expenses for performing various processes including design development, the construction document, landscape design, and administration services for reviews and permits.
- The contract will be prepared in Korean based on the task instructions in accordance with the regulations of the Dong-gu District Office in Daejeon.
- If any change in the situation such as the changes of the budget, policy, or schedule occurs, the organizer may request the winner to modify the winning design, and the winner shall comply with a reasonable request of the organizer and reflect such changes.
- If the organizer suspends the project after the contract is signed, the actual expenses will not be settled and paid until the point of suspension.

2.21 Copyright

The copyright for each work will be held by the entrant. However, the organizer can use the contents of the submitted works for non-commercial purposes, including online and offline display, promotion and publication related to this competition, without extra compensation. A participating team (or individual) shall be deemed to have consented to the foregoing by submitting [Form 05] "Copyright Use Agreement". Entrants must ensure that the submitted work does not infringe the exclusive right of intellectual property rights of the third party, and if the intellectual property rights of third parties have been used, the right to use, such as the consent of the third party, must be verified in writing and attached at the time of submission. Any liability arising from intellectual property rights will be at the sole discretion of the entrants, and the winning entries may be cancelled if

there are any perceived infringements.

2.22 Dispute

The design competition will be conducted in accordance with the laws of the Republic of Korea. In the case of any dispute related to the competition, the court in the Republic of Korea will arbitrate or adjudicate.

3 Site

3. Site

3.1 Site Overview

- Location : Nangwol-dong 12-1, Dong-gu District, City of Daejeon, Republic of Korea
- Site Area : 98,601m²
- Zoning: Natural Green Tract of Land, Limited Development District (partially)

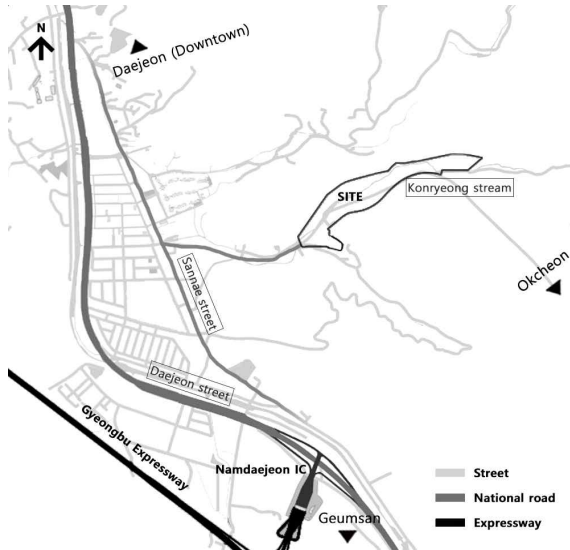
3.2 Urban Environment

1) Traffic and Access

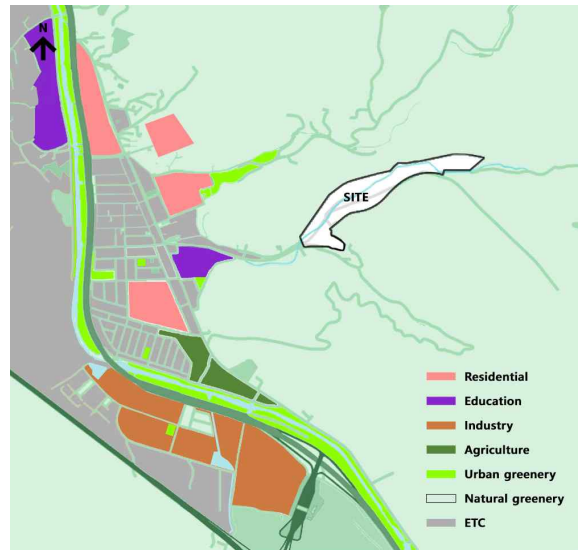
The site is located about 170km away from Seoul and 250km from Busan. Daejeon is a transportation hub, at which Gyeongbu Expressway, Honam Expressway, Gyeongbu Railroad Line, and Honam Railroad Line diverge. To reach the site, it takes about 10 minutes by car from Namdaejeon IC, and about 20 minutes from Daejeon KTX Station. When using public transport, it takes about 10 minutes on foot after leaving the bus at Sannae Elementary School which is located at the entrance to the site. Once the project commences, Konryong street (2 lanes, 7M) which currently penetrates the site from east to west, is planned to be moved and expanded to 2 lanes (15M) along the southern boundary of the site.

2) Land Use Around the Site

Most of the site is natural green tract of land, and the surrounding area is designated as a limited development district. The urbanization that began in the 1990s in Nangwol-dong flows north and south along Daejeon stream and Daejeon street that is about 1km away from the site. Apartment housing complexes of around 3,000 households have been built within a 1km in the 2000s, gradually being incorporated into the neighborhood of Dong-gu District, Daejeon. The major facilities around the site include Sannae Elementary School located 500m west of the site, and the driving license test center and the Namdaejeon logistics complex located 1.2km southwest. Orchards, greenhouse farms, and farmlands are scattered throughout the green area to the eastern, southern, and northern reaches of the site.



[Figure 01] Traffic and Access



[Figure 02] Land Use

3.3 Natural Environment

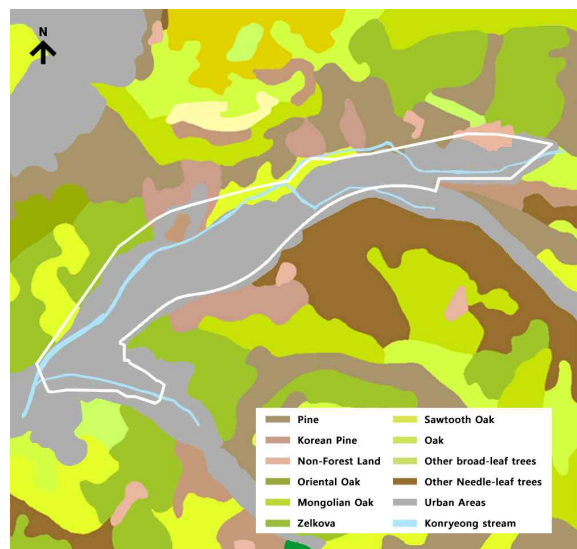
1) Mountains and Water Systems

The site is located in a basin formed in the intersection of Mt. Sikjang (596.7m) located 2km north and Mangdeok mountain top (438.9m) located 2km southeast. A diverse range of animals and plants find their habitats here. Major tree species include Pine, Nut Pine, and Larch.

From Mt. Man-in (537.7m) located 10km southwest. Daejeon stream flows north along the downtown area of Nangwol-dong, and Konryeong stream, a tributary of Daejeon stream, passes the site from the southwest boundary to the northeast. The average width of Konryeong stream is 8m, and the elevation of the stream is 97.69m at its lowest point near the southwest boundary of the site, with 115.30m at the highest point near the northeast boundary. The average water level of Konryeong stream is about 0.1m, and the maximum water level is about 1.7m.



[Figure 03] Mountains and Water Systems



[Figure 04] Planting Map

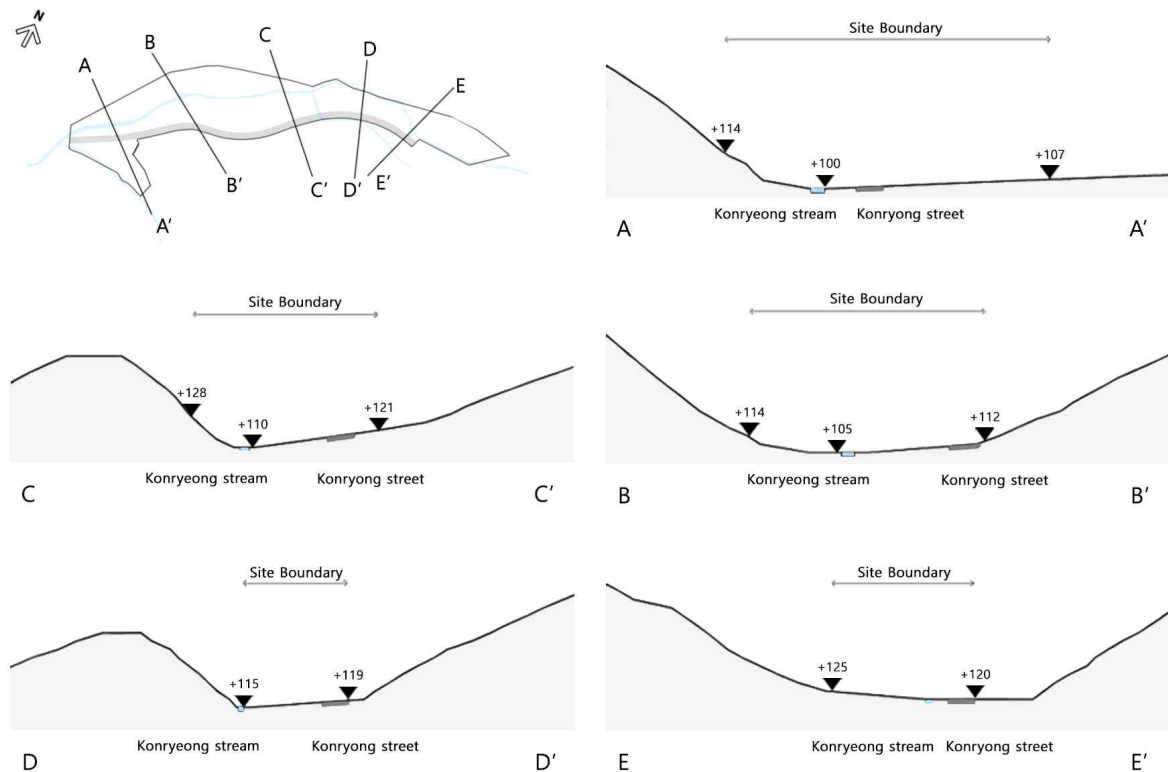
2) Climate

The summer is hot and humid, while the winter is cold and dry. The annual average temperature is 12.3°C, the highest temperature in summer is 34.4°C, and the lowest temperature in winter is -17.4°C. The average annual rainfall amounts to approximately 1,353.8mm. and 70% of it falls in summer, and the rainfall in winter is rare. The wind direction is most noticeable from the southwest, with an average annual wind speed of 1.7m/s.

3) Topography

① Topographic Section Analysis

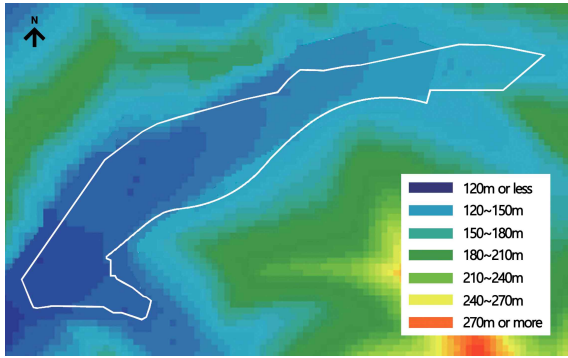
Located in a valley at the foot of Mt. Sikjang, the site is a valley-shaped basin surrounded by gentle sloping mountains that are not very high. It is narrow in the north-south direction and long in the east-west direction. Konryeong stream flows to the west along the lowest area in the valley. The bed of Konryeong stream is composed of alluvial soil in the lower area, and of lithosols, metasedimentary rocks, and schist in the upper area.



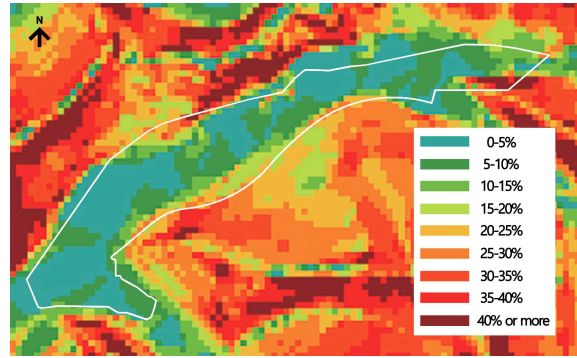
[Figure 05] Topographic Section Analysis

② Elevation and Slope Analysis

The site is a valley-shaped basin surrounded by ridges to the south and north, and it is gentle terrain that is low on the west and high on the east. The lowest elevation is 97m and the highest elevation is 147m. Overall, it is a gently sloping ground, and less than 10% of the slope accounts for 64.5% of the total site. Some areas in the central north have steep slopes that are at an angle of more than 30%. It requires an analysis of slope stabilization on this area. It must undergo an analysis of slope stability facilities.



[Figure 06] Elevation Analysis



[Figure 07] Slope Analysis

4 Design Guidelines

4. Design Guidelines

4.1 Design Objective

The objective of the design is to create a ‘memorial park’ that will become a national symbol of reconciliation to commemorate the civil victims of the Korean War and to offer some comfort to their bereaved families. The project is composed of two major elements; the memorial hall that is place to help people understand the history of conflicts, and the open park where a wide range of activities and purposes, such as education, exhibition, communication, commemoration, and rest, can be opened up to citizens based on understanding of the unique context that includes the tragic incident occurred in the site.

4.2 Design Considerations

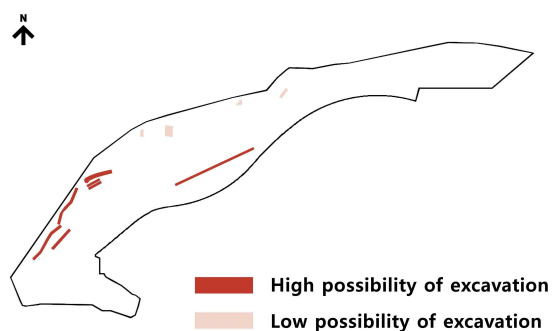
1) Placing the Excavated Remains and the Site of Excavation

The design should fully consider the current excavation status and plans for excavating the remains of civil victims nationwide. The number of recovered remains so far is about 2,505 nationwide, and most of them will be enshrined in the park after cremation. Additional remains to be excavated in the future must be accommodated. The excavated areas and the presumed area of remains within the site are mostly concentrated in the northwest side. It is expected that the excavation will be completed in the latter half of 2020. Some of the excavated remains and areas on the site will be either preserved or exhibited for an education purpose.

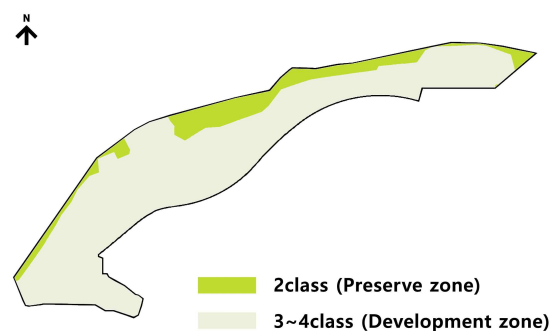
(Refer to ‘Statistic of the Civilian Massacre’ and ‘Statistic of Excavation’ in 6.2 Reference Material)

2) National Environmental Assessment

Certain areas along the southern and northern boundaries of the site have been classified as second-class areas in the limited development district based on the national environmental assessment, so the design proposal must comply with the relevant laws and regulations in consideration of the conservation plan. It would be feasible to propose facilities (such as a promenade, outdoor exercise facilities, etc.) that support the operation and management of the park.



[Figure 08] Presumed Site of Remains



[Figure 09] Environmental Impact Assessment

3) Existing Facilities on the Site

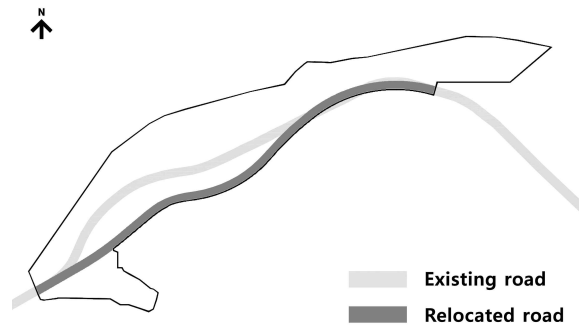
Religious facilities, factories, warehouses, housings, and greenhouses are scattered throughout the site. All existing facilities are subject to demolition.

4) Roads Passing Through the Site

Konryong street runs east-west direction along the Konryeong stream. A 7m-wide existing road will be demolished, relocated, and expanded as a 15m-wide road along the southern boundary.



[Figure 10] Existing Facilities on the Site



[Figure 11] Roads Passing Through the Site

4.3 General Guidelines

1) Regulations

① Building-to-land ratio and floor-area ratio

- The Building-to-land ratio should be less than 20%.
(Article 45, Clause 1. Guideline of Urban Planning of the City of Daejeon)
- The floor-area ratio should be less than 80%.
(Article 50, Clause 1. Guideline of Urban Planning of the City of Daejeon)

② Number of Floors

- The story of the building should not exceed 4 floors.
(Attached Table 17 in Enforcement Ordinance of National Land Planning and Utilization Act)

③ Parking

- The number of parking spaces should be at least one (1) per 150m² of the facility area.
(Article 6, Clause 1 in Enforcement Ordinance of Parking Space)
- In case that the required number of parking bays is not less than 50, parking for disabled should be added by 3% of the total parking bays.
(Article 14, Clause 2 in Parking Guidelines of the City of Daejeon)

2) Master Plan Guidelines

Master plan should include :

- The main theme and its design strategies for the master plan to realize the design objective.
- The traffic and circulation plan with full consideration of the present conditions of the urban environment.
- A landscape plan that will preserve and enhance the site by respecting the current conditions of the natural environment.
- Full understanding of the design guidelines and regulations, reflecting them in the plan.
- The integrated design among the field of architecture, landscape, urban planning, civil engineering, etc.
- A symbolic space in which the memorial hall and park are sensitively designed.
- Pleasant walkways that are in harmony with natural landscape.

4.4 Program Guidelines

1) Architecture Design

The main program should include memorial, exhibitional, educational, service, and transitional space. Refer to the figure 12 'Outline Area Schedule.' Some adjustments will be made according to the design. Programs in a memorial hall is listed below from item no. 1 to no. 6, and item no. 7 is about outdoor service facilities.

① Memorial Space (indoor)

- Propose a plan that helps visitors deeply understand the sufferings of the bereaved families.
- Propose a solemn space that offers its condolences to the victims.

② Exhibition Space

- Design an exhibition space which deepens the understanding of tragedies.
- Allow space for additionally excavated remains and historical records for the future.
- Provide a storage exhibition showcases for special exhibitions.

③ Education Space

- As a multipurpose space for education and events. It should accommodate programs for local communities.
- Provide a lounge for instructors and a storage for events.
- Include a reference room to preserve research data on civil victims of the Korean War.

④ Office and Amenities

- Office space is composed of a maintenance office and a management office.
- A maintenance office as a supporting facilities should include a janitor's office, cleaner's room, etc.
- A management office should be designed and furnished for two administration officials.

- Consider designing amenities such as a cafeteria, nursery, locker room, etc.

⑤ Common Space

- As a service space, common space includes aisles, stairs, bathrooms, machine rooms, loading space, etc.

⑥ Transitional Space

- Transitional space shall be designed as a place for social gathering.

- It can be used as a space that links interior and exterior spaces and integrates the different functions and programs.

- The transitional space can be integrated with either the memorial space and the common space.

⑦ Outdoor Service Facility

- Propose an information center and two (2) or more outdoor bathrooms for visitors.

			Boundary of Memorial Hall
Classification	Major Facility	Area	
Memorial space	Memorial hall	12%	Transitional space 5%
Exhibition space	Permanent exhibition	12%	
	Special exhibition	12%	
	Storage	10%	
Education space	Multipurpose room	7%	
	Reference room	2%	
Office and Amenities	Management office	2.5%	
	Amenities	3%	
Common space	Aisle, Stairs, etc.	30%	
Outdoor service facility			
	Information center	0.5%	
	Bathroom (2)	4%	
Total		100%	(3,805m ²)

[Figure 12] Outline Area Schedule

※ Within the range of the total building area (3,805m²), ±5% of each space can be adjusted.

2) Park Design

The park design should propose programs and supporting facilities that will aid the remembrance of historical incidents and serve as an educational venue. Plans should include the preservation and experience of the excavation site, the outdoor memorial space where remains can be enshrined and commemorated, and recreational space which community can use routinely. It should also be designed as a 'memorial park' that continues to enshrine the remains that have been excavated from other regions.

① Entry space

- Entry space should be designed to become a symbolic space as the entrance to the memorial park.
- Consider the link between the parking lot and the memorial hall, and enhance the pedestrian connection.
- The parking lot should be proposed as an ecological parking lot.

② Excavation sites

- The sites for which remains excavated and presumed to be excavated shall be preserved as much as possible.
- Propose ideas of how to leave the traces of the sites and how to use the sites as an educational purpose.
- The site where remains are scheduled to be excavated shall be preserved and yet, it needs to be treated in harmony with the park.

③ Memorial Space (outdoor)

- The memorial space should be designed to be a symbolic and monumental space where remains classified by region are placed.
- Propose a way of remembering and commemorating historical incidents and victims.
- Include a space that can accommodate a large number of people during a specific event period (memorial ceremony and holidays).
- Proposed Monumental facilities should not harm the natural landscape.
- Consider estimated number of remains and volume of enshrinement. Refer to reference materials "statistics of civilian victims" and "regional statistics of remains and articles of civilian victims"

④ Recreational Space

- Propose community park that can be used freely and regularly.
- Avoid functional conflicts between the memorial space and recreational space.
- Accommodate various recreational activity programs so that the park can be used actively.
- A separate parking lot can be proposed as needed.

3) Traffic Design

① Access

- Establish a plan for the pedestrian environment of the community and avoid traffic congestion.
- Provide an easy in and out vehicle circulation connected to the new road.

② Pedestrian Circulation

- Design a safe and convenient pedestrian environment, and propose a three-dimensional pedestrian environment if necessary.

③ Parking

- The parking lot should be large enough to accommodate no less than 107 cars and 8 buses and also it should be designed to be environmentally sustainable.
- The design should allow safe movement of pedestrians from parking to buildings and the parking layout should provide continuous flow of traffic through the lot.
- The size of 1 parking space should be larger than below.
Car=W:2.5m X L:5m, Bus=W:3.6m X L:17m, Handicapped parking=W:3.3m X L:5m

4) Civil Engineering

① Water Management

- Maintain a drainage system that allows rapid drainage on the site during heavy rainfall.
- pedestrian bridge should be proposed when a circulation crosses the river.

② Cut and Fill

- Minimize the filling and cutting of the ground, and use cut soil as much as possible for filling.

5) Eco-friendly Design

- The park should be designed to preserve ecological balance on the site, reducing carbon emission and minimizing the impact on the environment.
- By considering a microclimate of the site, propose passive design that will respond to the environmental condition and apply methods of reducing heat island effects.
- Apply the logic of 3R(reduce disposal of resources, reuse resources, and recycle resources).
- Minimize the amount of water required for facilities and outdoor spaces.
- Provide renewable energy systems.

4.5 Cost Estimate

1) Construction Cost

- The estimated construction cost of this project is 25.9 billion KRW. The total construction cost consists of 9 billion KRW for buildings, 14.9 billion KRW for civil engineering and landscaping, and the addition of VAT.
- The building construction cost includes 1 billion KRW for the construction cost of new and renewable energy and does not include the cost of exhibition works. (to be added.)
- The construction cost of civil engineering and landscape includes the removal cost of impediments and Konryong street, and the relocation cost of the road.

Classification	Contents	Estimated construction cost (in KRW 0.1 billion)	Note
Buildings	Building construction cost	80	Does not include the cost of exhibition works
	New and renewable energy construction cost	10	
Civil engineering and landscape	Removal cost	1.6	Impediments, road
	Landscape construction cost	92	
	Road relocation and civil engineering	51.4	Including the cost of the road pavement
VAT		24	

※ At the time of signing the contract, certain contents may be adjusted according to the task instructions distributed by the organizer.

- The design should be economically feasible based on the guidelines while satisfying the construction cost estimate presented above.
- If the design of the winning entry exceeds the given range of construction costs, the winner is obliged to modify the design in consultation with the organizer. Failure to this obligation will be regarded as a waiver of the design right.

2) Design Fee

- The design fee for this project is KRW 632 million (including VAT).
- The design fee does not include the cost of exhibition design, environmental impact assessment, and archaeological field survey (to be added later).

Classification	Note
Architectural design (design development, construction document)	Include the cost of accreditation Does not include the cost of exhibition works
Landscape design (design development only)	Does not include the cost of environmental impact assessment
VAT	Included

※ At the time of signing the contract, certain contents may be adjusted according to the task instructions distributed by the organizer.

5 Submittals

5. Submittals

5.1 Submission Requirements

1) Drawing Panels

- All four presentation panels should be submitted in A1 (W: 841mm x H: 594mm) landscape format digital files.
- Additionally, four presentation panels to be integrated into one (1) A2 landscape format digital file.
- The image file of the design panels should be submitted in ‘300 dpi or higher, jpg format, and 50MB or less for each file’.
- The digital files should be named as follows:
 - Four Panels (A1): registration number_panel_panel number.jpg
 - One Integrated Panel (A2): registration number_integrated panel.jpg
 - Bird’s Eyes View of Overall Park (300 dpi): registration number_bird’s eyes view.jpg
- The bird’s eye view should be submitted in ‘300 dpi or higher, jpg format, less than 25MB for each file’. Also, if the image of the submitted file is different from the 3D image of the submitted documents, it shall be regarded as a violation of the competition guidelines.
- Refer to the the digital topographic map (.dwg) provided on the website when placing the north arrow
- The scale of the master plan should be 1:1200.
- The contents of panels should be based on the design descriptions.
- The layout of the panels is as follows, and the panel numbers and PIN should not be shown.
- The scale and format can be freely configured according to the contents except for the master plan:

Bird’s eye view and design concept	Master plan
Design of the memorial hall	Design of the park and other features

[Figure 13] Example of the Contents
(Can be freely configured)

01	02
03	04

[Figure 14] Panel Layout

- The design description should be submitted in ‘high quality print, pdf format, less than 50MB’.
- The written contents of the submitted documents should be scanned and saved as ‘pdf format, combined’ to be submitted.
- The bird’s eye view should be submitted in ‘300 dpi or higher, jpg format, less than 25MB for each file’. Also, if the image of the submitted file is different from the 3D

image of the submitted documents, it shall be regarded as a violation of the competition guidelines.

- The file name of each submission should follow the following criteria:

2) Design Description

- The design description should include the followings:

The contents below must be included as absolute requirements but the order can be adjusted. Other content to be added shall only be prepared within the given number of pages.

Cover Sheet (refer to 'Form 03' in the Appendix)
Contents
Bird's Eyes View
Design Overview and Concept Statement, Facility Area Table
Master Plan (1:1200)
Circulation Plan for Pedestrians and Vehicles
Spatial Plan for Commemoration and Exhibitions in the Memorial Hall
Floor Plans of the Memorial Hall, Elevations (more than 4 sides), Sections (longitudinal/cross)
Interior and Exterior Images of the Memorial Hall
Park Design
Detailed Plan of the Memorial Space
Planting Plan
Images of the Park's Major Spaces

- The design description should be prepared on no more than 20 sheets of A4 (210mm x 297mm) landscape format. However, the cover sheet and table of contents are not to be counted.
- The scale and orientation of drawings can be freely laid out.
- Page numbers should be shown on all sheets except for the cover and table of contents.
- The design description should be submitted in 'high quality print, pdf format, less than 50MB'.
- The digital files should be named as follows:
 - Design Description: registration number_design description.doc

3) Documents

- Design Competition Application Form [Form 01]
- Joint Participation Agreement [Form 02]
- Cover Sheet for the Design Description [Form 03]
- Architecture Overview [Form 04]
- Copyright Use Agreement [Form 05]
- A Copy of Architect License of Representative
- The written contents of the submitted documents should be scanned and saved as 'pdf format, combined' to be submitted.
- The digital files should be named as follows:
 - Submitted Documents: registration number_name of the document.pdf

5.2 Guidelines

- All drawings and documents can be colored.
- All drawings and documents must not be marked with any recognizable indication of the competitors, and violations of this may result in disqualification.
- Except for the master plan on the presentation panel, scale and orientation of drawings can be arranged freely.
- The name of program and space should be marked on drawings. Competitors are not allowed to arbitrarily use the English name of proper nouns, such as the site, surrounding places, roads, streams, and buildings.
- All notation should be written in English, Arabic numerals, and metric system.
- Any arbitrary adjustments in drawings such as the size of buildings or site boundary will be prohibited.

5.3 Evaluation Criteria

1) Main Points of Evaluation

- An example of the evaluation criteria is as follows.
- The contents of evaluation and its weights will be discussed by the jury committee.

Classification	Contents	Weights
Master Plan (Site Plan)	<ul style="list-style-type: none"> · Concept and design strategies · Traffic and circulation plan · Site planning and scenery · Design considerations and regulations · Integrated approach among architecture, landscape, and civil engineering · A symbolic place where the memorial hall and park are harmonized 	20
Memorial Hall (Architectural Design)	<ul style="list-style-type: none"> · Architectural design concept and strategies · Interpretation of programs · Symbolic and solemn memorial and exhibition space · Linkage with the park and surrounding landscape · Creative form and materiality · Elevation/section design 	40
Park (Landscape Design)	<ul style="list-style-type: none"> · Design to commemorate historical incidents and victims · Consideration of surrounding landscape and its topography · Planting design in consideration of the local plants · Design that can accommodate various outdoor activities · Community-friendly space 	30
Others	<ul style="list-style-type: none"> · Eco-friendly design · Universal design · Economical construction and maintenance 	10

2) Criteria of Disqualification and Deduction of the Points

- The criteria for disqualification shall follow '2.18 Disqualification', however, the determination of disqualification or deduction of points will be made by the jury committee.

Classification	Contents	Note
Violation of law or regulations	· Violation of major articles of the National Land Planning Act, Parks and Greenery Act, Building Code, Parking Lot Act, Act on the Guarantee of Convenience Promotion of Persons with Disabilities, and other relevant laws	
Violation of competition rules	· Anonymity	
	· Exceeding construction cost estimate	
	· Submittals size	
	· Exceeding given number of pages of design description	
	· Submission guidelines	

6 Appendix

6. Appendix

6.1 List of forms

- [Form 01] Design Competition Application Form
- [Form 02] Joint Participation Agreement
- [Form 03] Cover Sheet for the Design Description
- [Form 04] Architecture Overview
- [Form 05] Copyright Use Agreement

6.2 List of Reference Materials

- Digital Topographic Map (CAD file)
- Relocate Road Map (CAD file)
- Presumed Site for Remains (CAD file)
- Environment Impact Assessment Diagram (CAD file)
- Plan and Section of Konryeong Stream (CAD file)
- Planting Map (PDF file)
- Photos of the Site (JPG file)
- Statistic of the Civilian Massacre (PDF file)
- Statistic of Excavation (PDF file)

【Form 01】

Design Competition Application Form				
Registration Number				
Representative	Full name and firm name		Telephone	
	Nationality		E-MAIL	
Team members	1	Full name and firm name	Telephone	
		Nationality	E-MAIL	
	2	Full name and firm name	Telephone	
		Nationality	E-MAIL	
	3	Full name and firm name	Telephone	
		Nationality	E-MAIL	
	4	Full name and firm name	Telephone	
		Nationality	E-MAIL	

We apply for the "International Design Competition for Korean War Memorial Park for Civil Victims" in compliance with all regulations of the competition.

. . .2020

Representative_____ (signature)

Team member_____ (signature)

Team member_____ (signature)

Team member_____ (signature)

Team member_____ (signature)

Mayer of the Dong-gu District

【Form 02】

Joint Participation Agreement

- Article 1 (Purpose) This agreement sets forth provisions for each party during the process of joint participation between () and () to the "International Design Competition for Korean War Memorial Park for Civil Victims".
- Article 2 (Representative of the Joint Participation) the name and location of the office of the lead firm of joint participation (hereinafter referred to as lead firm) are as follows:
1. Representative:
 2. Firm:
 3. Address:
- Article 3 (Members of Team) excluding the lead firm, the following are the members of the joint participation team:
1. Team Member #1: Name (Firm: address :)
 2. Team Member #2: Name (Firm: address :)
 3. Team Member #3: Name (Firm: address :)
 4. Team Member #4: Name (Firm: address :)
- Article 4 (Rights of the lead firm) the lead firm, on behalf of the members of the team, shall have right to express intention regarding the submission and receipt of document, and acquisition and waiver of rights, to the organizer of the competition and other third parties.
- Article 5 (Effective period) the current agreement shall be effective immediately after the signing by each party and terminate by fulfillment of competition. However, the agreement shall be effective as long as any rights and obligations related to the service contract made with the organizer of competition remain.
- Article 6 (Obligations) the members of the team shall diligently utilize all necessary knowledge and technologies to fulfill the purpose set forth in the Article 1 based on the trust.
- Article 7 (Responsibility) the members of the team shall mutually agree to be responsible for the fulfillment of the service obligation.
- Article 8 (Mutual responsibilities of members) the members shall mutually agree to compensate any damage caused on any third party or other members of the team in relation to the performance of work.
- Article 9 (Limitations of transfers of rights and obligations) members shall not transfer their rights and obligations under this agreement to any third party.
- Article 10 (Measures against withdrawal) Any member's withdraw in the process of the competition results in ineligibility for the competition.
- Article 11 (Creation and storage of agreement) the joint participation agreement shall be made as above and () copies shall be made as evidence, which shall be separately stored by the lead firm after signing the agreement.

. 2020

Representative (Firm)	Representative name	(Signature)	Joint Participation (Firm)	Representative name	(Signature)
	Firm			Firm	
	Address			Address	
Joint Participation (Firm)	Representative name	(Signature)	Joint Participation (Firm)	Representative name	(Signature)
	Firm			Firm	
	Address			Address	

Mayer of the Dong-gu District

【Form 03】



Korean War **Memorial Park** for Civil Victims

International Competition Information

[Registration Number: _____]

Design description Cover sheet
(Lateral orientation of A4:210mm x 297mm)

Architecture overview

Classification		Contents	Note
Architecture Design	Building area		m ²
	Total Floor Area	Ground	m ²
		Basement	m ²
	Building coverage ratio		%
	Floor-area ratio		%
	Structure		
	Number of Stories		
	Highest level		
	Parking		Total number of parking spaces in the park.
	Etc.		

Mayer of the Dong-gu District

Copyright Use Agreement

I, as the copyright holder (the representative) of the below work submitted to "International Design Competition for Korean War Memorial Park for Civil Victims", hereby agree on the use of the work for copy, display, distribution, rental, public transmission and the creation of derivative works, as part of publication, display, public relations and the establishment of business plans related only to Daejeon Dong-gu District design competition.

. . 2020

Representative

(signature)

Mayer of the Dong-gu District