

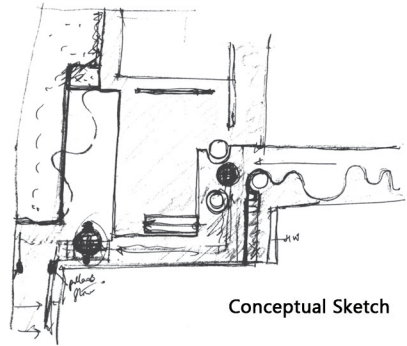
RBANMS SCHOOL

EXTENTION
BANGALORE, INDIA
June 2010

OLD & NEW

A single class room extension to a primary school for the underprivileged of the neighbourhood of central Bangalore created an opportunity of making the room like a tree house nestled between the existing mango and jack fruit tree so that it could make a miscellaneous space for assembly, parent teacher meetings, children's activity and break / lunch area.

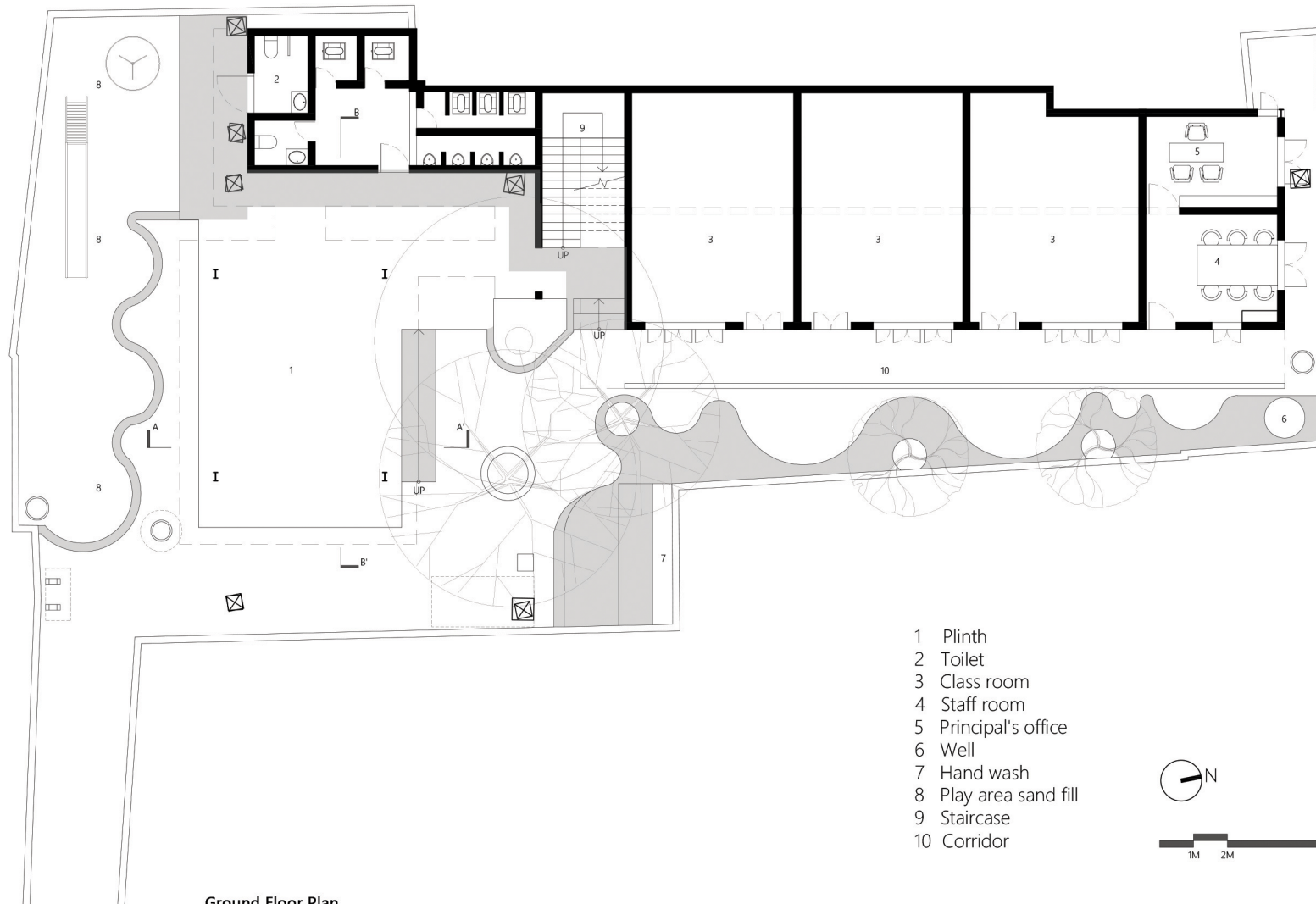
Using a metal structure, it is a pavilion with perforated sheet and bamboo mats above and an insulated roof. The whole school now has a focus area next to the play area, used really well for simple things like pick up and drop off for children etc. The classroom above helped create something that the school was not aware of and was missing. A place that could be made by virtue of just the classroom addition integrated to the stair and main building block of the school.



Conceptual Sketch



Site intervention and existing condition



Ground Floor Plan

- 1 Plinth
- 2 Toilet
- 3 Class room
- 4 Staff room
- 5 Principal's office
- 6 Well
- 7 Hand wash
- 8 Play area sand fill
- 9 Staircase
- 10 Corridor



Views of intervention