

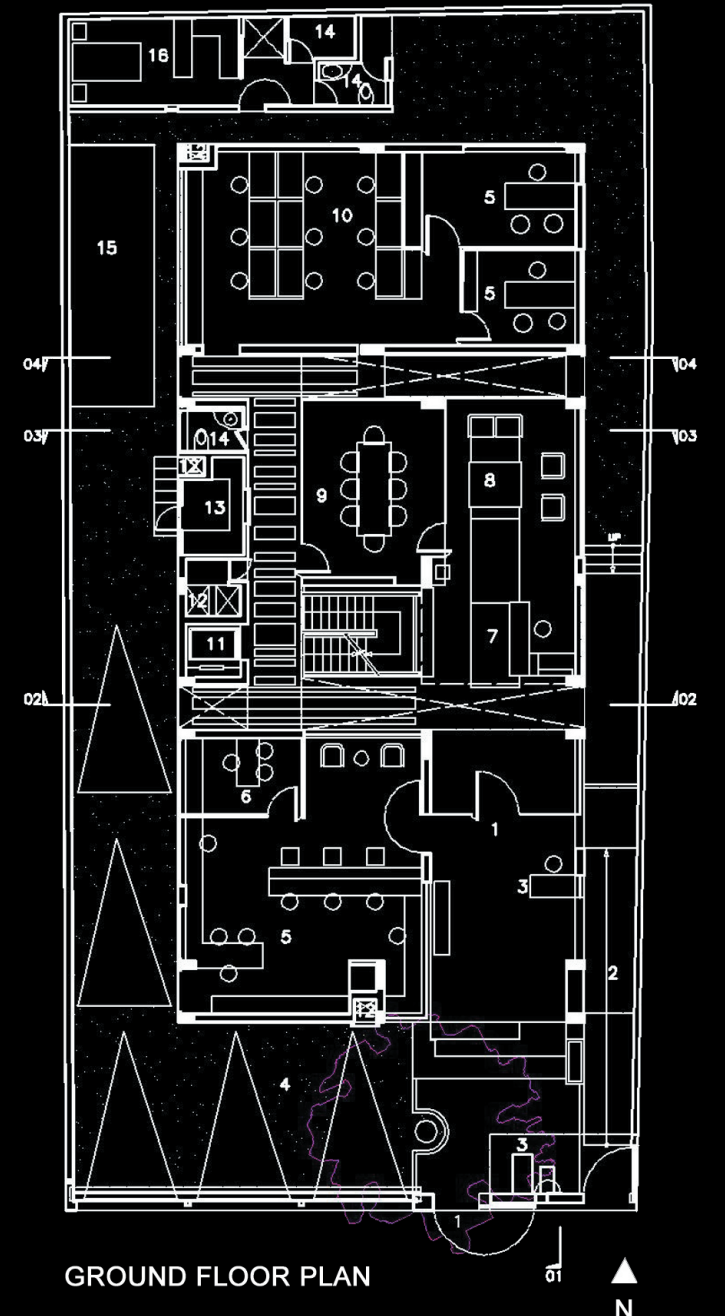
CORPORATE OFFICE

BANGALORE, INDIA, 2001-02



Bangalore is considered the information technology capital of India and the boom in real estate has seen the ubiquitous mushrooming of the structural glass and aluminum clad facades, external to any organizational clarity. In the central business district where this project is located, space and light are at a premium as buildings sit in close proximity.

This is the corporate office of a business house with diverse interests. Located in a dead end street situation in the central business district it occupies about 10,000 square feet of floor area.

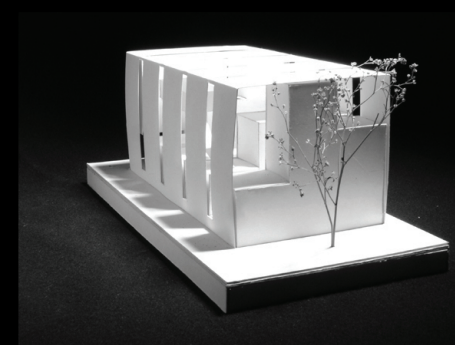


GROUND FLOOR PLAN

1. ENTRANCE
2. CAR PARK
3. SECURITY
4. TRAVEL OFFICE
5. RECEPTION
6. MEETING ROOM
7. GENERAL STAFF AREA
8. TOILET / BATH
9. LIFT
10. SERVICES DUCT
11. PANTRY
12. CARETAKERS ROOM
13. TRANSFORMER



WEST ELEVATION



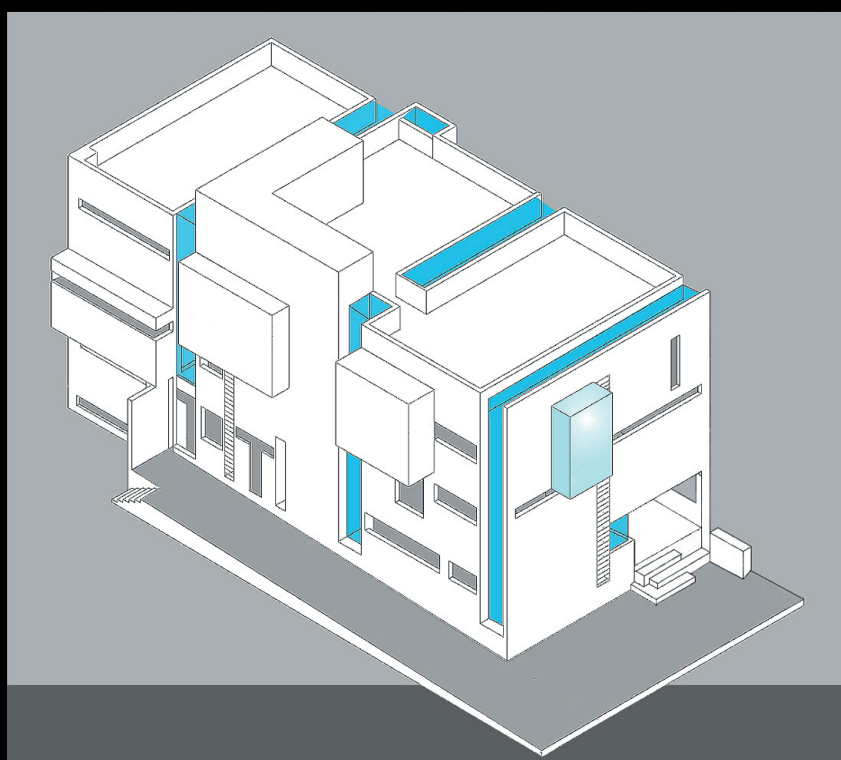
This is a building that attempts to work around the idea of splicing the self contained urban box with light wedges – almost like courts, that functionally divide the block into 3 independent segments. These can be read as functional divisions that have developed as the work culture and hierarchy of the business house has developed over 2 generations. The front becomes the most private and isolated set of cells for the managers, the middle becomes the zone of meeting together / outsiders at each level and the rear is the general staff area. Each bay has thus also been designed as a structurally self-contained one, allowing continuous expanses of glass.

The three light strips that run complete from the ground floor level to the top, completely slicing the block, inform the development of the building, and the staircase shifts to access different floors.

Vertical movement is split into two discontinuous movements to engage the user by moving through transversely into the varying zones of light. This is done importantly to retain privacy of the uppermost floors, where the owners have their private workspaces - by distancing the stair farther away from them. The first staircase is located about the second light wedge (leading from ground level to basement and first floor) and the second one is located about, and in the third light wedge.

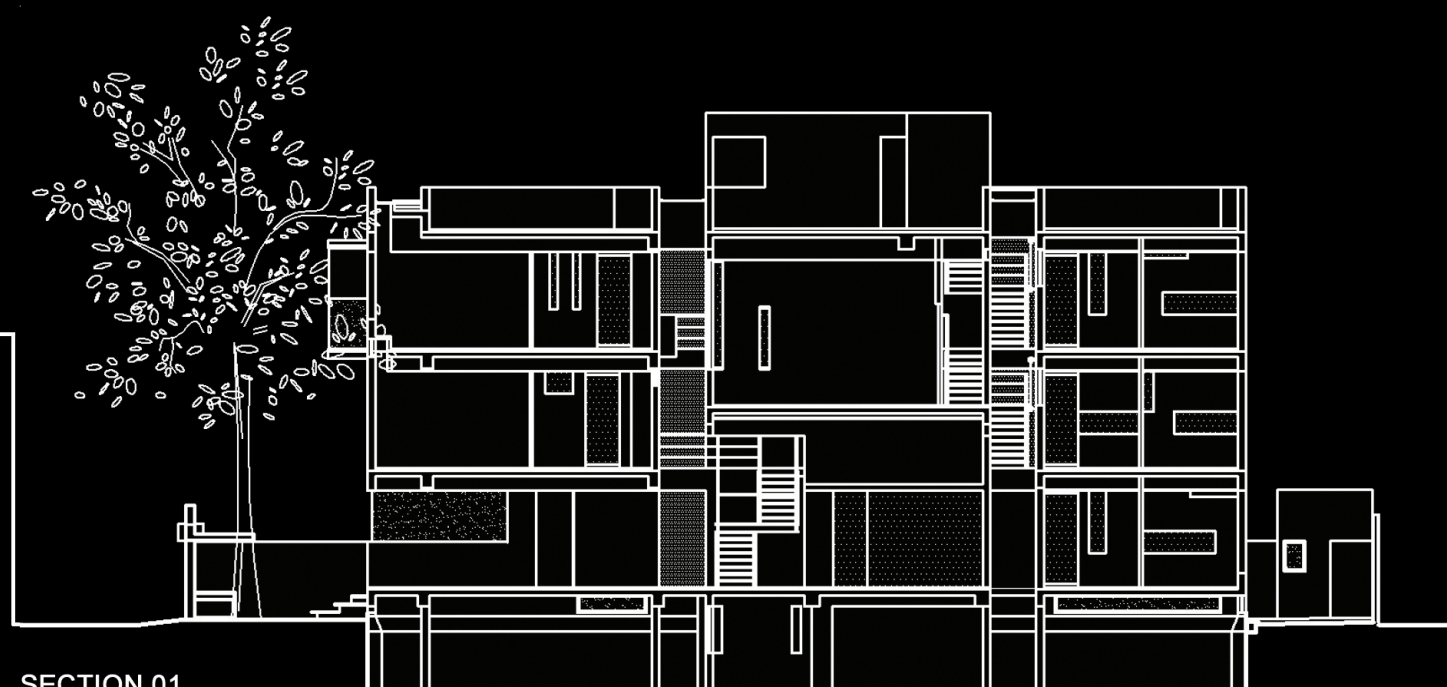
The stair made of suspended steel sections is sprayed with industrial hammer tone paint and the treads are linseed oil coated local hardwood. The lightness of the stair is essential to transparency between bays.

The entire building has three floor levels other than the basement. However the central bay between light strips are glass boxes composed of meeting rooms on each of the three levels. One half of this bay breaks in section into one and half floors each (reception and waiting space on the ground floor level and the Board room above), to create innumerable conditions of visual contact.



SOUTH ELEVATION

0 1m 4m
0.5m 2m



SECTION 01

