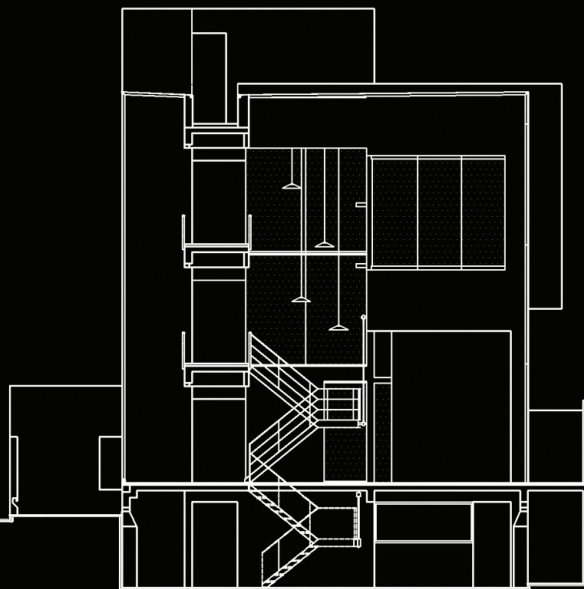


CORPORATE OFFICE

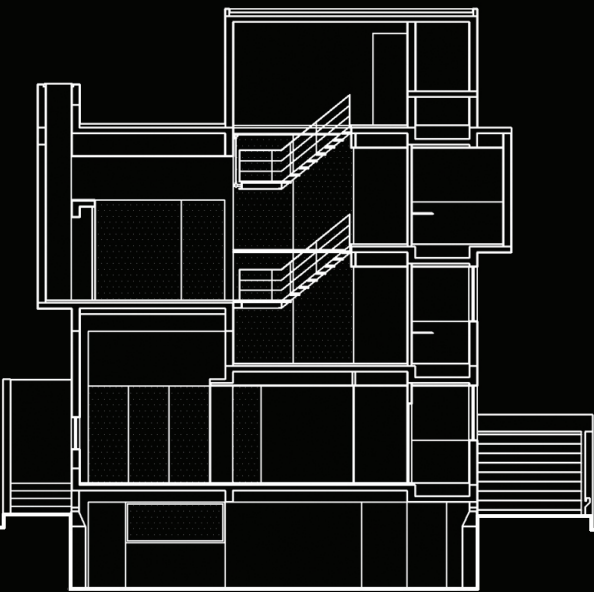
BANGALORE, INDIA, 2001-02



SECTION 02

The connection between within the tripartite building block is formed by a linear passage that is seen as a bridge connecting the three structurally independent bays. The passage floor is picked up as an exaggerated bar code pattern made by inlaying white marble in the otherwise gray-green expanse of the kotah stone floor. In the light shafts, the marble often glows as if it were bands of broken sunlight. At places this random pattern of the flooring is repeated as bands of textured paint on the wall that reflect the same pattern of the floor. The central transparent meeting rooms allow for a visual continuity between bays. The bridge like connection adapts the language of the stair for its railings, in its lightness and transparency.

The light strips are all of frosted glass, as are all the glasses in the building. The client, an avid art collector also required that many of the original art works be displayed here. Thus the option of frosted glass to soften the natural light was honed in on. This, and the close proximity of the buildings on neighbouring lots made for the choice of frosted glass. At the corner where the light strip turns to the roof the top frosted glass slopes inwards. It collects all the water on the terrace, which is then taken down. The glass wedges at the top have been deliberately kept lower than the height of the 3 masonry blocks. The heat that can accumulate in these light strips is ventilated by the use of hidden away turbo ventilators; the hot air is pulled out as it rises into the light strips. The enclosed spaces of the cabins have air-conditioning but all the spaces are naturally ventilated.



SECTION 03



SECTION 04



The gypsum board partitions are incised and openings made by strategic openings wherever required and often at the ceiling level to allow the roof to feel as a continuous surface and the whole building as one space within which separate spaces are made yet letting the overall maintain its presence.

Within this urban box there is a private realm that opens itself to the outside selectively and as the clouds go by, the inside of the building takes innumerable nuances of sunlight in all its shades of colour, the grayness of the clouds and the hues of the rainbow.



SECOND FLOOR PLAN

1. WAITING
2. CABIN
3. SECRETARY
4. MEETING ROOM
5. BOARD ROOM
6. FILING ROOM
7. TOILET
8. DUCT
9. LIFT
10. GENERAL STAFF AREA



0 1m 4m
0.5m 2m

