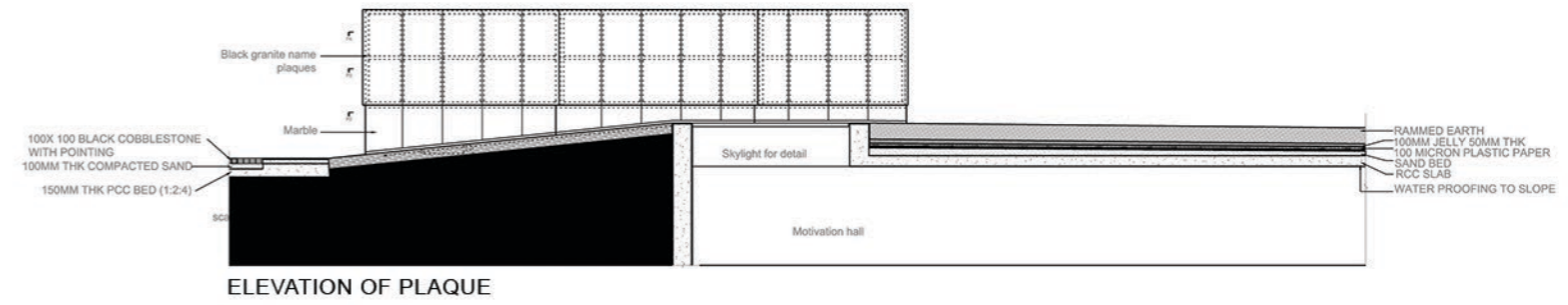




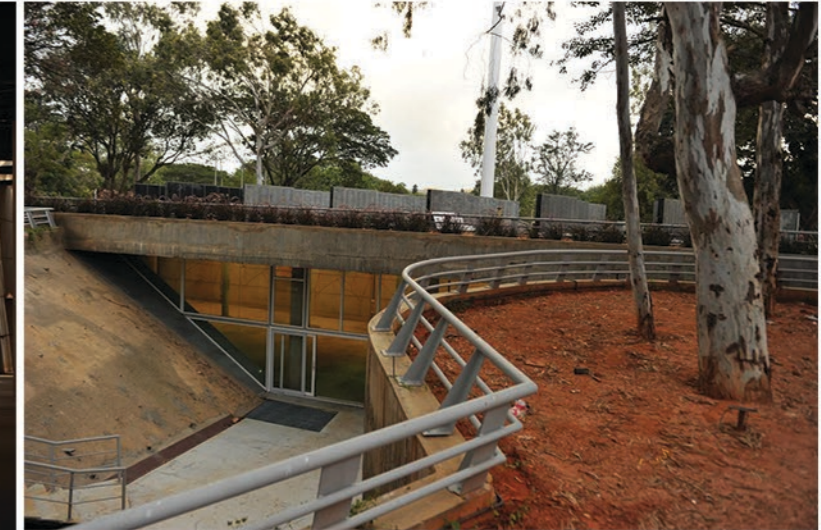
COURT 1 PUBLIC ENTRY AND SEATING AREA DESCENDING FROM GROUND TO MOTIVATIONAL HALL ENTRANCE



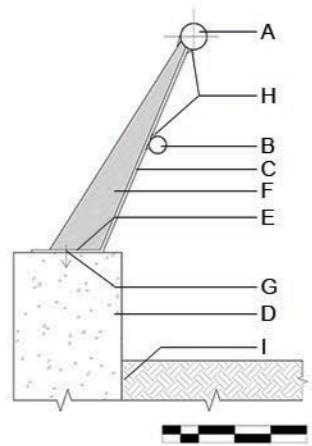
ELEVATION OF PLAQUE



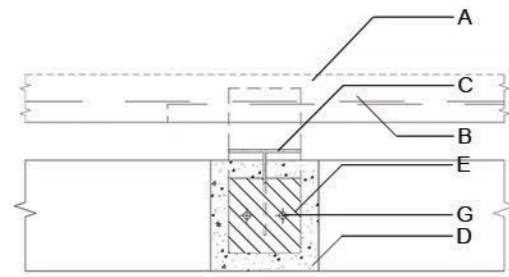
MOTIVATIONAL HALL



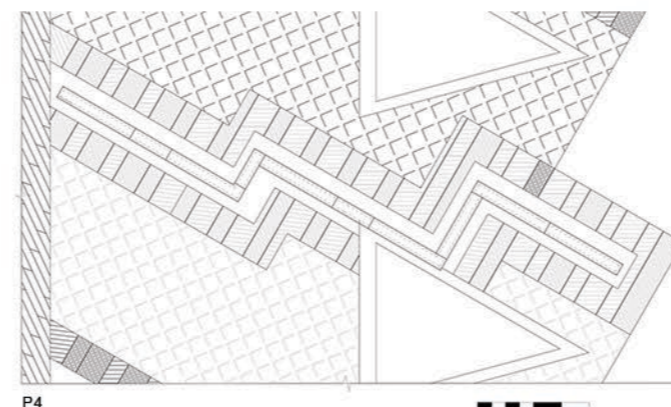
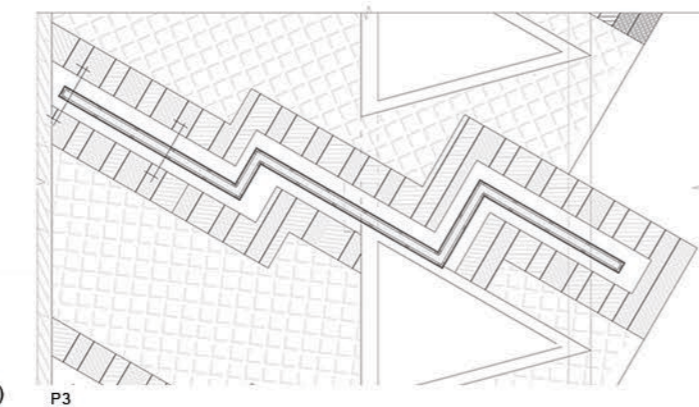
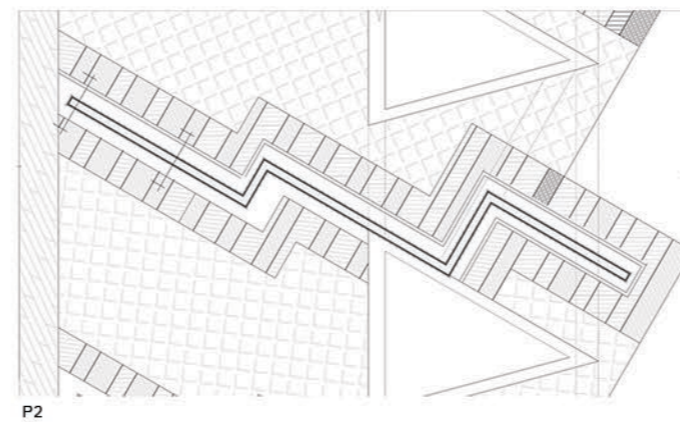
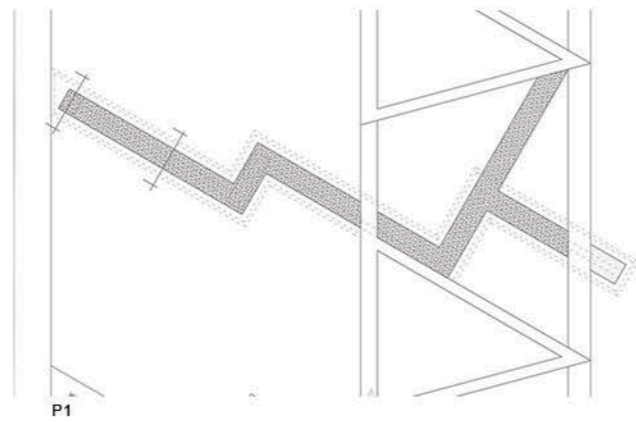
ENTRANCE TO THE MOTIVATIONAL HALL



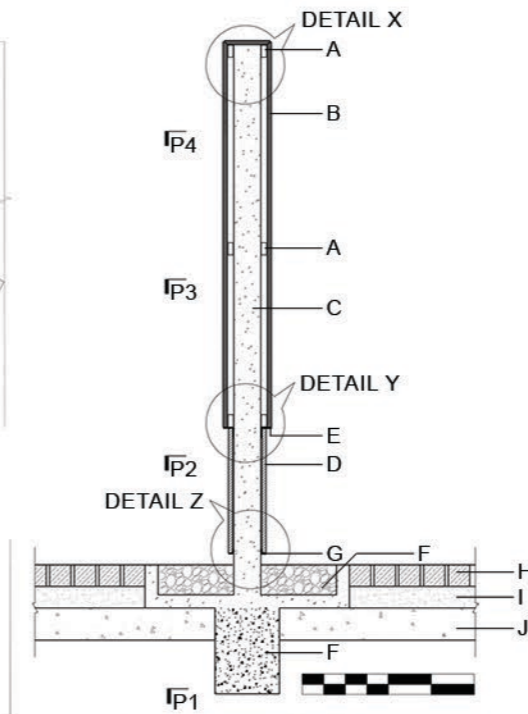
TYPICAL RAILING DETAIL



- A 75 mm dia railing pipe
- B 50 mm dia railing pipe
- C 8mm thick MS plate
- D 300 mm thick RCC retaining wall
- E 8mm thick MS base plate
- F 6mm thick MS plate
- G Galvanized anchor bolt 10 mm dia (Hilti/Fischer)
- H Welded joint
- I Earth outside to foundation level of landscape

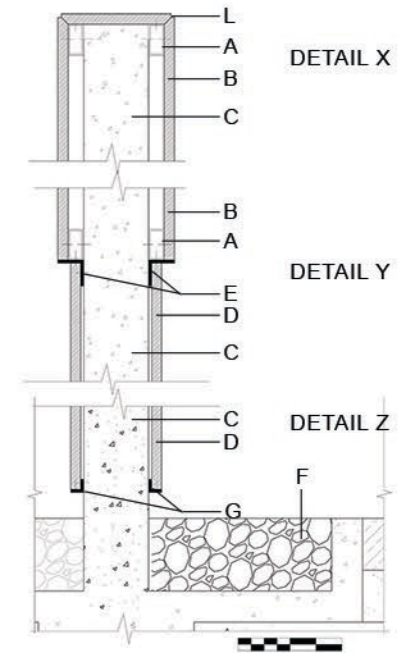


PLAN OF NAME PLAQUE



SECTION THROUGH PLAQUE

- A 60X30X2 mm SS (Stainless steel) 304 grade box section
- B 19 mm thick mirror polished black granite fixed on the framework
- C 125mm thick RCC wall
- D 19mm thick polished white marble fixed on the framework
- E 50x50x4 mm SS L angle
- F River white pebbles



DETAILS

- G 25x25x6 mm SS L angle
- H 100x100x100 thick grey cobble stone to pattern
- I 100 mm thick compacted sand
- J 150 mm thick PCC 1:4:8
- K Beam to structural detail
- L 6x6 mm V groove and joint filled by structural black sealant (3m/equivalent)