



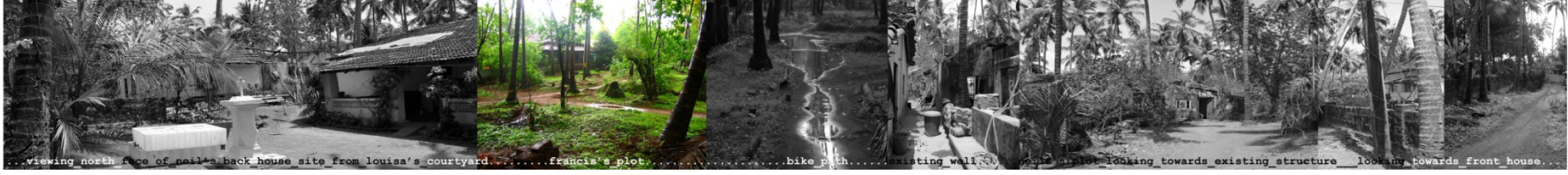
...approaching neil's back house site from bike path of the east.....bike path to the beach.....ralin's plot louisa's west wall.....path through francis's and patrick's plot to neil's site.....bike path...



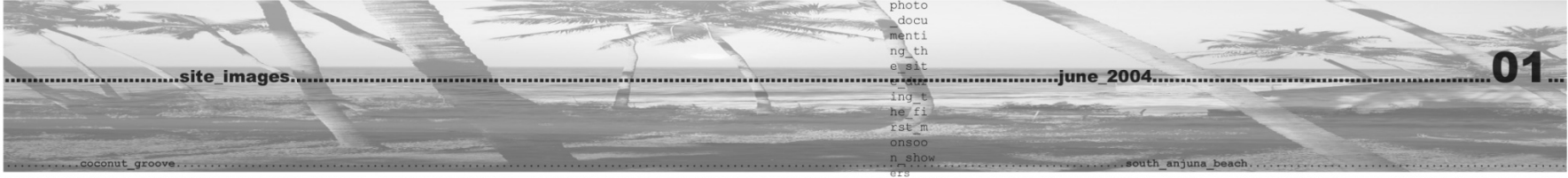
...viewing the east side from coffin path.....viewing east face of neil's back house site from francis's plot with path on the south to neil's plot.....viewing the bike path from coffin path...



...existing water tank and structure.....approaching neil's plot from patrick's plot.....viewing existing well and south face of neil's back house site from patrick's plot...



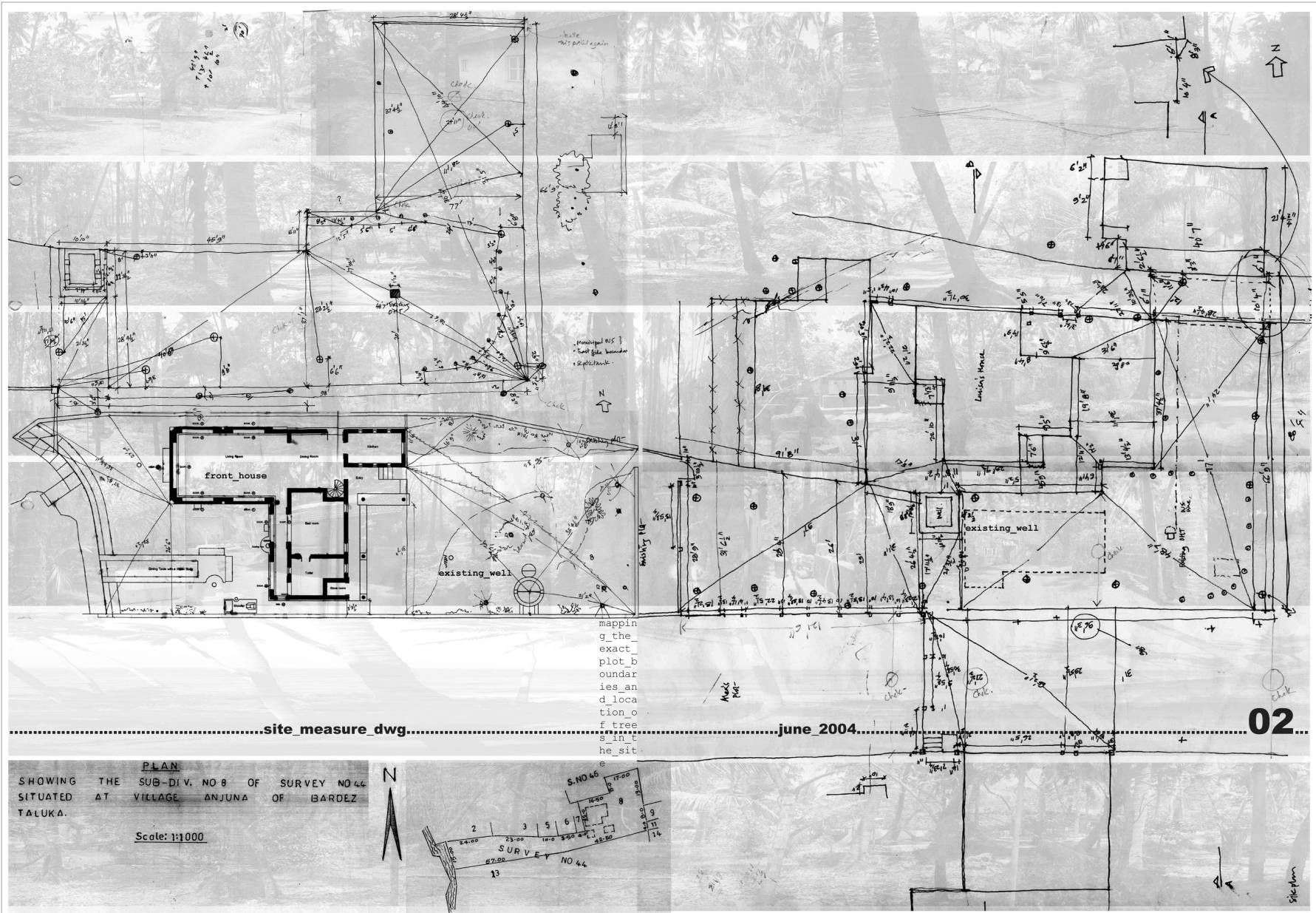
...viewing north face of neil's back house site from louisa's courtyard.....francis's plot.....bike path.....existing well.....looking towards existing structure looking towards front house...



...site images.....june 2004.....01  
photo  
docu  
menti  
ng th  
e sit  
ing t  
he fi  
rst m  
onsoo  
n show  
ers  
coconut grove.....south anjuna beach.



...from north-east.....to south east.....



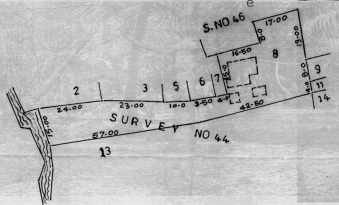
.....site measure dwg.....

.....june 2004.....

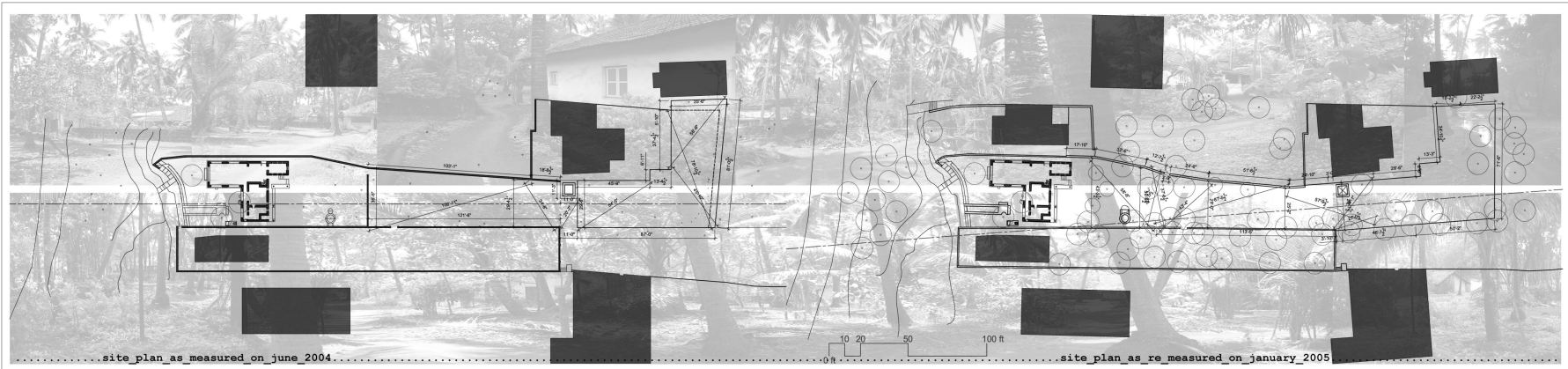
02

PLAN  
 SHOWING THE SUB-DIV. NO 8 OF SURVEY NO 44  
 SITUATED AT VILLAGE ANJUNA OF BARDEZ  
 TALUKA.

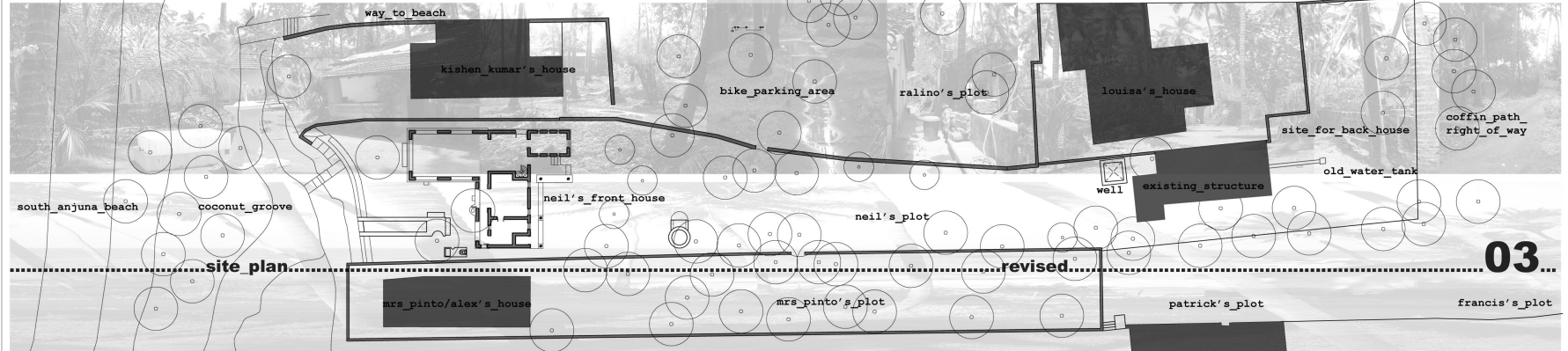
Scale: 1:1000



Site Plan



re dra  
wing t  
he com  
plete  
site w  
ith ne  
ighbour  
ing pl  
ots an  
d bound  
aries

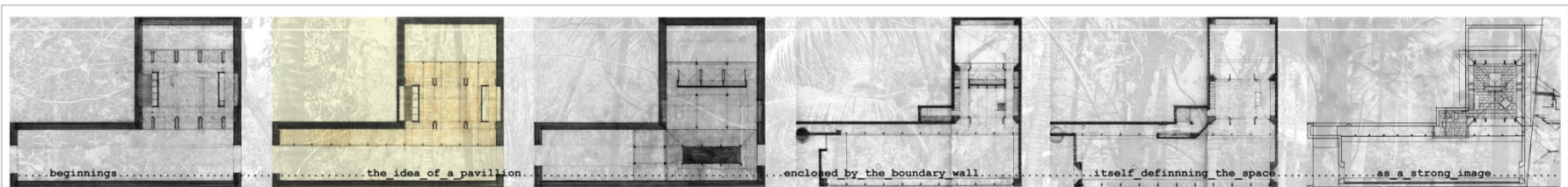


**03**



xavier's sister's house

patrick's house



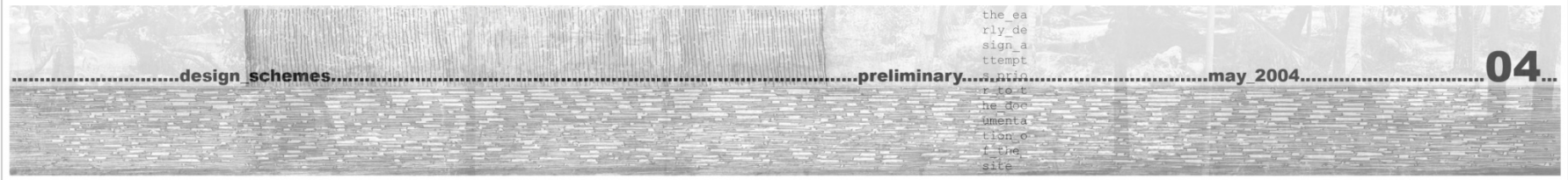
beginnings

the idea of a pavilion

enclosed by the boundary wall

itself defining the space

as a strong image



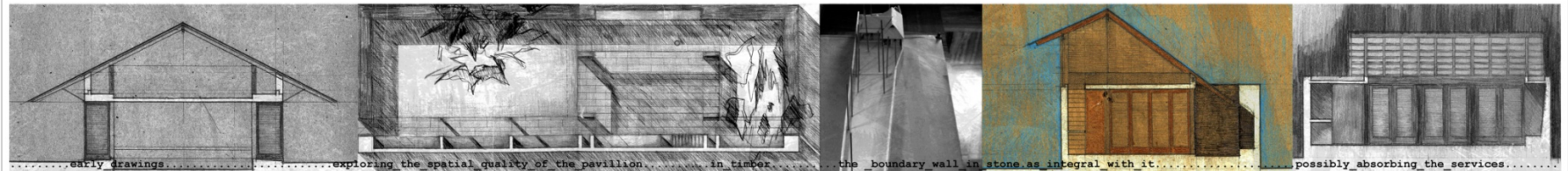
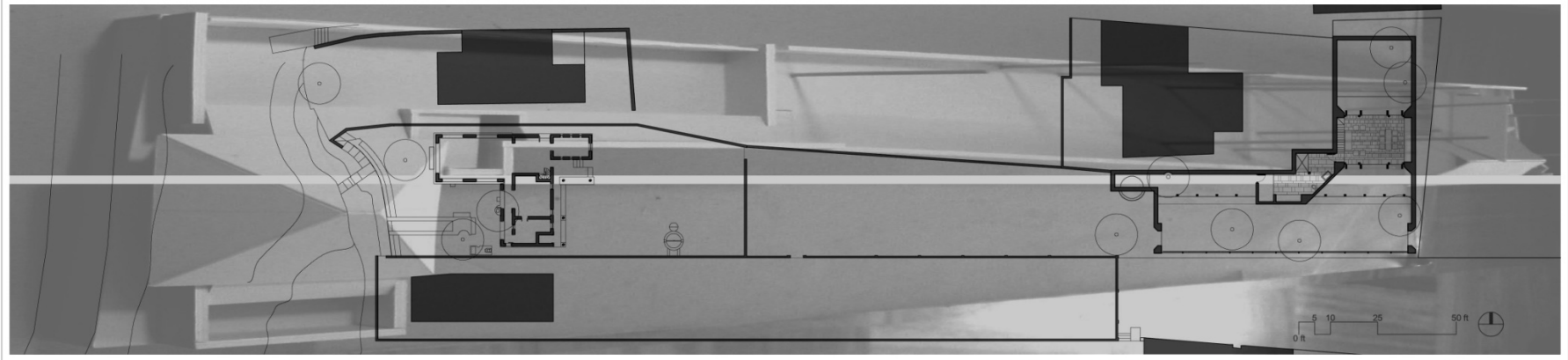
design schemes

preliminary

may 2004

04

the early design attempt  
the documentation of the site



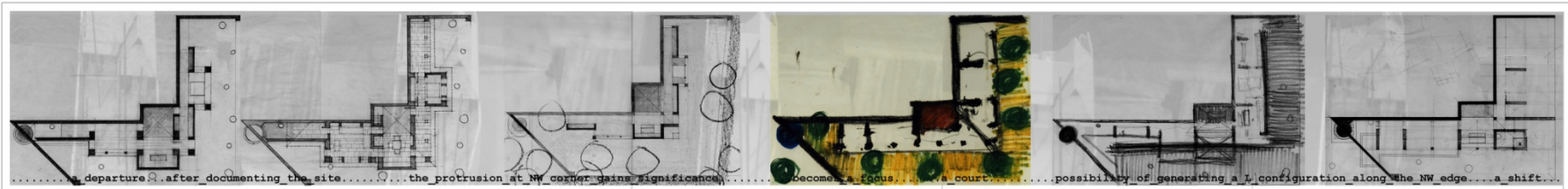
early drawings

exploring the spatial quality of the pavilion in timber

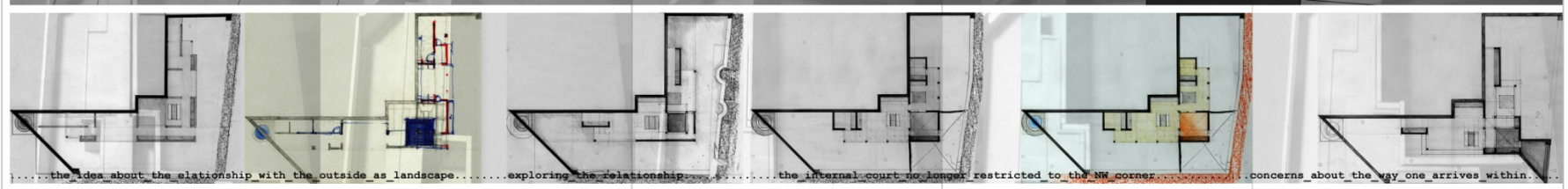
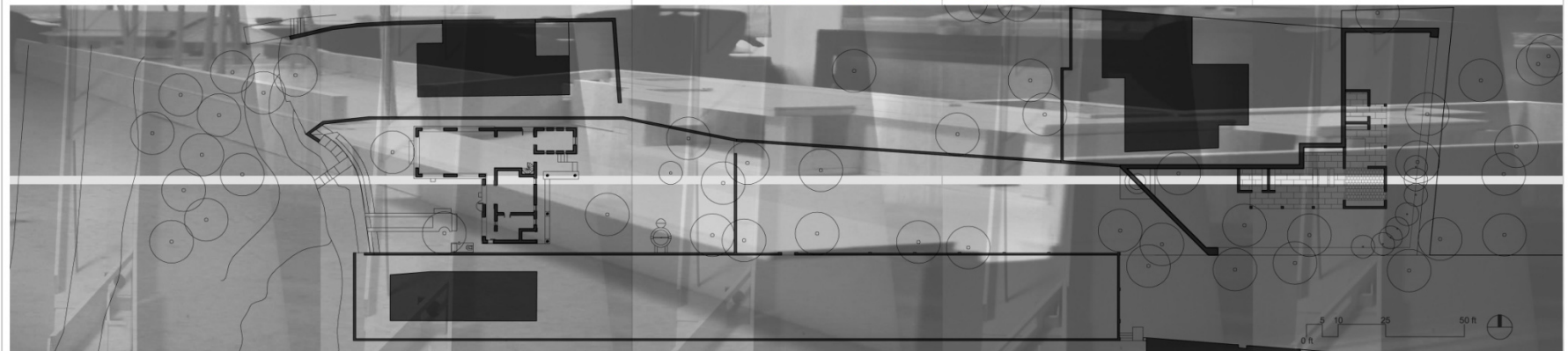
the boundary wall in stone as integral with it

possibly absorbing the services





..... a departure after documenting the site ..... the protrusion at NW corner gains significance ..... becomes a focus ..... a court ..... possibility of generating a L configuration along the NW edge ..... a shift.....



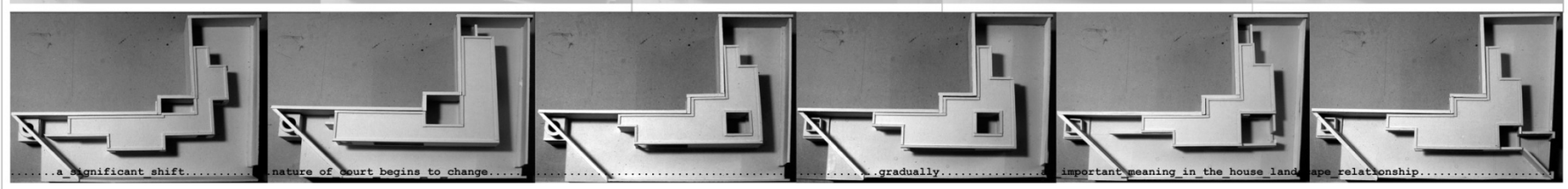
..... the ideas about the relationship with the outside as landscape ..... exploring the relationship ..... the internal court no longer restricted to the NW corner ..... concerns about the way one arrives within.....



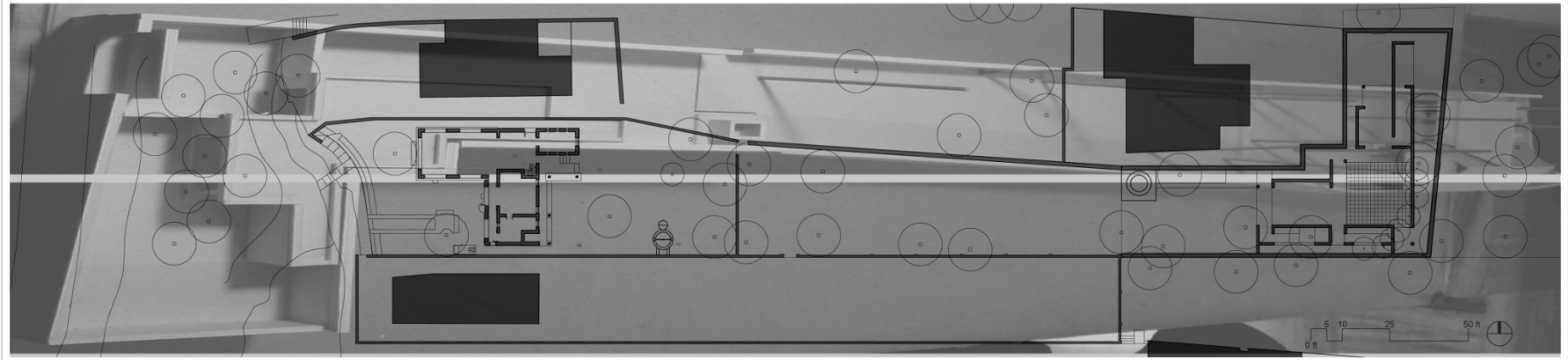
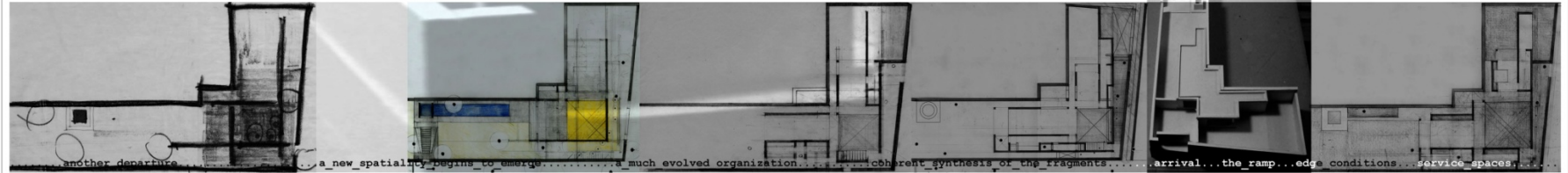
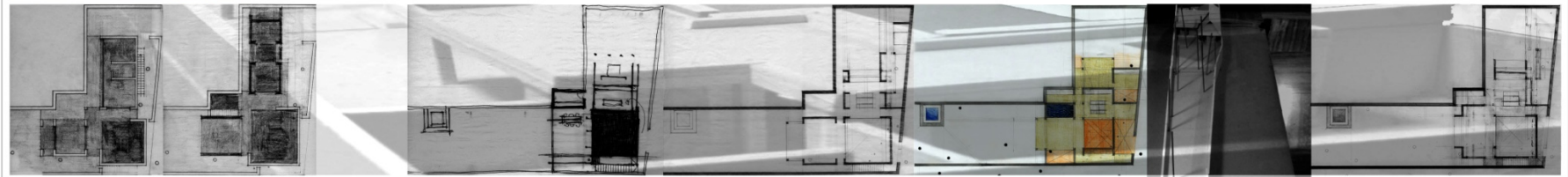
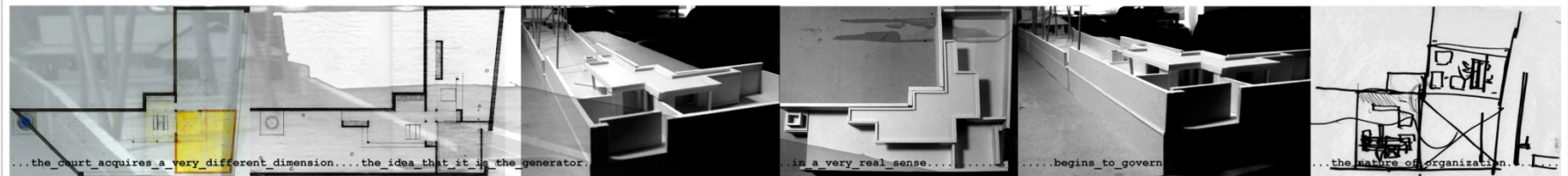
..... design schemes.....

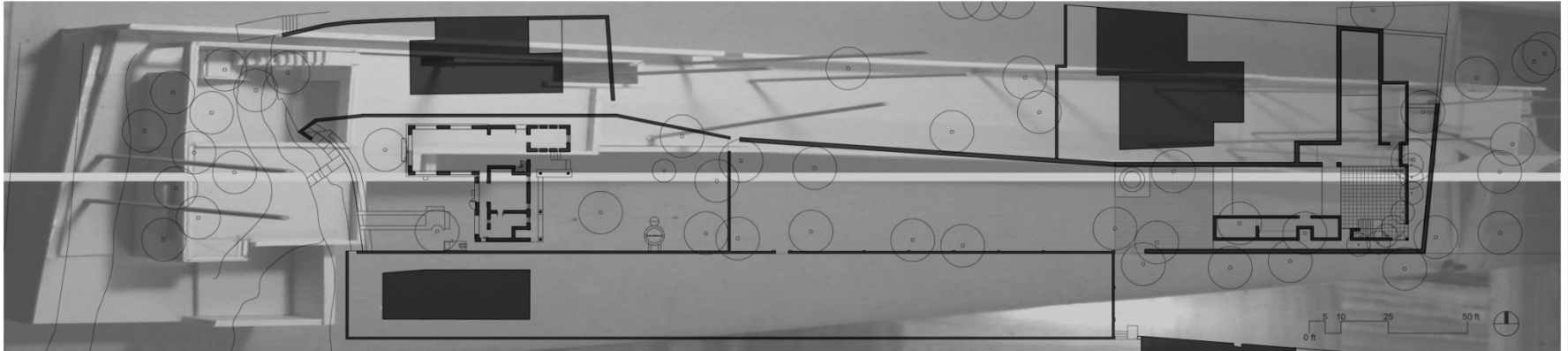
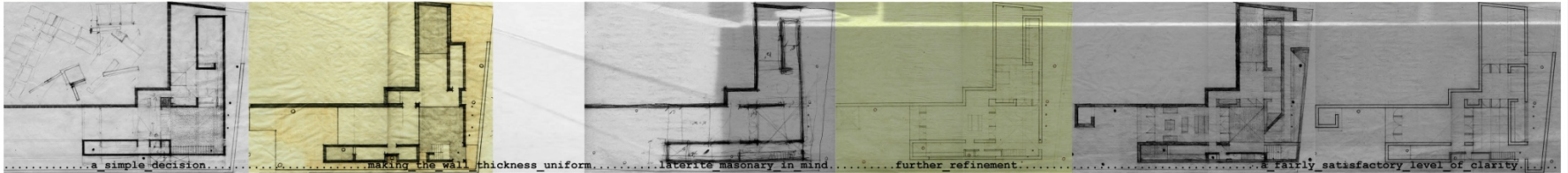
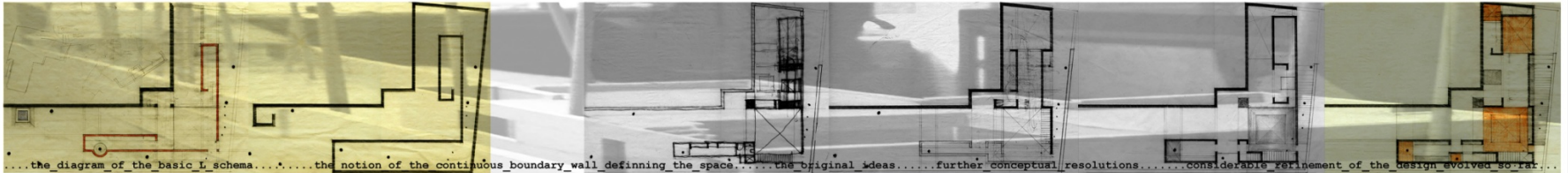
..... june 2004.....

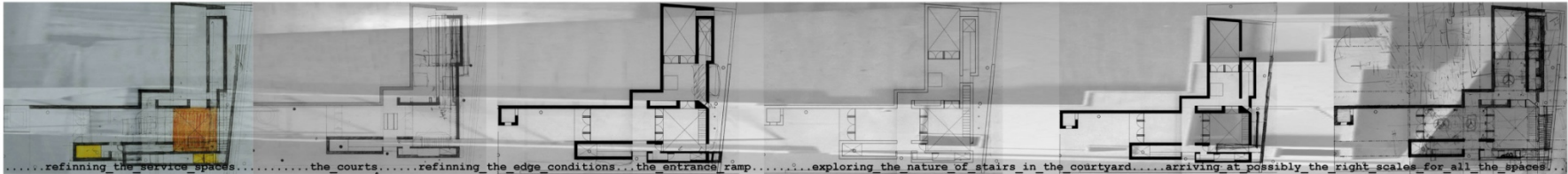
**05**



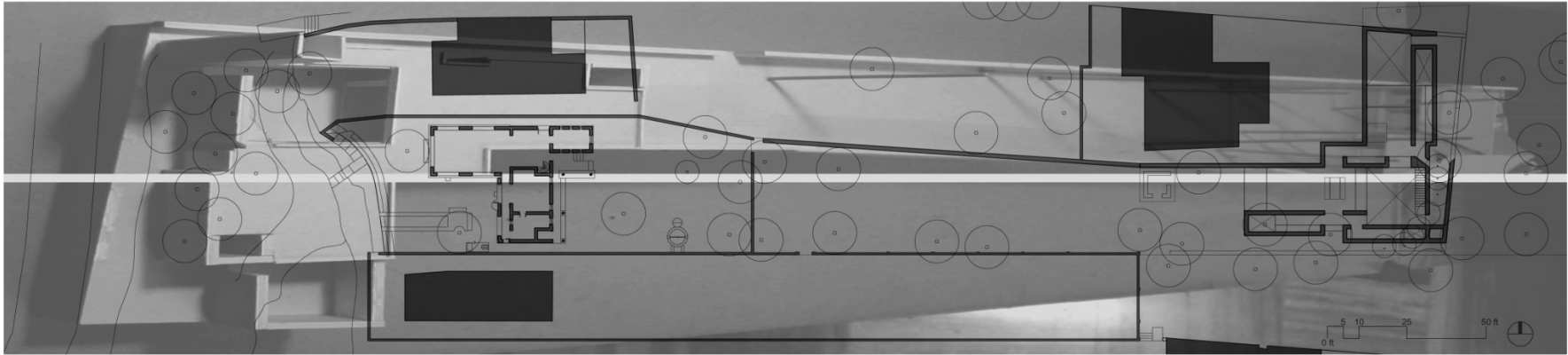
..... a significant shift ..... nature of court begins to change ..... gradually ..... important meaning in the house landscape relationship.....







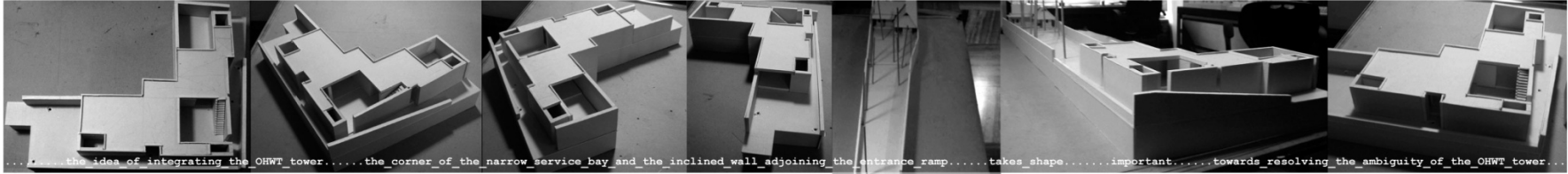
.....refining the service spaces.....the courts.....refining the edge conditions...the entrance ramp.....exploring the nature of stairs in the courtyard.....arriving at possibly the right scales for all the spaces...



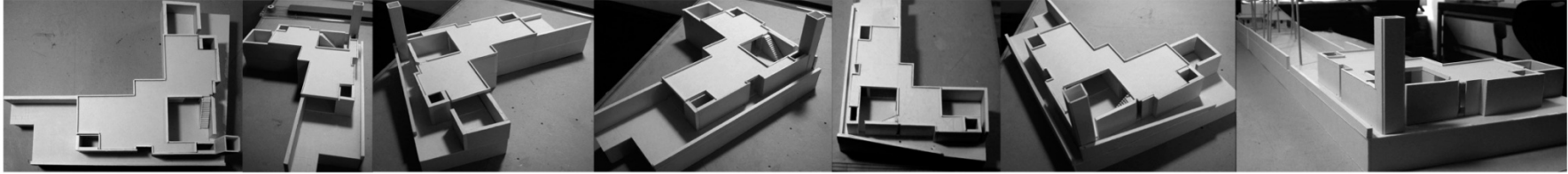
.....design schemes.....

.....july 2004.....

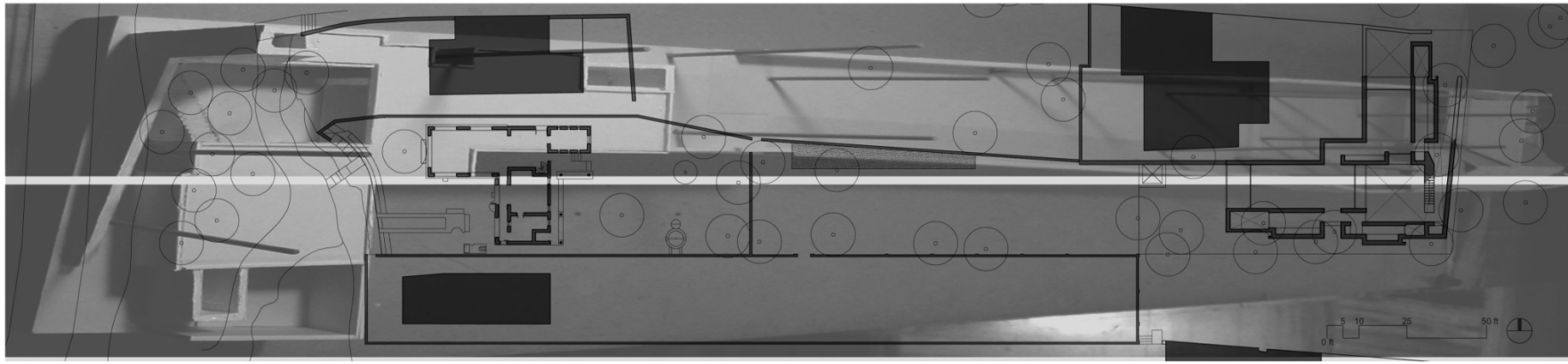
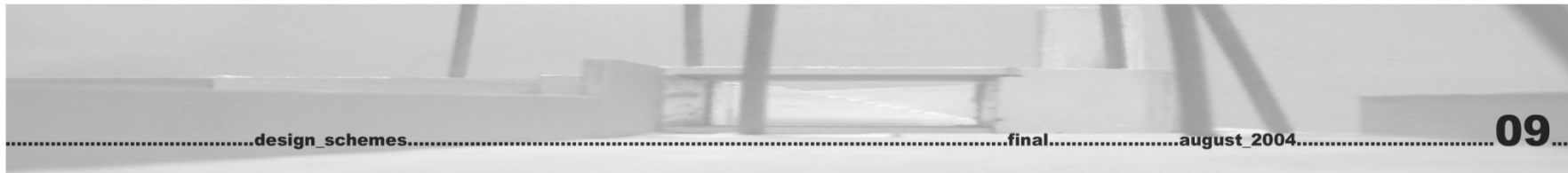
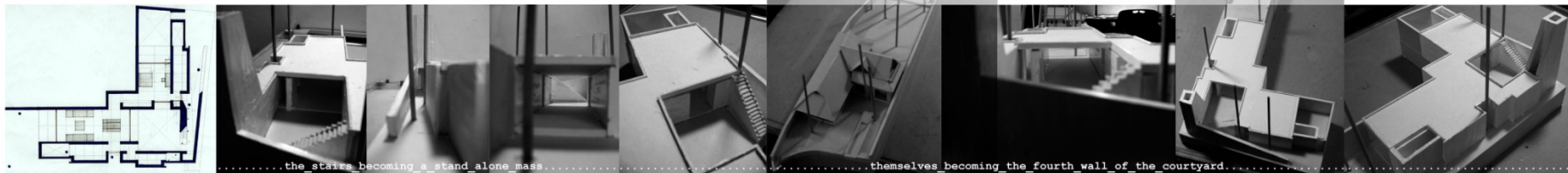
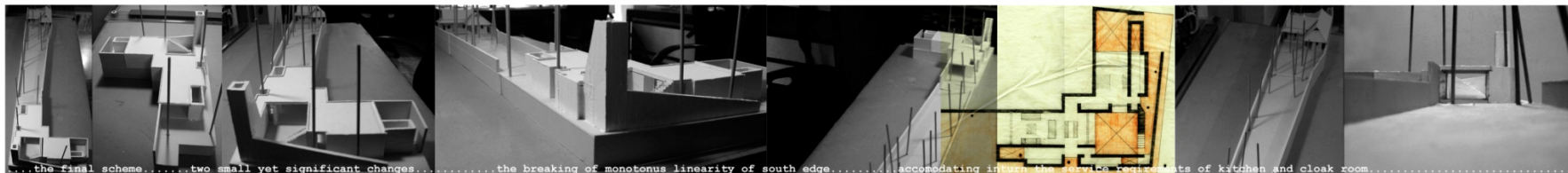
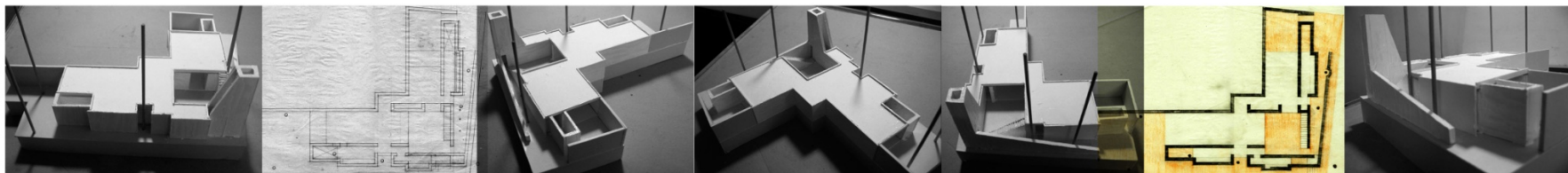
**08**

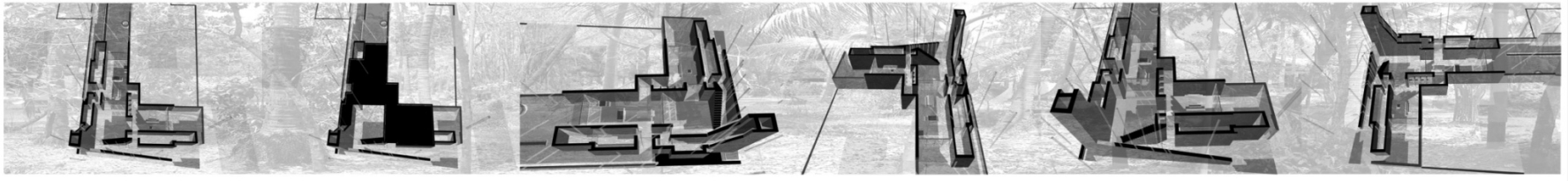
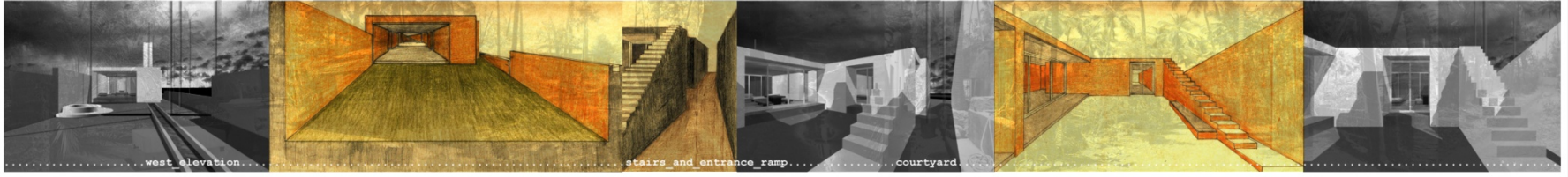
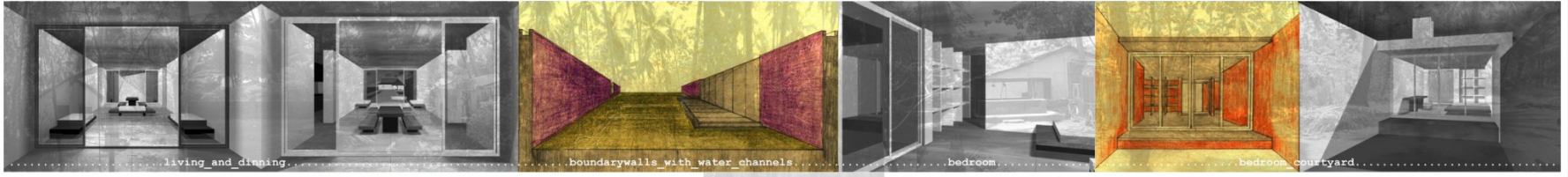
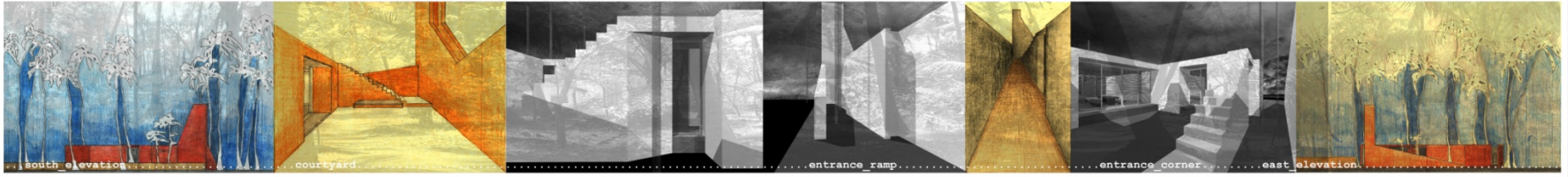
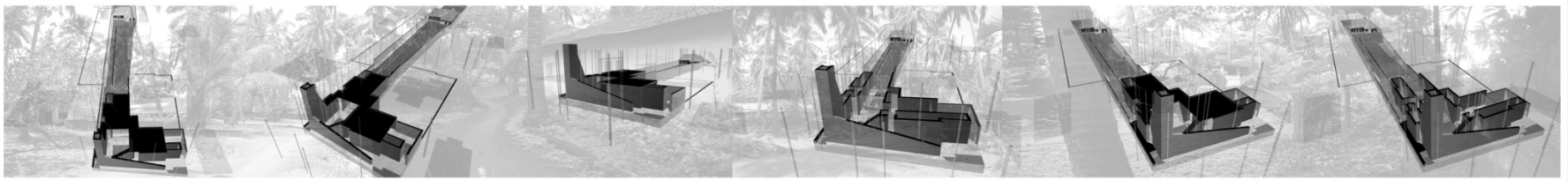


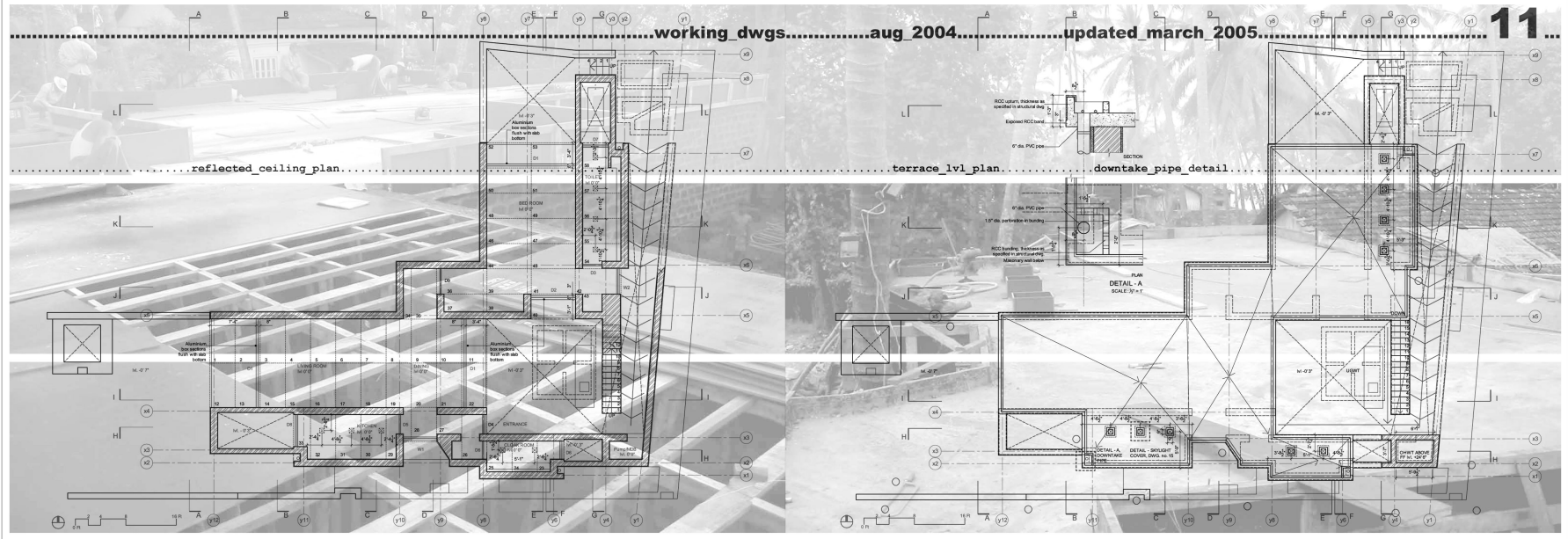
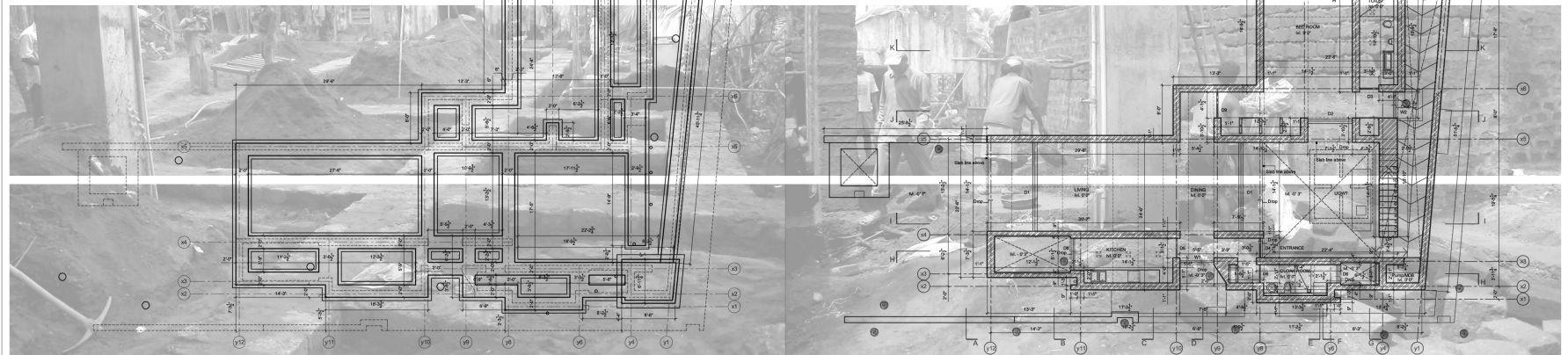
.....the idea of integrating the OHWT tower.....the corner of the narrow service bay and the inclined wall adjoining the entrance ramp.....takes shape.....important.....towards resolving the ambiguity of the OHWT tower...













.....excavation\_and\_foundation.....august\_2004.....

excavating the site for foundations with the help of especially made foundation drawings

12...





constru  
cting t  
he wall  
s with  
single  
block l  
ocal la  
terite  
over a  
damp pr  
of cou  
rse  
kaddapa









.....casting the RCC slab.....

laying of  
reinforce-  
ments  
.....  
pouring  
of concrete  
mix from  
concrete  
mixer.....  
compaction  
with  
machine

.....oct 2004.....

16



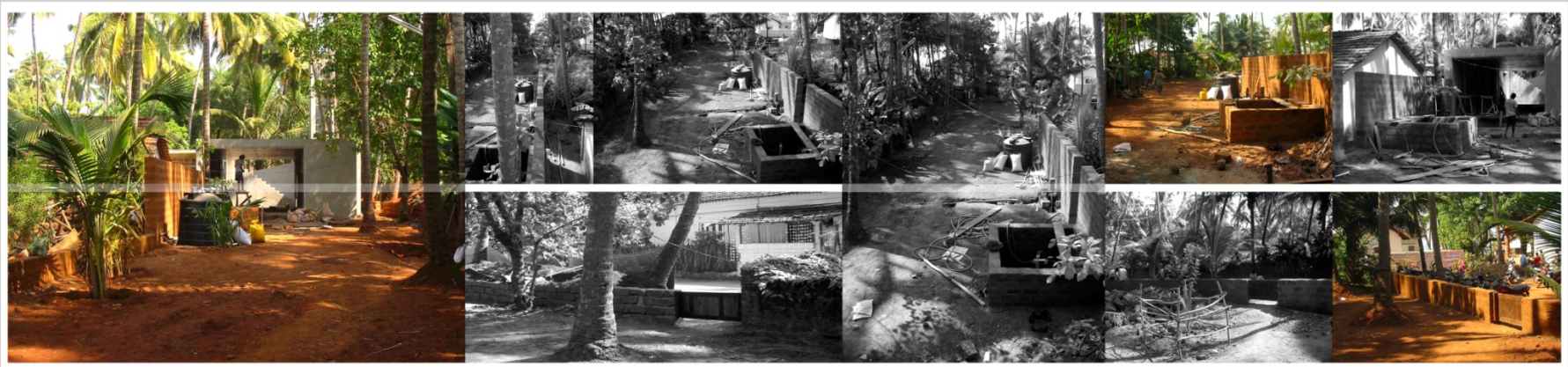




after de-  
shutter-  
ing.....  
plasterin  
g the ext  
ernal wal  
l surface  
+ with do  
uble coat  
cement p  
laster an  
d interna  
l with si  
ngle coat

.....curing of slab.....+.....external+internal plastering.....+.....external paint samples.....nov 2004.....

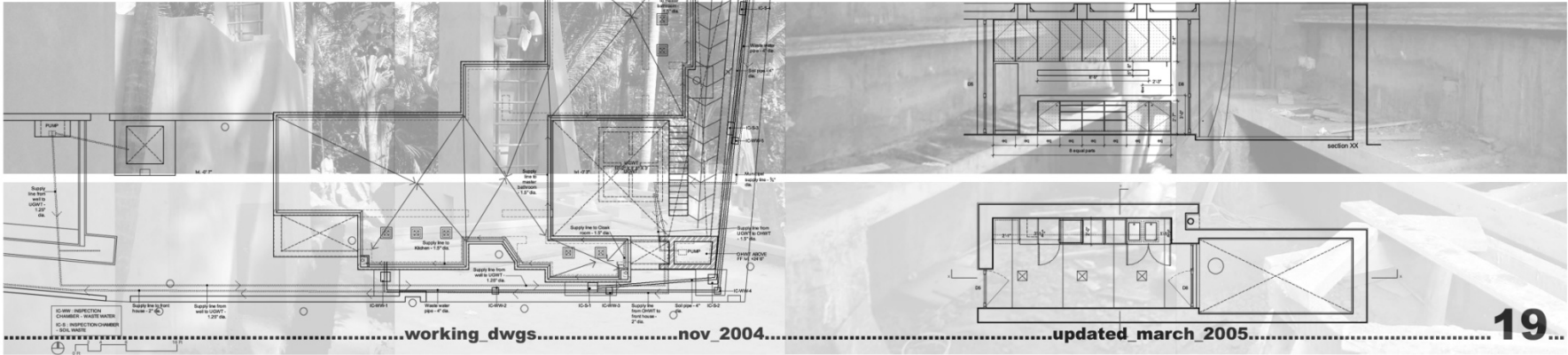
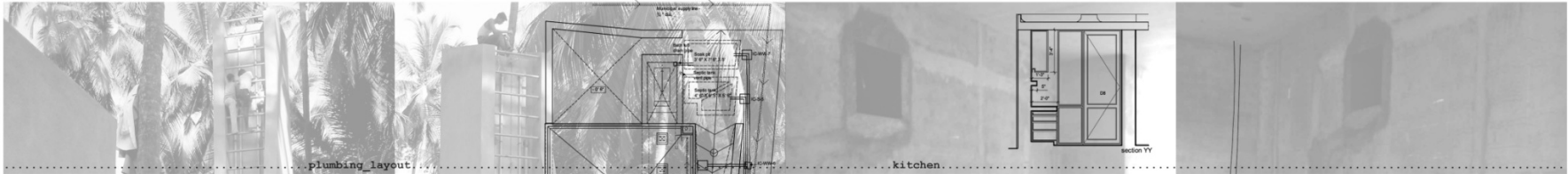




rebuildi  
ng the e  
xisting  
well and  
\_ buildin  
g the bo  
undary w  
alls...  
starting  
\_ the ext  
ernal in  
ternal p  
ainting

.....boundary\_walls+well.....+.....external\_plumbing.....+.....internal\_neeru\_finish.....+.....external\_painting\_1st\_coat.....dec\_2004..... **18**.....







.....courtyard+external paving.....+.....external+internal painting final coat.....+.....plywood furniture.....

completing the final coat of paint.....dec 2004.....20.....

paving the courtyards stairs and entrance ramp..... recycling the shuttering ply for making furniture.....





.....external paving+landscaping.....+.....IPS floor+dado.....+.....plywood furniture.....

laying the external paving continuing till front house.....  
 completing the IPS flooring and dado in bathrooms and kitchen

.....jan 2005.....

**21**





.....land levelling+water channels.....+.....plywood shutters.....+.....aluminium doors+skylights.....

filling and  
levelling  
the land and  
making wa-  
ter channel  
s.....  
the assem-  
bly and erect-  
ion of alum-  
inium shut-  
ters and sk-  
ylight glas-  
s covers

.....jan 2005.....





... walking from the veranda of front house ..... looking towards the landscape ..... walking past the gate ..... towards the new house ..... along the main water channel .....



... across the mud filled ground ..... then looking back ..... and then back again viewing the west face ..... the well ..... the forecourt ..... the living room and the south face from the forecourt .....



... moving across the second gate on the south edge ..... viewing the south face ..... the OHWT tower ..... moving further ..... looking back ..... and up ..... from the foot of the tower ..... receding back to view the east face .....



..... images as built ..... feb 2005 .....



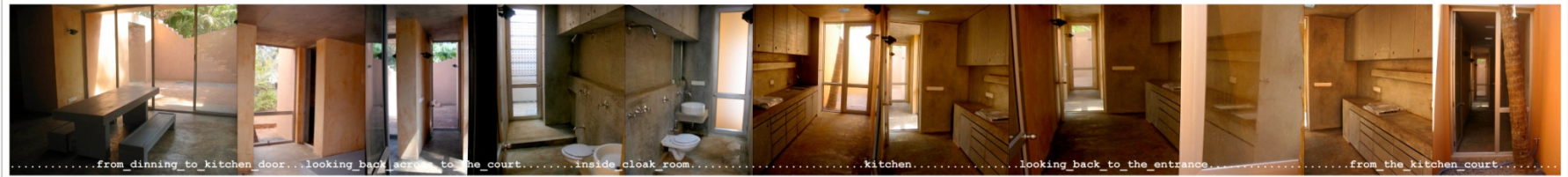
... moving along the inclined wall ..... the entrance ramp ..... proceeding along the ramp ..... looking back from the steps ..... the arrival in the court ..... viewing the living dining ..... and across to the wall .....



... looking across living dining from the steps ..... then across the bedroom ..... to the back court ..... turning around ..... the steps ..... the entrance ..... and the OHWT tower .....



...entrance...kitchen courtyard across...entering the living dining...looking out across to the front house...dinning space...looking into the courtyard...the opening on south...



.....from dinning to kitchen door...looking back across to the court...inside cloak room...kitchen...looking back to the entrance...from the kitchen court...



...approaching the bedroom door...looking across the east window...the door to the courtyard...turning back...the wardrobe...moving further back...looking across to the front courtyard...then to the back court from inside...



.....from the back court...looking across the bedroom...turning at the robe...into the master bathroom...and the open shower space...



images as built

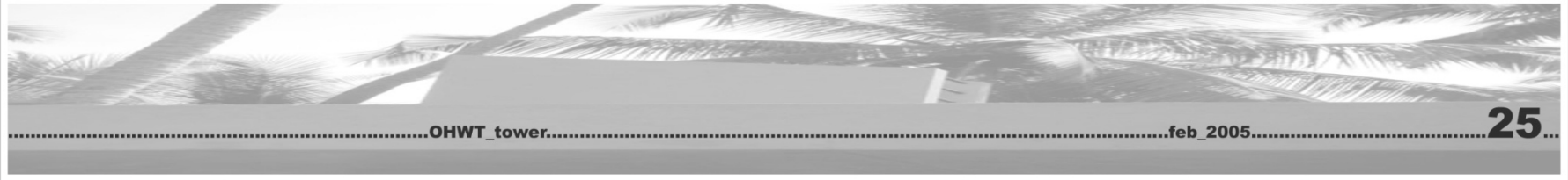
feb 2004

24



.....climbing the stairs...to the terrace...over the bedroom...and over the living room...the kitchen skylights...looking at the courtyard...and the OHWT tower...



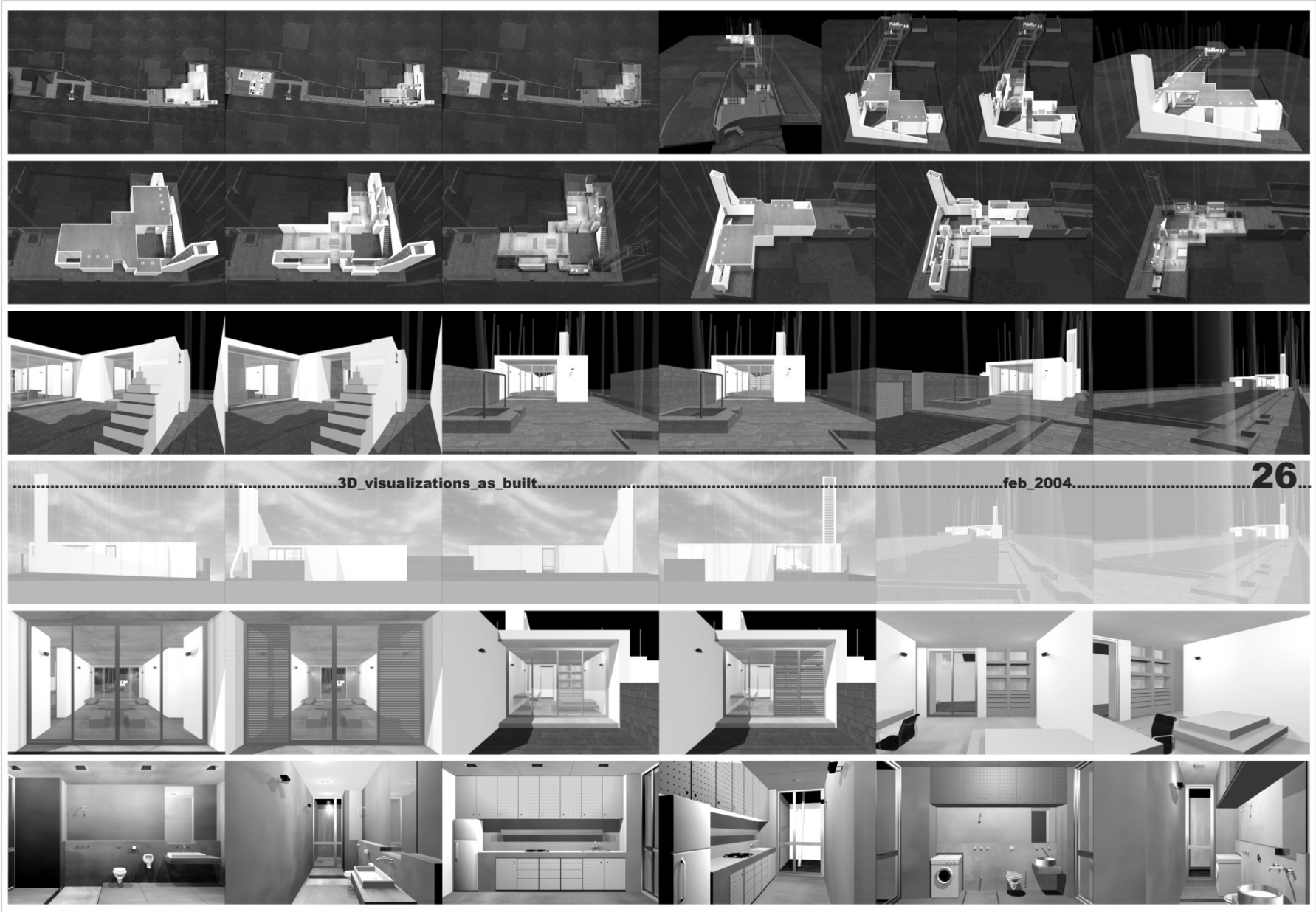


.....OHWT\_tower.....

.....feb\_2005.....

**25**





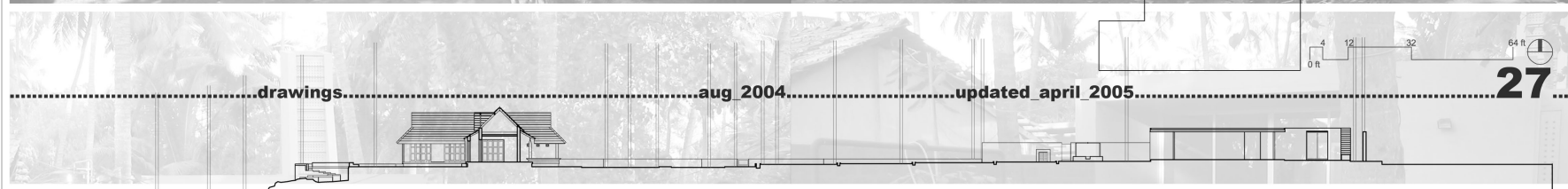
...3D visualizations as built...

feb 2004...

26



site plan



drawings

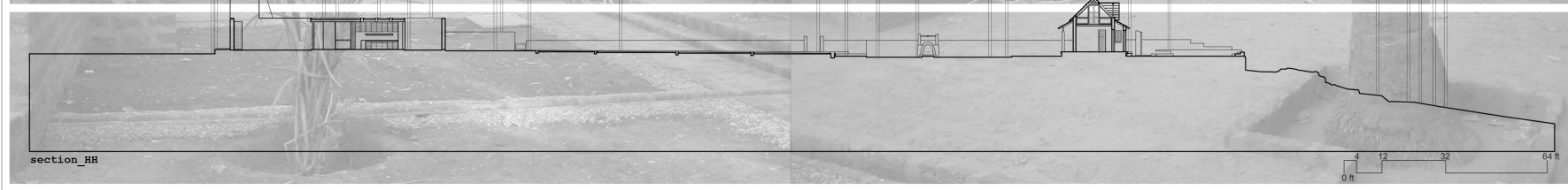
aug 2004

updated april 2005

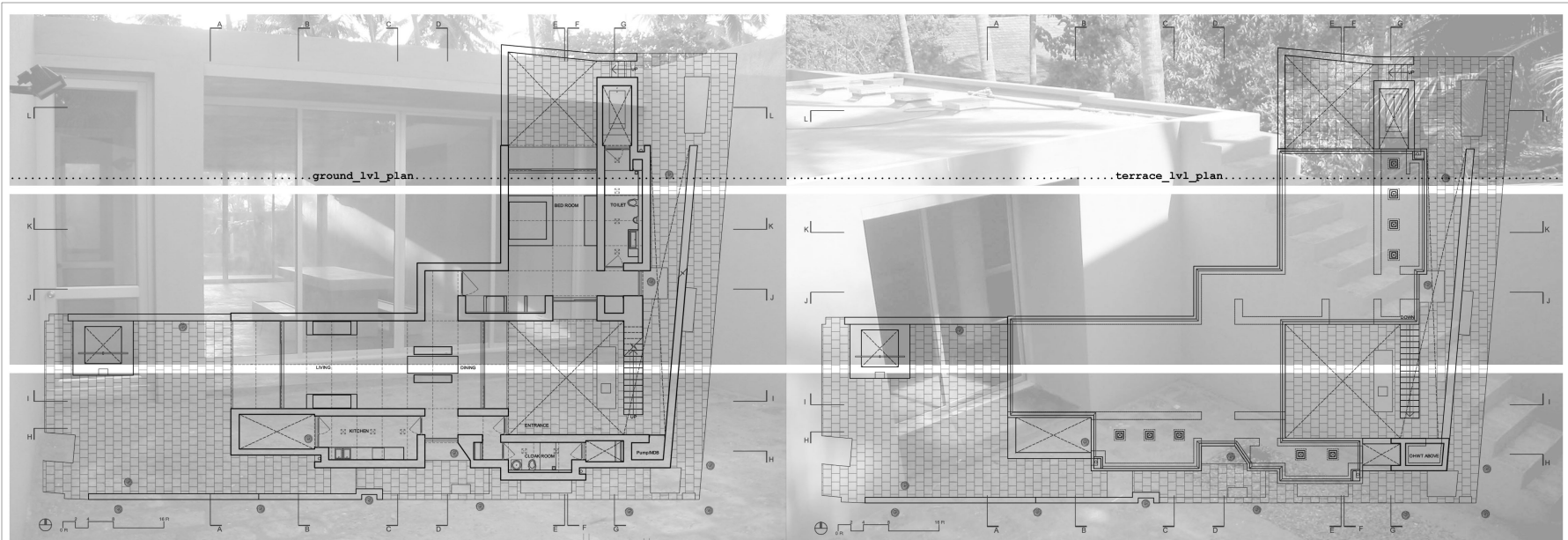
27



section\_II



section\_HH

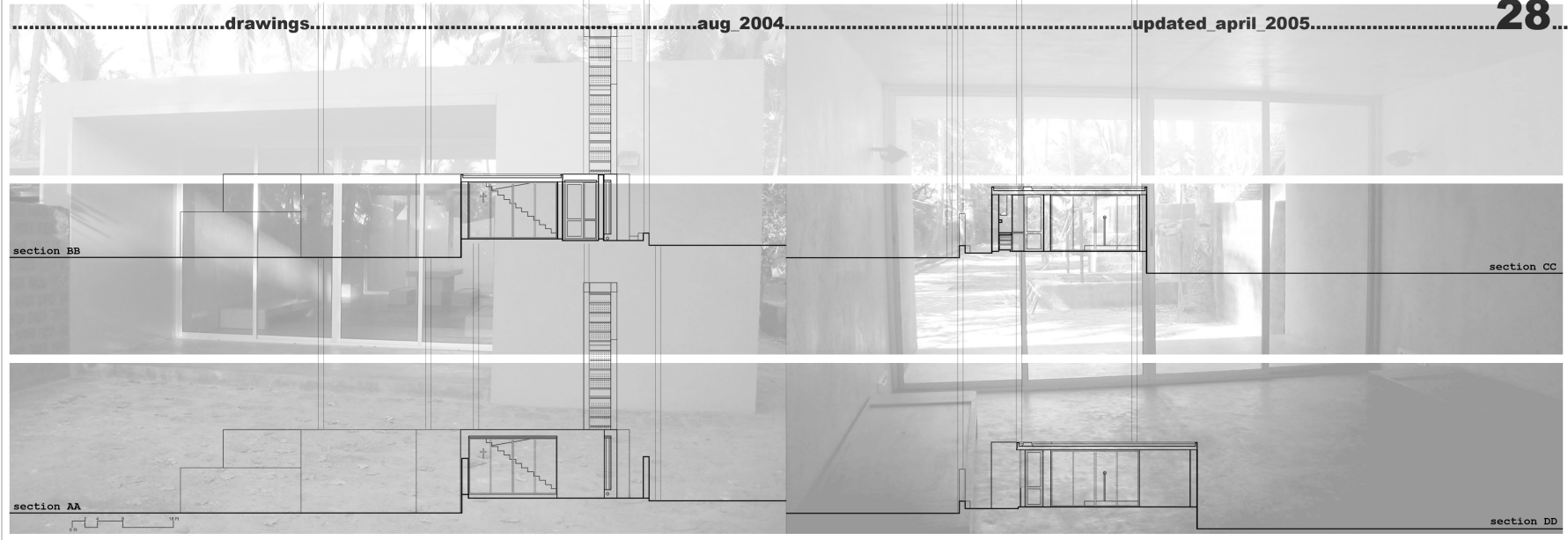


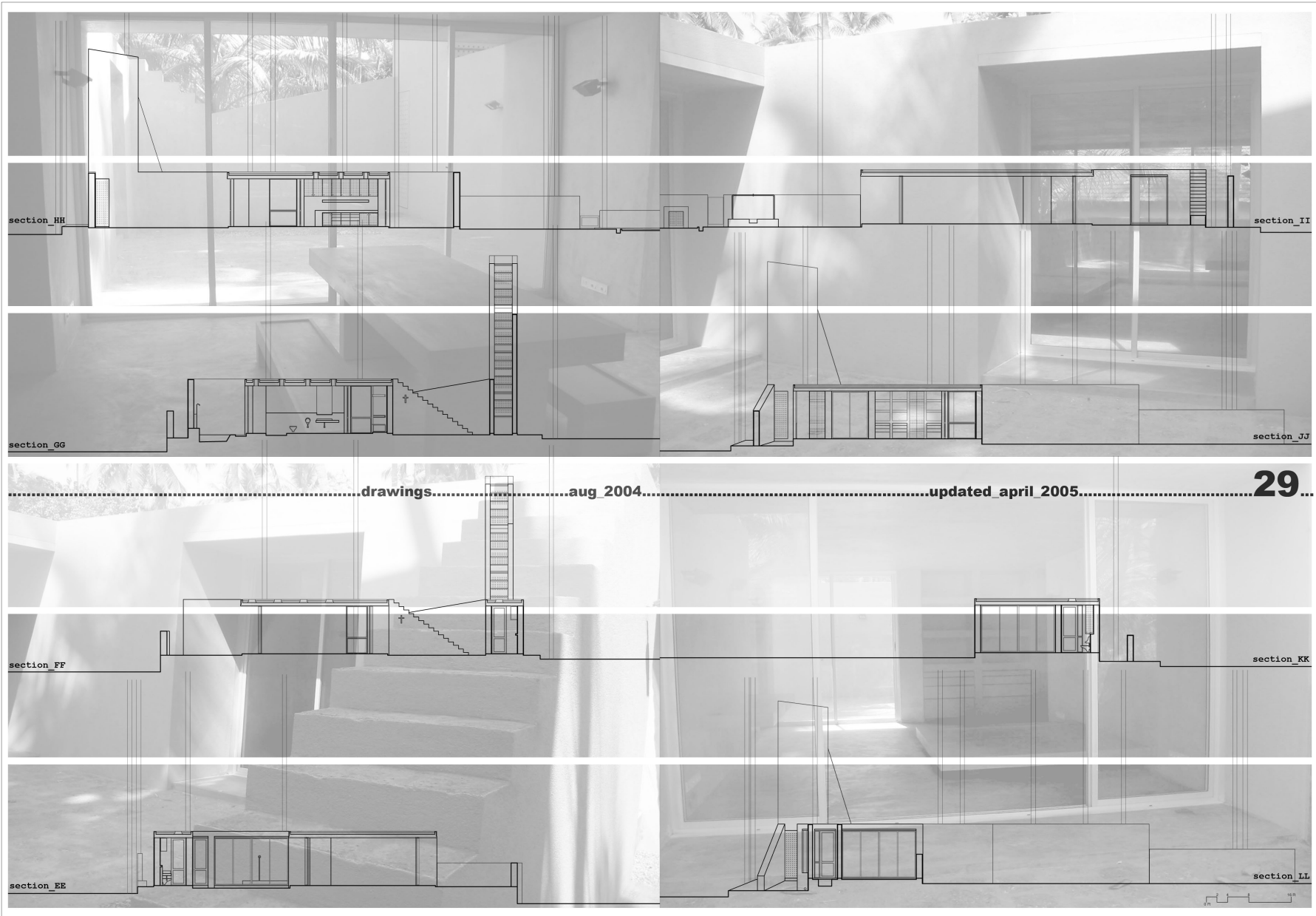
drawings

aug 2004

updated april 2005

28





section\_HH

section\_II

section\_GG

section\_JJ

drawings.....aug 2004.....updated april 2005.....

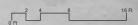
29

section\_FF

section\_KK

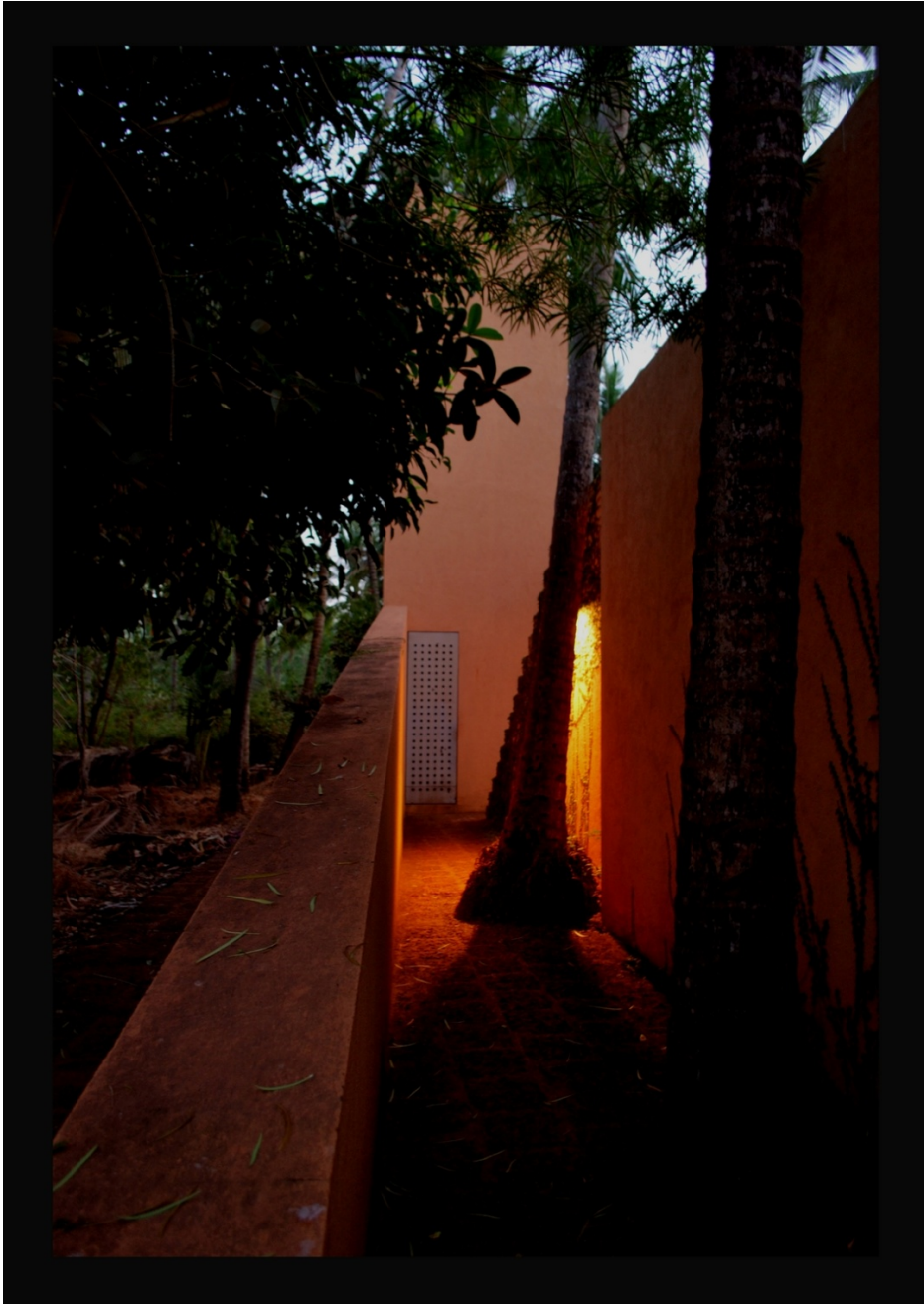
section\_EE

section\_LL

























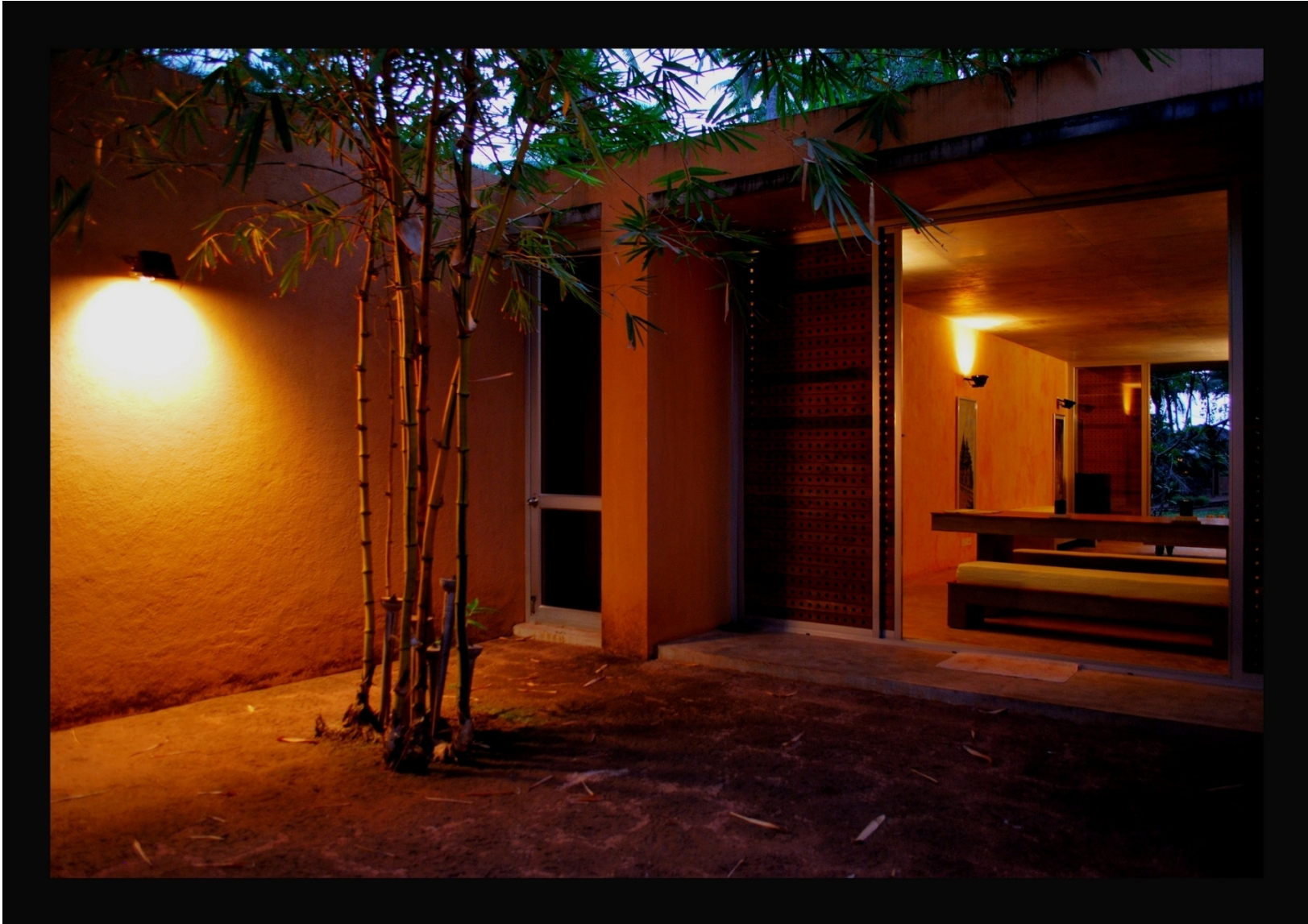




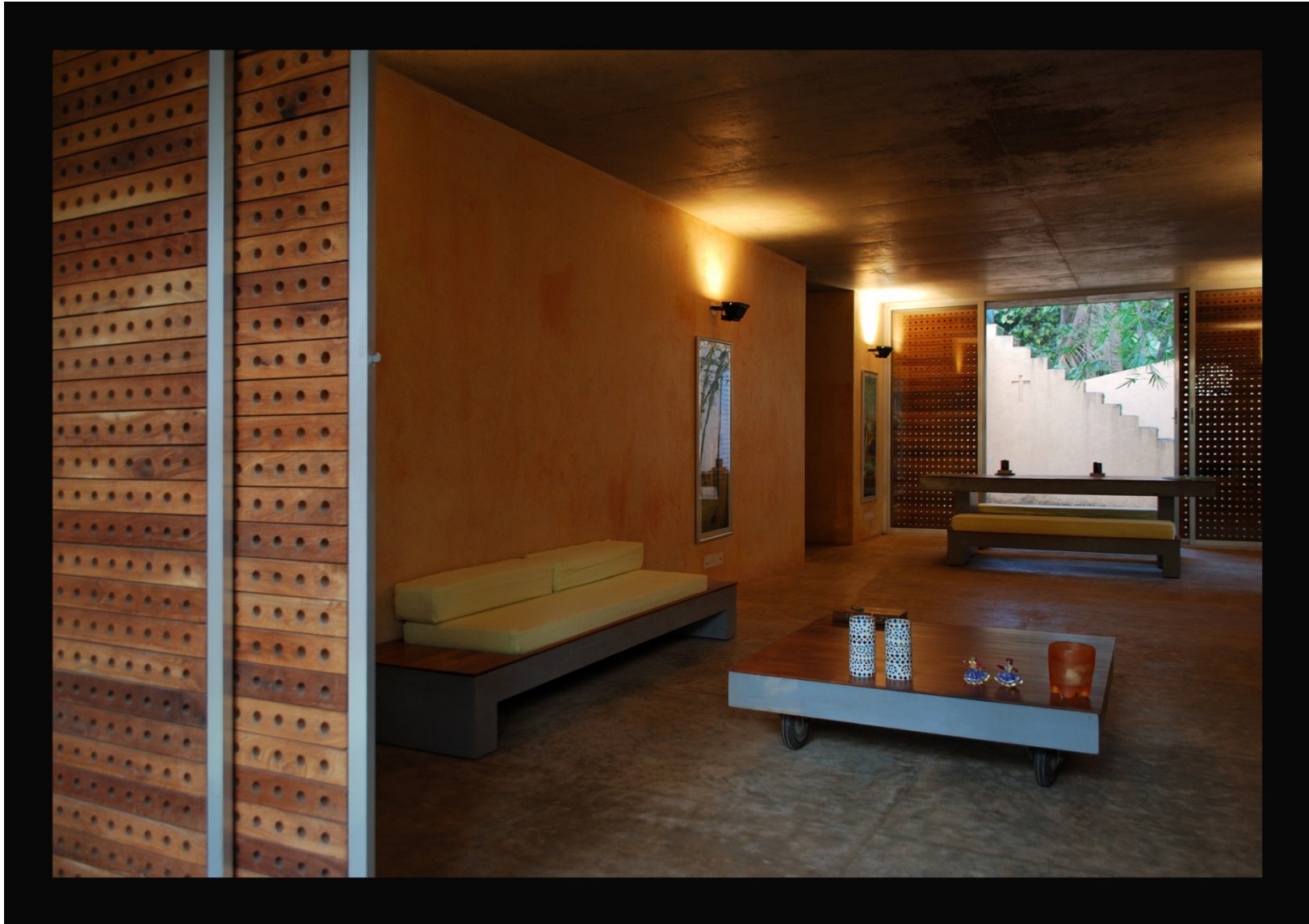




























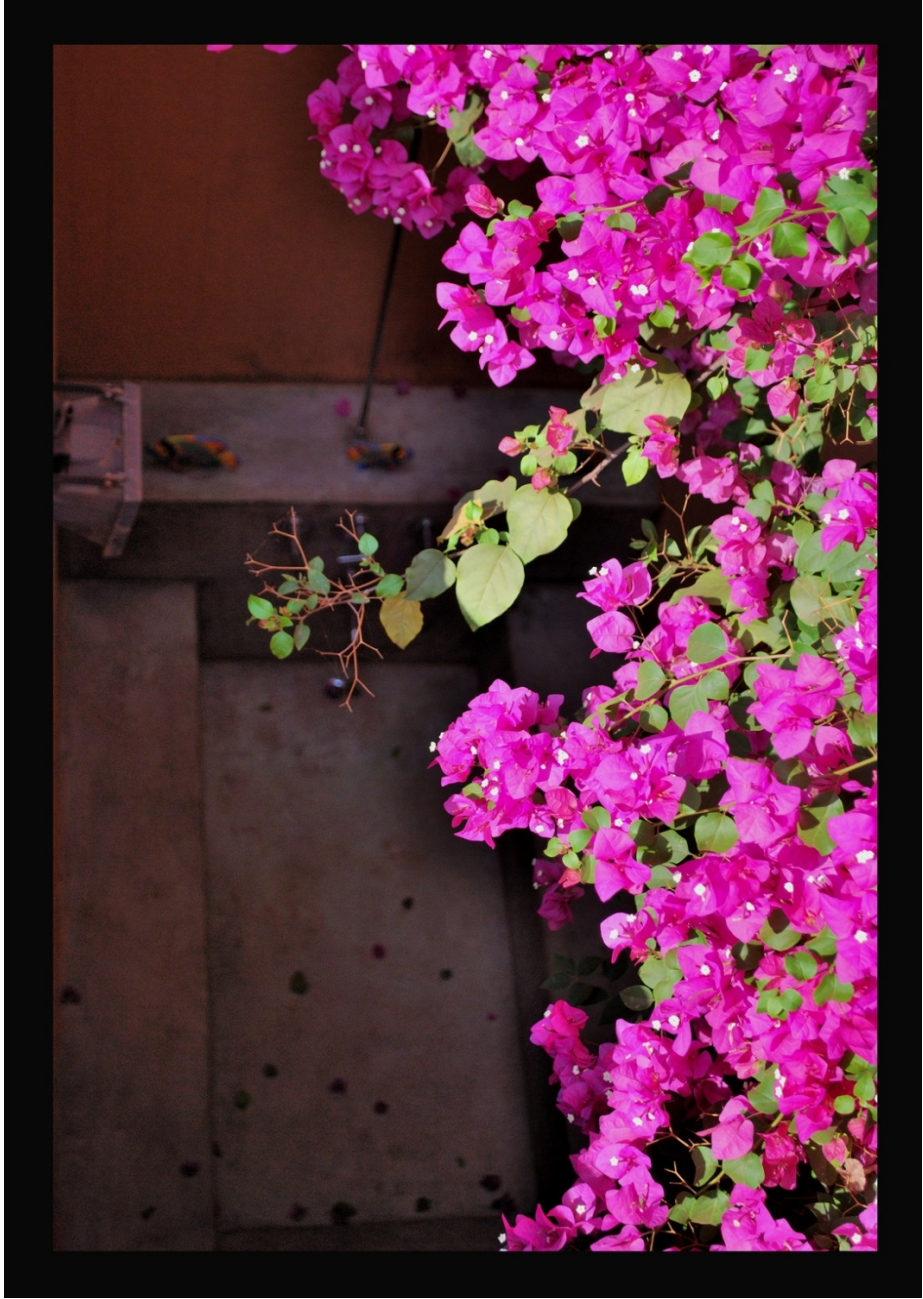


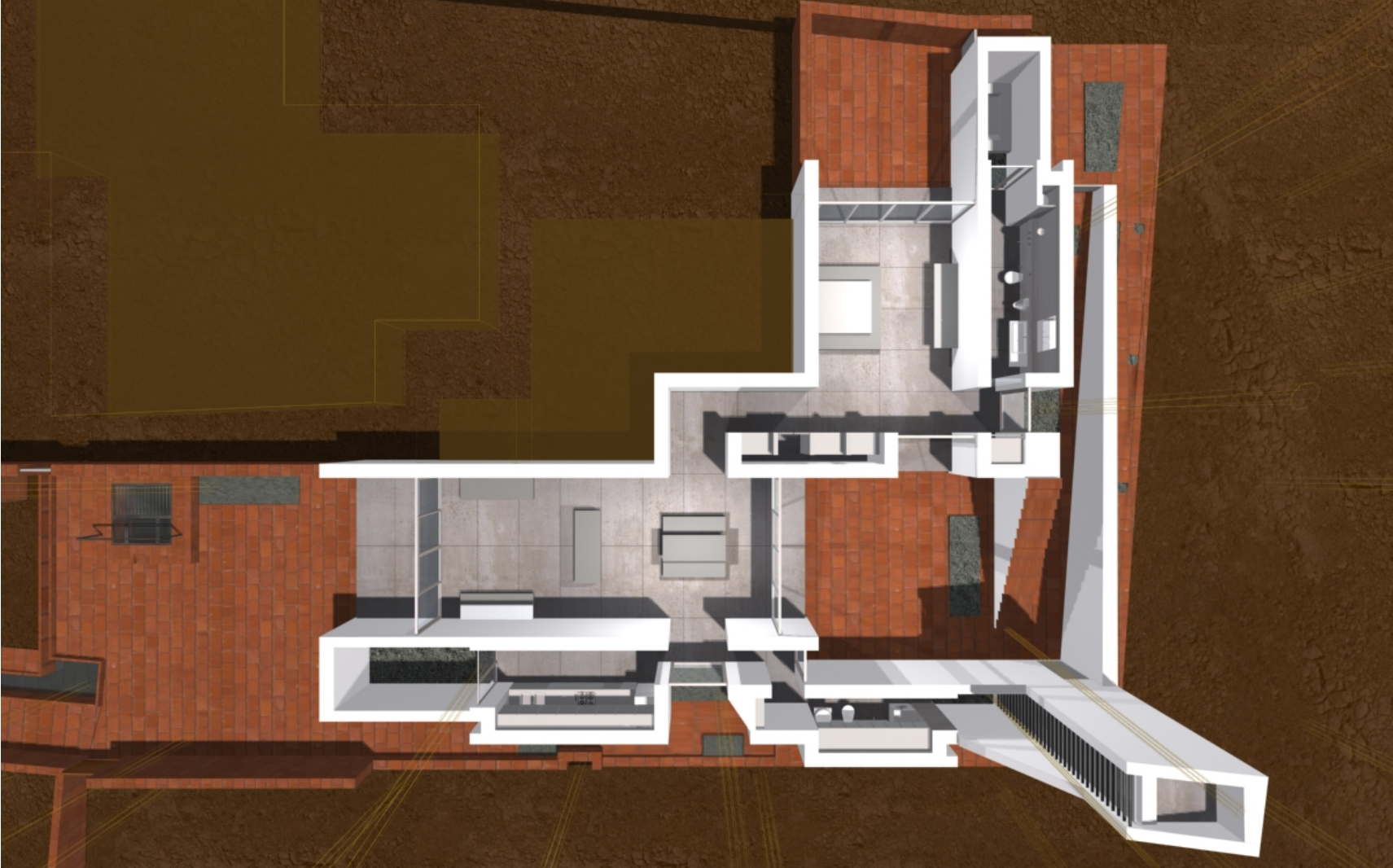


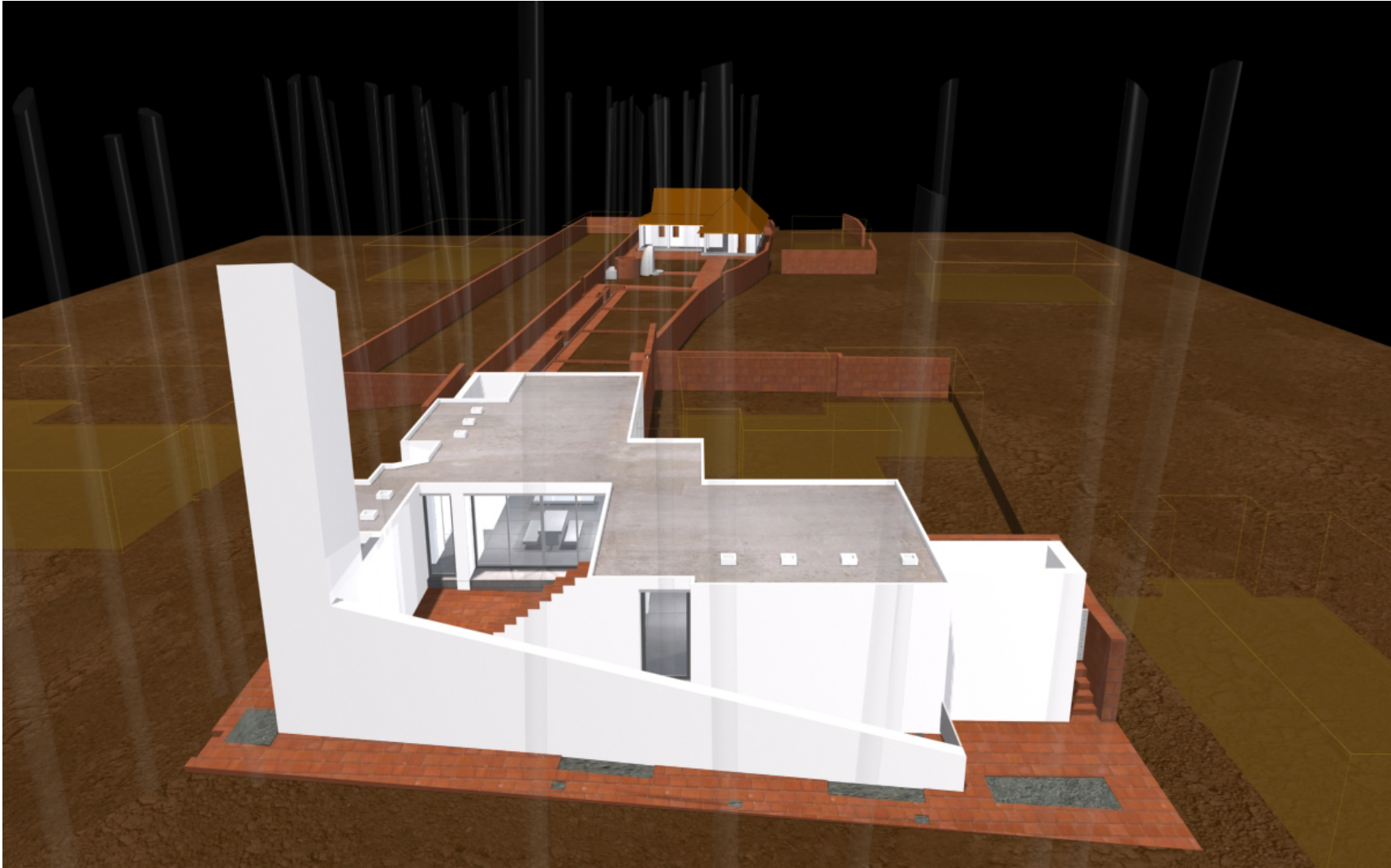


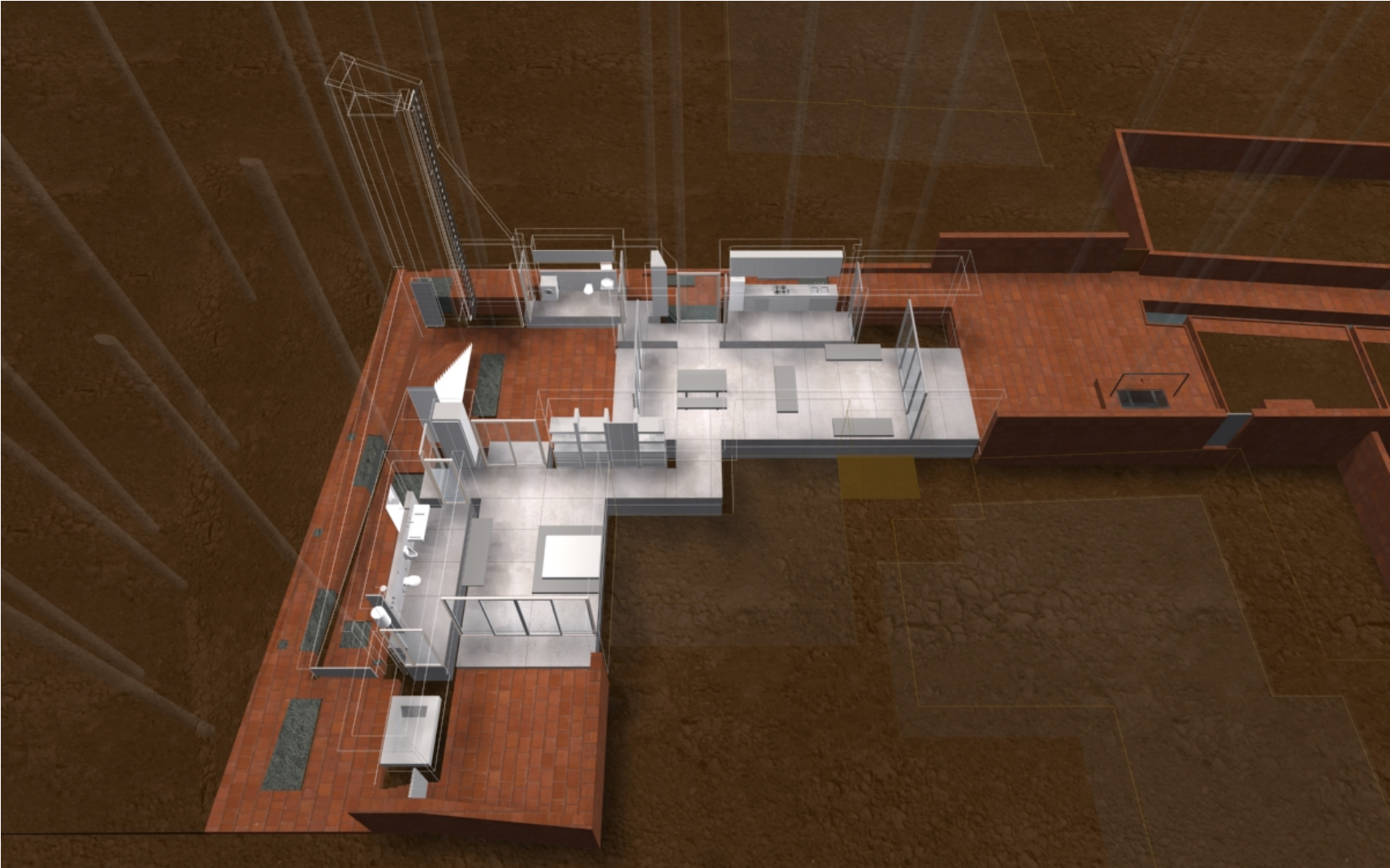


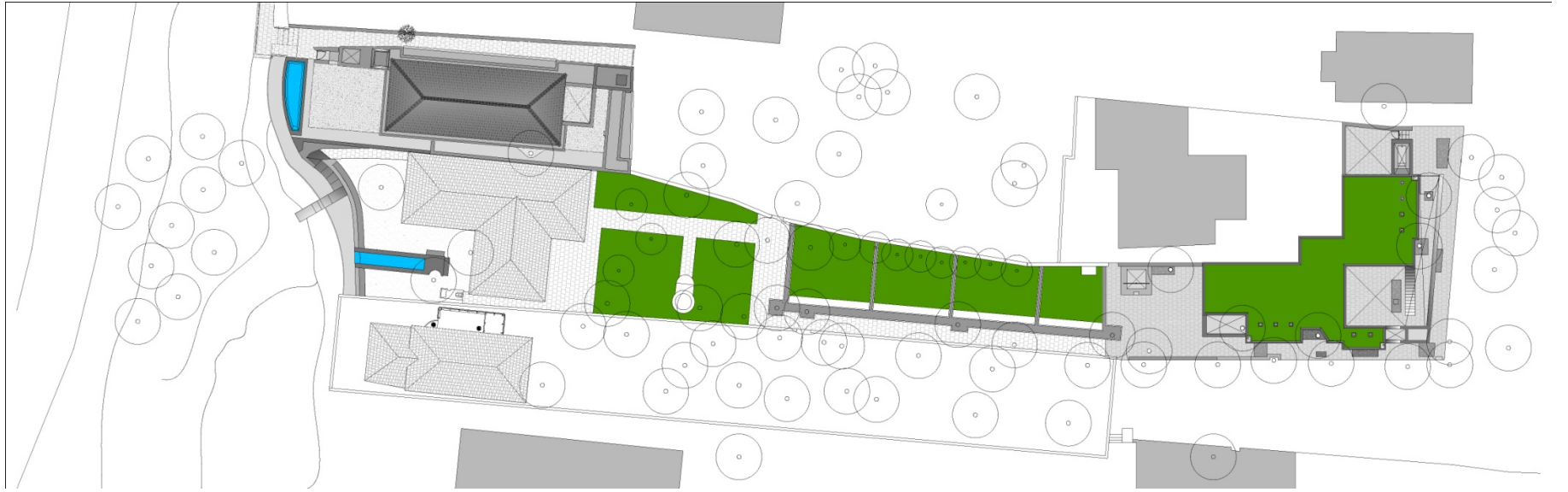






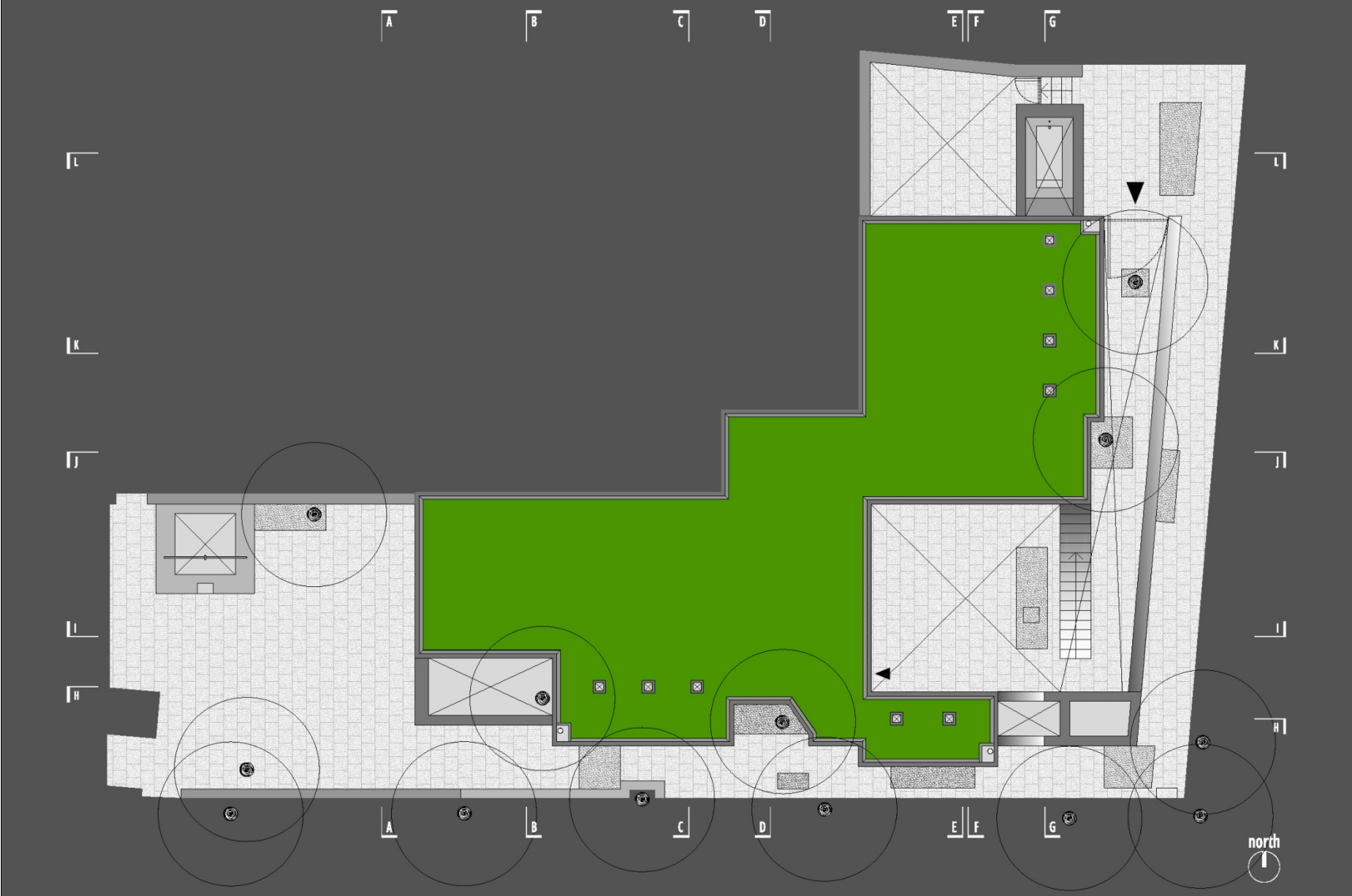






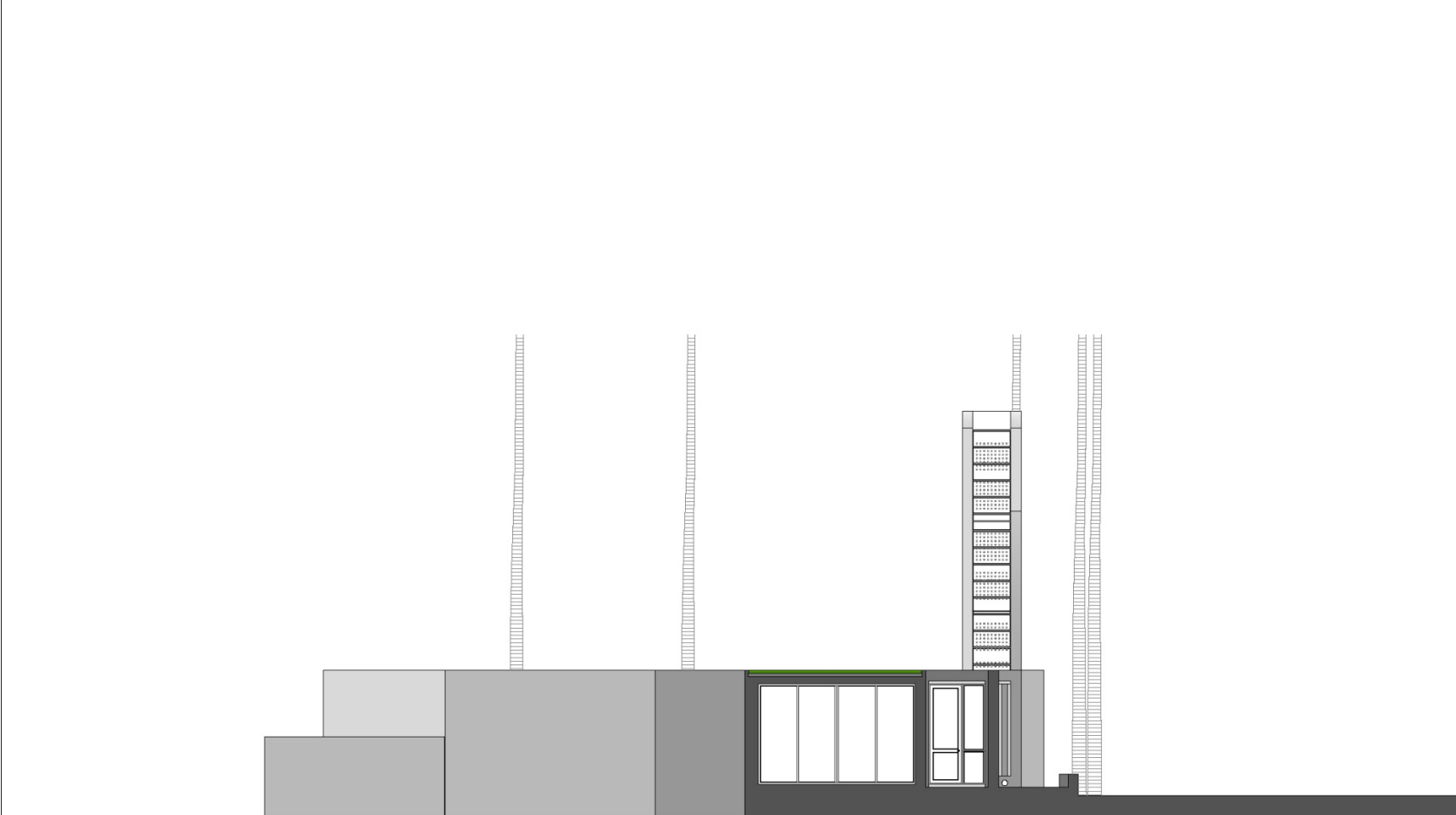


sheet no. 01.....beach house for neil d'souza at anjuna, goa.....ground floor plan.....architect.....girish dariyav karmawat

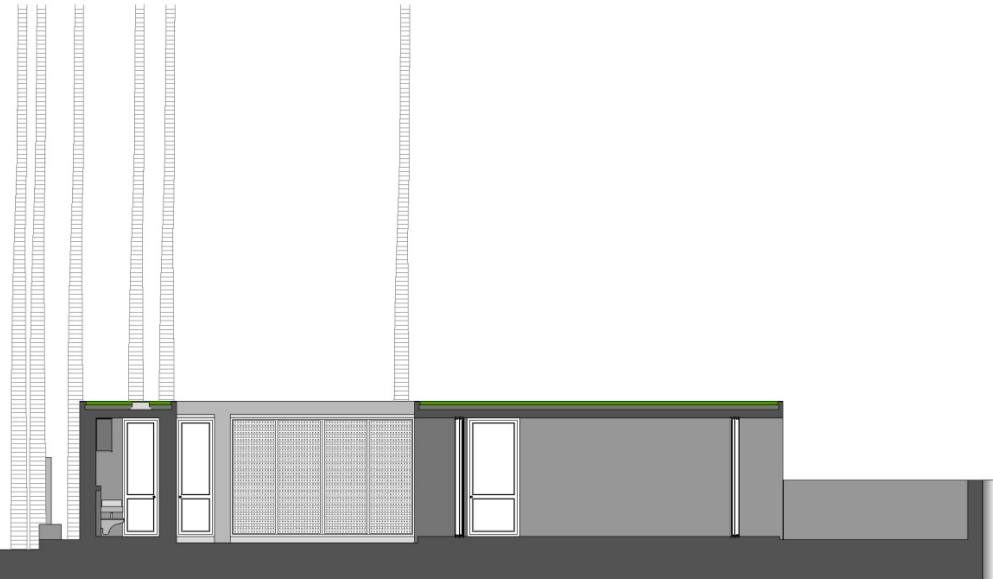


sheet no. 02.....beach house for neil d'souza at anjuna, goa.....terrace plan.....architect.....girish dariyav kamawat

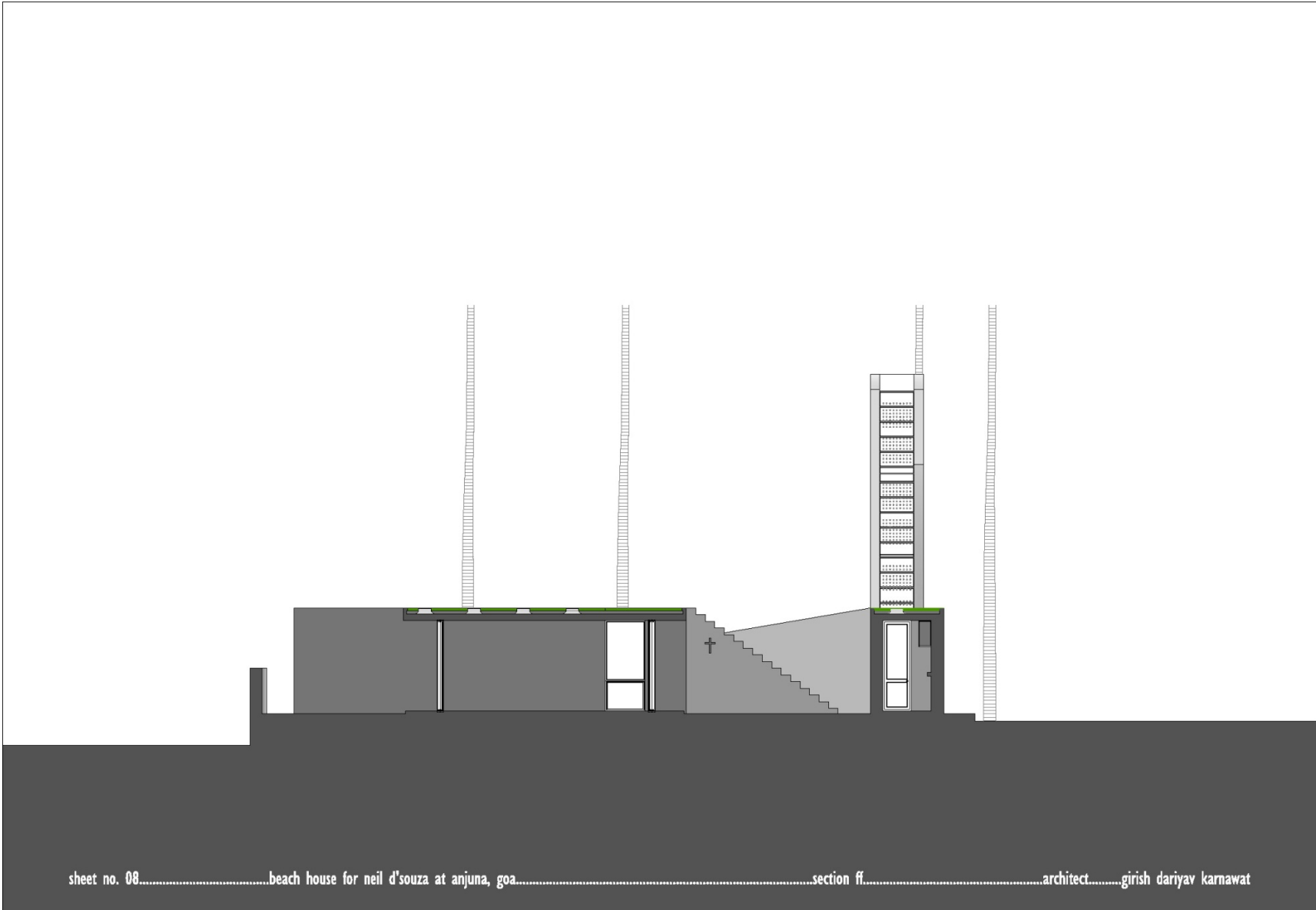




sheet no. 04.....beach house for neil d'souza at anjuna, goa.....section bb.....architect.....girish dariyav kamawat



sheet no. 07.....beach house for neil d'souza at anjuna, goa.....section ee.....architect.....girish dariyav karnawat





sheet no. 09.....beach house for neil d'souza at anjuna, goa.....section gg.....architect.....girish dariyav karnawat

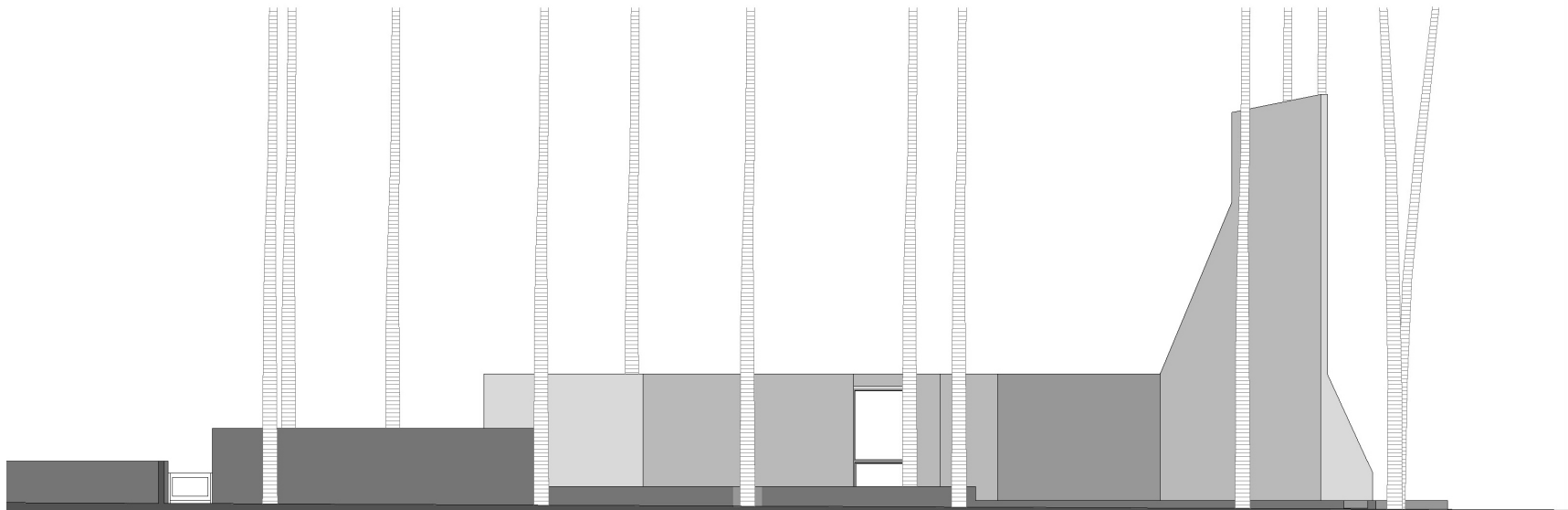


sheet no. 10.....beach house for neil d'souza at anjuna, goa.....section hh.....architect.....girish dariyav karnawat



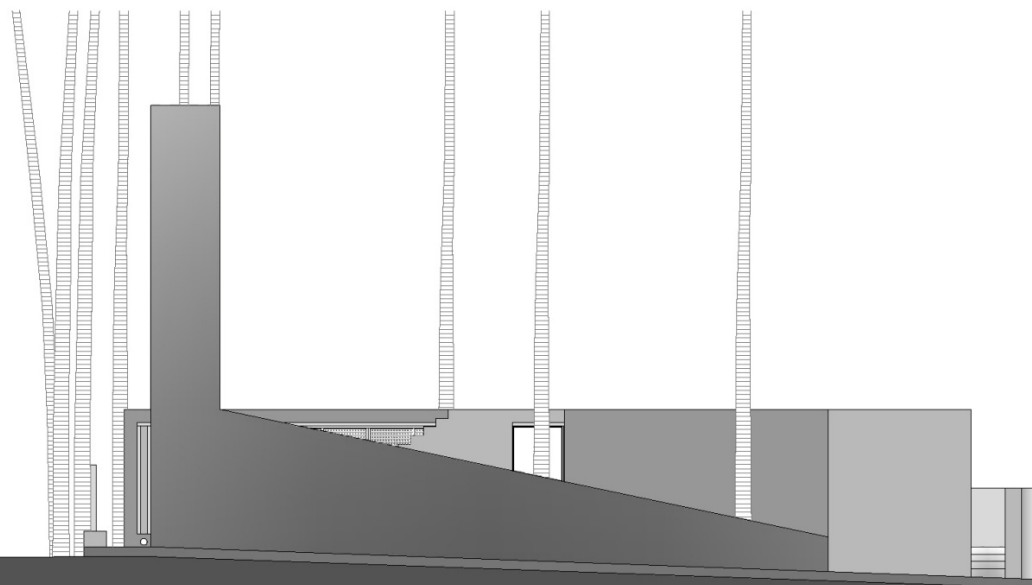


sheet no. 12.....beach house for neil d'souza at anjuna, goa.....section jj.....architect.....girish dariyav karnawat



sheet no. 15.....beach house for neil d'souza at anjuna, goa.....south elevation.....architect.....girish dariyav karnawat





sheet no. 16.....beach house for neil d'souza at anjuna, goa.....east elevation.....architect.....girish dariyav karnawat

